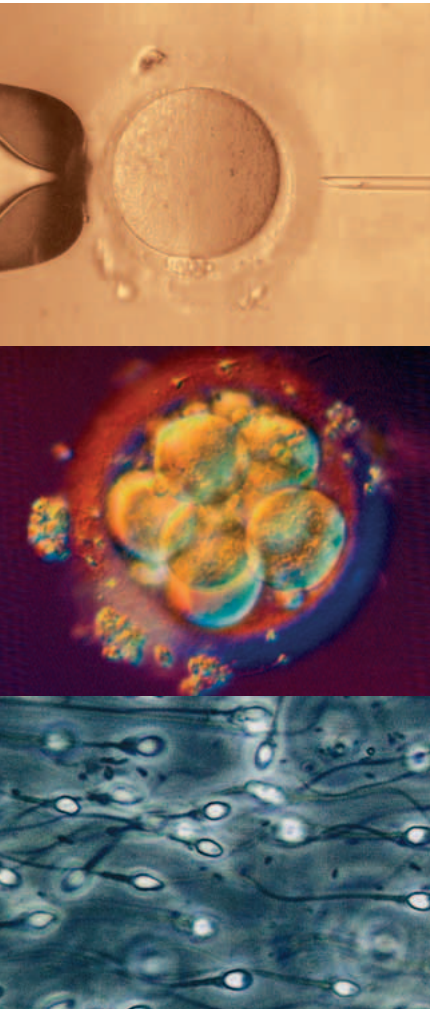


Journal für

# Reproduktionsmedizin und Endokrinologie

– Journal of Reproductive Medicine and Endocrinology –

Andrologie • Embryologie & Biologie • Endokrinologie • Ethik & Recht • Genetik  
Gynäkologie • Kontrazeption • Psychosomatik • Reproduktionsmedizin • Urologie



## D.I.R.-Annual 2010

Bühler K, Bals-Pratsch M, Blumenauer V, Dahncke W  
Felberbaum R, Fiedler K, Gnoth C, Happel L, Krüssel JS  
Kupka MS, Wendelken M  
*J. Reproduktionsmed. Endokrinol* 2011; 8 (4), 253-280

[www.kup.at/repromedizin](http://www.kup.at/repromedizin)

**Online-Datenbank mit Autoren- und Stichwortsuche**

**Offizielles Organ:** AGRBM, BRZ, DIR, DVR, DGA, DGGEF, DGRM, EFA, OEGRM, SRBM/DGE

Indexed in EMBASE/Excerpta Medica

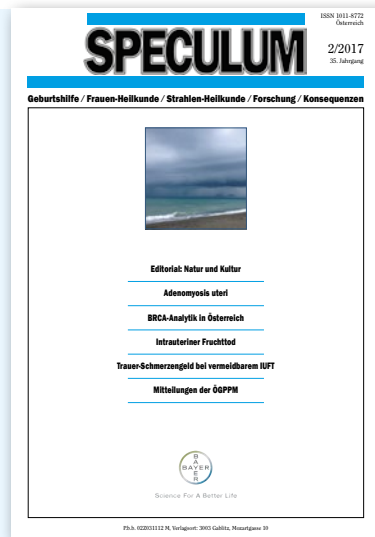
Member of the



Krause & Pachernegg GmbH, Verlag für Medizin und Wirtschaft, A-3003 Gablitz

# Mitteilungen aus der Redaktion

## Die meistgelesenen Artikel



**Speculum**

## Journal für Reproduktionsmedizin und Endokrinologie



<b>ABSTRACT</b>	<b>253</b>
<b>METHOD</b>	<b>253</b>
<b>INTRODUCTION</b>	<b>253</b>
<b>RESULTS</b>	<b>253</b>
<b>GENERAL SURVEY OF ART IN GERMANY</b>	
Outcome of ART 2010	256
Number of IVF-centres 1982–2010	256
Number of treatment cycles 1982–2010 (plausible cycles)	256
Number of treatment cycles 2010 (prospective cycles)	257
Number of cycles with ovum pick up (OPU) 2010	257
Statistics in short 2010 for IVF, ICSI and IVF/ICSI	257
D·I·R-statistics in short 2010	258
D·I·R-statistics in short 2009 (update to annual 2009)	259
Clinical pregnancies, miscarriages, ectopic pregnancies and stillbirths 2009	260
Multiple deliveries 2009	260
Deliveries as a function of the number of embryos transferred and age groups (2000–2009)	261
Deliveries as a function of the number of embryos transferred – IVF, ICSI, cryo-transfer (2000–2009)	261
Fertilisation rate per oocyte IVF and ICSI 2010	262
Distribution of indications for IVF and ICSI 2010	262
<b>OUTCOME OF IVF, ICSI AND CRYO-TRANSFER</b>	
Outcome of IVF, ICSI and cryo-transfer 2010	263
Outcome as a function of woman's age – IVF 2010	264
Outcome as a function of woman's age – ICSI 2010	264
Clin. Preg. rate as a function of the number of embryos transferred and age groups 2010	265
Clin. Preg. rate as a function of the embryo quality IVF, ICSI, IVF/ICSI 2010	265
Clin. Preg. rate as a function of the embryo quality, cryo-transfer 2010	266
Miscarriage rates as a function of woman's age and number of embryos transferred 2010	266
Clinical pregnancy-rate as a function of the stimulation protocol – IVF, ICSI 2010	267
Clinical pregnancy rate as a function of the number of oocytes inseminated/microinjected – IVF, ICSI (1997–2010)	268

## Contents



# Contents



Clinical pregnancy rate as a function of the duration of stimulation using GnRH-agonists or -antagonists – IVF, ICSI (2000–2010)	268
Number of treatment cycles per patient as a function of woman's age – IVF, ICSI, IVF/ICSI (2000–2010)	269
Duration of childlessness at the time of first treatment – IVF, ICSI, IVF/ICSI (1997–2010)	269
Average age of women and men – IVF, ICSI, IVF/ICSI (1997–2010)	270
Clinical pregnancy rate as a function of the month in which the embryo-transfer was performed IVF, ICSI (2000–2010)	270
<b>CHILDREN BORN</b>	
All children born (1997–2010)	271
Childrens birth weight (bw) and week of gestation (wg) 2009 (singletons, twins, triplets)	272
<b>OHSS AND COMPLICATIONS</b>	
Complications as a function of ovum pick up 2010	273
OHSS as a function of the stimulation protocol – IVF, ICSI, IVF/ICSI 2010	273
<b>QUALITY OF THE CENTRES OUTCOME</b>	
Percentage of centre hopping compared with clin. PR/ET between the largest 100 centres (1997–2010)	274
<b>EPILOGUE</b>	
<b>ACKNOWLEDGEMENT</b>	
<b>LIST OF CENTRES PARTICIPATING IN D-I-R</b>	

K. Bühler, M. Bals-Pratsch, V. Blumenauer, W. Dahncke, R. Felberbaum,  
K. Fiedler, C. Gnoth, L. Happel, J.-S. Krüssel, M. S. Kupka, M. Wendelken

**Abstract:** The German IVF-Registry (Deutsches IVF-Register, D-I-R) was established in 1982. Its main objective, from the beginning, was to lend transparency and openness to the newly established infertility treatment options.

By 1996 electronic data collection was implemented, allowing the online check for data completeness and plausibility as well as ensuring prospectivity.

Since 1997, data entry has to be performed electronically. From 1998, participating in the German IVF-Registry has become mandatory by decree of the German Medical Association.

By the year 2010, the registry comprised 124 centres, with all 124 submitting their data to D-I-R: 77,904 treatment cycles were reported in 2010; 75,928 datasets are plausible, and 63,422 fulfil prospectivity. 50,583 oocyte retrievals led to an IVF or ICSI treatment, and in 46,419 of these “fresh” cycles, an embryo transfer (ET) was performed. In addition to these “fresh” cycles, 17,929 embryo transfers with cryopreserved thawed pro-nucleus-stage oocytes were recorded.

In 2010, the clinical pregnancy rate for IVF is 29.5% and for ICSI 28.4%. Generally we observe that in the data-collection-year the outcome of about 40% of all reported pregnancies is unclear. One year later this figure decreases to about 12.5–15%. From 1997 to 2010, a dramatic reduction of triplets results from the 20% reduction of the number of embryos transferred. Across all years, the miscarriage rate after cryopreservation has remained significantly higher compared with fresh cycles (23.4% vs 18.8%). More than one million cycles have been collected since the registry’s establishment in 1982 and the births of 156,809 children have been reported to D-I-R since 1997. **J Reproduktionsmed Endokrinol 2011; 8 (4): 253–80.**

## ■ Method (Statistics)

Exclusively descriptive statistics were used in the yearbook. These statistics have the aim of representing a large set of data and tables clearly. Graphics and tables are primarily prepared with average values, medians, box-charts etc. to subsume the data stocks. This method is usual at the representation of extensive data to receive a reasonable summary.

## ■ Introduction

The German IVF-Registry (Deutsches IVF-Register, D-I-R) was established in 1982. When the first IVF-baby was born in Germany that year, 5 university centres for the first time decided to publish their results. The idea behind this endeavour was to lend transparency to this new infertility treatment modality which was in the centre of public dispute at that time.

Although the engagement was on a voluntary basis at first, the number of participants increased as rapidly as the number of IVF centres: from 53 centres in 1990 to 71 in 1996.

The registry was completely reorganised in 1996. Up to then all centres had reported their activities by a written summary once a year or by using a d-base

software solution (IVF-C, Medis). With RecDate, a Filemaker®-based, industry-sponsored software, electronic data collection was introduced in 1996.

Reporting cycle by cycle not only allowed for the control of plausibility of the data input but prospective data collection had become a reality. To enable prospectivity, each cycle has to be entered into the system within the first eight days of stimulation. Starting in 1997, only electronic data collection was supported. In 1998, the participation in the registry became mandatory by decree of the German Medical Association. By the year 2000 the number of centres had increased to 102; by 2010 124 were exporting their data to the registry.

By 2003, the registry had created its own data collection software, DIRpro, a SQL database. The industry-independent data collection was now an option for the centres. DIRpro is the electronic questionnaire for the registry; RecDate and especially its update RecDate advance – now SQL-based as well – fulfil all requirements concerning documentation in an IVF centre. To meet the widening scope of data collection, DLL, a special interface was developed by the registry. The DLL-interface allows the application of any other software for the data collection, provided it meets the D-I-R

criteria. DLL performs an online check for plausibility and prospectivity with direct and immediate feedback to the centre.

Since 1982, data on more than 1.1 million treatment cycles have been collected by the Deutsches IVF-Register, mostly of excellent data quality. On account of this, D-I-R has become a highly respected and excellent instrument for quality assurance in the field of reproductive medicine.

Since 1996, an annual report has been published in German; starting in 2010 we have added an English version. This year we celebrate the 15<sup>th</sup> anniversary of our yearbook: 15 years of classical statistics as well as new considerations based on statistics drawn from our huge database.

## ■ Results

For the past 15 years, the annual report has been reserved for the description of the situation in the reporting year and for general information about developments since 1982.

It is absolutely necessary to point out the importance of differentiating between “all cycles”, “plausible cycles”, and “prospectively collected cycles”.

In every graph or table the data pack is indicated respectively (p. 256). Page 257 demonstrates the development of the number of those oocyte retrievals leading to IVF or ICSI treatments from the very beginning in 1982.

Political impacts are very clearly visible: while in the year 2000 only ICSI was affected, in 2004 both IVF and ICSI took deep slumps.

The so-called “data tree” on page 258 gives a condensed overview of all recorded cycles in Germany in the year 2010. Due to the early submission deadline – August 10, 2011 – the outcome of reported pregnancies is not available in 35.2% to 46.6% of the cycles.

One year later, the updated tree (p. 259 condensed report 2009) illustrates a reduction of missing data from 12.5–15%.

The outcome of reported clinical pregnancies and data about multiple pregnancies therefore are always reported for the preceding year (p. 260, 261). The shaded background in charts and tables indicates that data from preceding years (excluding the actual year) are presented. The following gives an overview of the fate of every aspirated oocyte in the year 2010. While the mean number of transferred embryos has decreased about 20% in fresh cycles, and 13% in freeze-thawed-cycles this did not result in a reduction in the number of children born per ET or per delivery (figures for 2010 are not representative; see above). Among the female indications for an IVF treatment, tubal infertility shows the highest incidence. Reduced sperm quality – as expected – triggers most of the ICSI treatments (p. 262).

Page 263 reveals the history of treatment from oocyte-retrieval to implantation and delivery for all treatment-options. The aim is to show how successful the treatments in Germany are. In the figures on page 264 treatment results in their respective age groups for pregnancies and abortion rate are presented. Highlighted light blue in the table shows the results for patients with good prognosis (good ovarian response). On page 265 is now further specify the number of embryos transferred in the respective age groups. It shows a clear trend that has been trans-

ferred, especially in the age groups < 35 years only in exceptional cases (< 11%) more than 2 embryos in the “fresh cycles” to avoid higher grade multiple pregnancies.

Only in the frozen-thawed cycles, the transfer with more than 2 embryos in women < 35 years is slightly higher (20%) because the overall risk of multiple pregnancies in frozen-thawed cycles is pretty much lower (compare figure p. 261 below).

The figure below shows the increasing probability of success for each age group with the presence of one or more good quality embryos. A overall survey shows the next table with number of treatments in the presence of one or more good quality embryos page 266. In consideration of miscarriage, the table page 266 below shows the increase in abortions based on the number of embryos per age group divided into fresh and frozen thawed cycles.

As in previous yearbooks are on page 267 the success probabilities of each stimulation substance divided in groups of the combination with GnRH releasing hormones (agonist/antagonist) with gonadotropins (urinary/recombinant) in IVF and ICSI treatments.

The first graph on page 268 gives the clinical pregnancy rate per embryo transfer for the number of oocytes inseminated (conventional IVF) or micro-injected (ICSI).

As expected, there is a clear correlation to the clinical pregnancy rate depending on the number of inseminated or injected oocytes.

According to the German Embryo Protection Act not more than three embryos are allowed to be transferred in one cycle. So for the full chance in a fresh cycle at least 9 oocytes should be available. If more, all oocytes will be treated and used in future cycles. Thereby, cumulative pregnancy rates will increase.

The second graph on this page gives the clinical pregnancy rate depending on the days of ovarian stimulation in GnRH-agonist and GnRH-antagonist protocols for the last decade.

The highest clinical pregnancy rate by embryo transfer will be achieved with stimulation of 8–12 days.

This is not astonishing as in cycles with a very short stimulation (accelerated follicular maturation) or long stimulation (delayed follicular maturation) the underlying ovarian pathology reduces oocyte quality and clinical pregnancy rate. It is very interesting, that obviously there is a significant higher clinical pregnancy rate per embryo transfer after stimulation in GnRH-agonist than in GnRH-antagonist protocols. But this result may be biased by patient selection in preferring antagonist stimulations preferentially in patients with expected low response.

The first graph on page 269 gives the number of fresh cycles for the different age groups. With age there is a significant increase in the average number of fresh treatments per woman. The age was recorded at the time of the first cycle. This may explain the drop after 38 because in Germany the reimbursement of treatment costs stops with the age of 40 for the woman. So often a second or third fresh attempt was not possible.

The second graph on page 269 shows the duration of involuntary childlessness before the first IVF cycle. From 1997 onwards there was a significant decrease towards earlier treatment. In the last years we have an average of 3–4 years involuntary childlessness before entering an IVF program. This accounts for the severe subfertility of couples undergoing IVF in Germany with only a very low chance of spontaneous conception left.

The first graph on page 270 shows the mean age of men and women starting with IVF. There is an increasing age over the last years with a significant step after 2004 with changes in the reimbursement. In the mean time the mean age of women treated reached nearly 35 years of age.

The second graph gives the clinical pregnancy rate per embryo transfer for the calendar months of embryo transfers in the last 10 years. There seems to be no significant differences in between the different months. So speculative effects of seasonal differences, holiday-months



or other can not be concluded from the results of our huge database.

The two tables on page 271 demonstrate the number of singletons and multiples of all born children in a period of 14 years.

Numbers given in brackets indicate the amount of live born children.

Prospective and non-prospective cycles had been analysed. Prospective cycles are entered in the computer system with a maximum of 8 days after the first day of controlled ovarian hyperstimulation.

The four graphs and three tables on page 272 demonstrate birth weight depending on gestational week for singletons and multiples.

The graph and tables on page 273 focus on side effects and severe complications during IVF/ICSI procedure. The total rate of complication is low (0.7%).

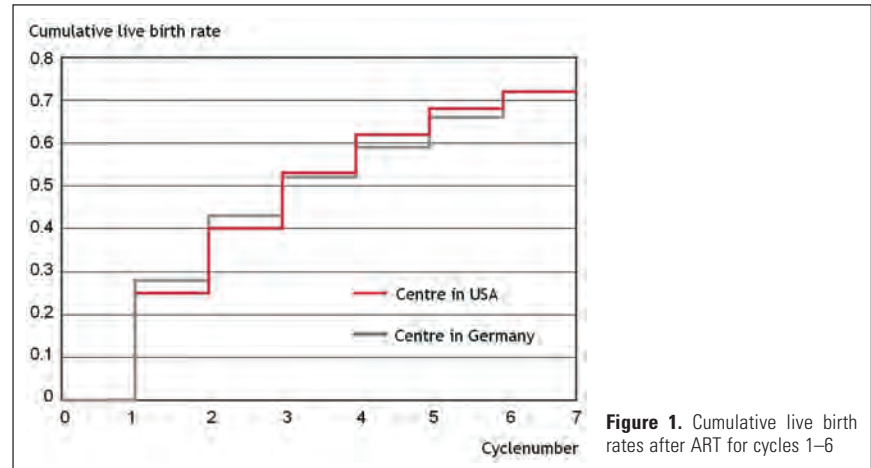
One severe iatrogenic complication is the ovarian hyperstimulation syndrome. The table demonstrates the rate of OHSS depending on different pharmaceutical protocols.

Only severe cases are documented.

## ■ Epilogue – International Cross Comparison of ART-Results

Cumulative ART success rates (conventional IVF, IVF/ICSI and cryocycles) are much better indicators of quality and success in IVF-programs and allow comparisons between different centres to figure out possible advantages or disadvantages of national IVF policies (restrictions and liberations) and individual centre's strategies. Cumulative success rates are also important figures for basic economic and political considerations of ART reimbursement.

The most national indices have not published cumulative success rates so far, because of the inhomogeneous structure of data and because of anonymity of participating centres. Recently, cumulative live birth rates after ART were published by a single centre in the USA including all ART cycles [1]. To compare ART results we exemplarily calculated cumula-



**Figure 1.** Cumulative live birth rates after ART for cycles 1–6

tive live birth rates of a single centre in Germany [2] according to the assumptions of Kaplan-Meier.

We compared 14,248 ART cycles in 6164 patients in the US centre (2000–2004) with 8,848 Cycles in 3,394 patients in the German centre (1998–2007). There was a maximum of 10 cycles in one individual women in the US centre and 22 cycles in the German centre. 35% of the ART cycles in the US centre were ICSI versus 70% in Germany. According to the strict interpretation of the German Embryo Protection Act the culture of more than three pronuclears was prohibited because only as many pronuclears as were planned to be transferred in one cycle were allowed to be cultured. Pronuclears that were not intended for implantation in one cycle had to be discarded or to be cryopreserved. As a consequence a prolonged culture with a selection of the best embryos and embryo cryopreservation was not possible. In cycles 1–6 3,126 live births were recorded in the US centre versus 1,705 live births in the German Centre (Fig. 1). There were 27,3% twin births in the US centre and 19,7% in den German centre. In the US centre there were 8 quadruplets, no in Germany.

After 6 treatment cycles the cumulative live birth rate reached 72% in both centres. Stratifying the results for the patient's age we see comparable results up to a patient's age of 40 years with 86% in patients < 35 years of age in both centres.

Obviously, complete the different treatment strategies and completely different national regulations led to the same re-

sult: an overall cumulative live birth rate of 72% after 6 treatment cycles.

Very recently another study of a single centre in Spain was published on cumulative live birth rates per total number of embryos transferred [3]. Comparing their results to the German centre we again find comparable cumulative live birth rates over the total number of embryo transferred. So again, different treatment strategies, different national regulations lead to the same cumulative ART success rates which reach natural fertility rates but can not exceed them.

## References:

1. Malizia BA, Hacker MR, Penzias AS. Cumulative Live-Birth Rates after In Vitro Fertilization. *N Engl J Med* 2009; 360: 236–43.
2. Gnath C, Maxrath B, Skonieczny T et al. Final ART success rates: a 10 years survey. *Hum Reprod* 2011; 26: 2239–46.
3. Garrido N, Bellver J, Remohi J et al. Cumulative live-birth rates per total number of embryos needed to reach newborn in consecutive in vitro fertilization (IVF) cycles: a new approach to measuring the likelihood of IVF success. *Fertil Steril* 2011; 96: 40–6.

## ■ Acknowledgement

Our sincere gratitude goes out to all the participating centres. For the past 15 years, the teams in those centres – the physicians, embryologists, assistant medical technicians as well as all of the other medical staff – have diligently performed the data collection. Their effort and dedication are the foundation for D·I·R's enormous success. Our gratitude also goes out to the staff at the Medical Association of Schleswig-Holstein for 15 years of data evaluation. We would also like to thank all of those assisting us in publishing the English version of the yearbook again.

## Outcome of ART 2010

centres for IVF-, ICSI-, GIFT- und cryo-transfer treatments

<b>Participating IVF centres</b>	n = 124
<b>Data received until deadline (10.08.2011)</b>	n = 124
<b>Documented treatment cycles</b>	n = 77,904 (100.00 %)
<b>Plausibel</b>	n = 75,928 (97.46 %)
<b>Prospective (all cycles)</b>	n = 63,422 (83.53 %)
<b>Prospective (IVF, ICSI, IVF/ICSI)</b>	n = 41,102 (81.26 %)
<b>Number of treated women*</b>	n = 47.159
<b>Treatment cycles per women (mean)</b>	1,65

\*) Base quantity: all women with specified age; implausible treatment cycles are counted also.

## Number of IVF centres 1982 - 2010

for IVF-, ICSI-, GIFT- and cryo-transfer treatments

	1982	1986	1990	1994	1998	1999	2000	2001	2002	2003	2004	2005	2006	2007	2008	2009	2010
IVF	5	28	53	66	86	92	100	107	112	114	118	117	120	118	117	119	121
ICSI	0	0	0	32	85	92	98	108	112	116	120	117	120	118	120	119	124
Cryo	0	0	0	19	63	75	77	95	97	101	112	109	109	112	112	117	120
GIFT	0	14	36	23	4	8	7	5	6	8	2	1	0	1	1	1	2
Total*					86	92	102	108	112	116	120	117	121	118	120	121	124

\*) for the years before 1996 (implementation of electronic data processing in DIR) no data is available

## Number of treatment cycles 1982 - 2010 (plausible cycles)

IVF, ICSI, IVF/ICSI, GIFT, cryo-transfer

	1982	1986	1990	1994	1998	1999	2000	2001	2002	2003	2004	2005	2006	2007	2008	2009	2010
IVF	742	3,806	7,343	16,175	16,763	21,880	28,945	28,506	23,936	28,058	11,848	11,098	11,082	11,362	11,264	11,585	11,278
ICSI				5,856	23,578	21,244	15,752	24,897	37,692	51,389	25,339	25,532	28,015	31,452	34,333	36,712	38,320
IVF/ICS					424	962	790	695	678	987	446	590	672	798	834	873	985
Cryo				499	4,616	7,661	9,457	12,195	14,923	14,265	16,883	14,471	14,926	16,566	17,646	17,866	18,939
GIFT		380	985	829	11	41	25	19	13	22	4	2	0	1	0	2	2
none *					67	6,600	6,562	7,507	9,802	11,133	4,928	4,539	4,600	5,137	5,825	5,946	6,404
Total	742	4,201	8,653	23,684	45,459	58,388	61,531	73,819	87,044	105,854	59,448	56,232	59,295	65,316	69,902	72,984	75,928

Since 1999 all started treatment cycles are documented.

\*) no treatment: aborted treatments before oocyte culture



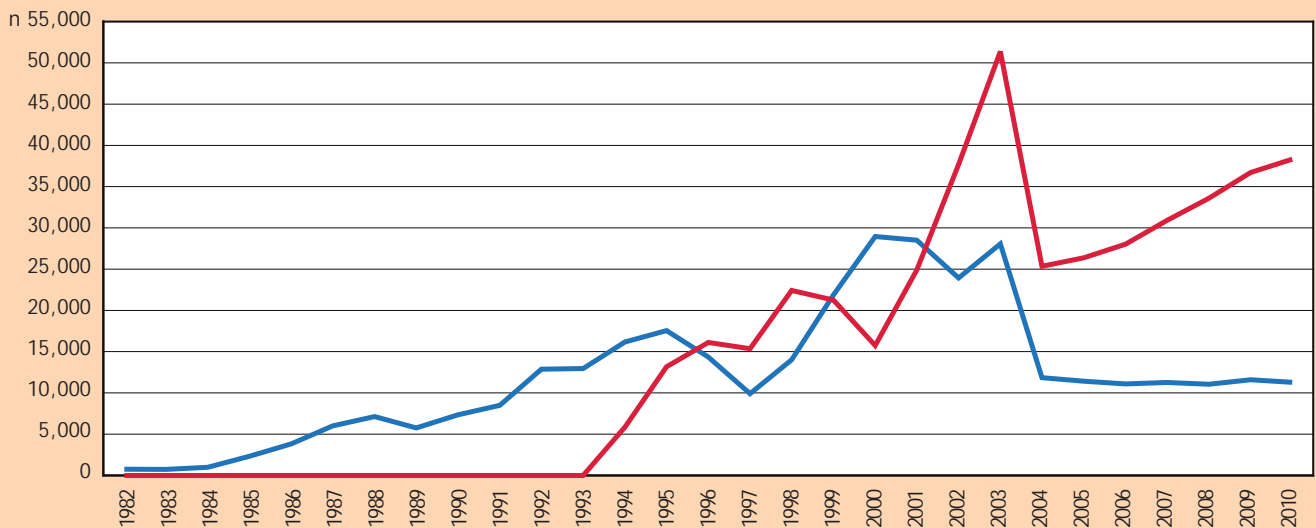
## Number of treatment cycles 2010 (prospective cycles)

IVF, ICSI, IVF/ICSI, cryo-transfer

	IVF	ICSI	IVF/ICSI	Cryo-transfer	No treatment	Total
n	9,143	31,148	811	16,854	5,466	63,422
%	14.42	49.11	1.28	26.57	8.62	100.00

## Number of cycles with ovum pick up (OPU) 2010

IVF, ICSI\*



	1982	1986	1990	1994	1998	1999	2000	2001	2002	2003	2004	2005	2006	2007	2008	2009	2010
IVF	742	3,806	7,343	16,175	14,024	21,880	28,945	28,506	23,936	28,058	11,848	11,410	11,082	11,362	11,048	11,585	11,278
ICSI				5,856	22,420	21,244	15,752	24,897	37,692	51,389	25,339	26,370	28,015	31,452	33,591	36,712	38,320
Total*	742	3,806	7,343	22,031	37,933	44,086	45,487	54,098	62,306	80,434	37,633	38,382	39,769	43,612	45,461	49,170	50,583

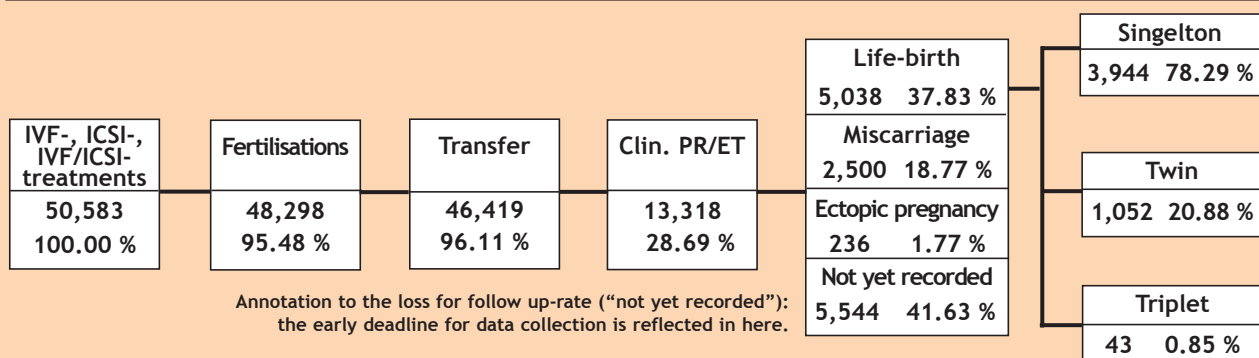
\*) OPU with IVF- oder ICSI-oozyte culture

\*) The value for IVF/ICSI is enclosed in "total", for instance in 2010: 985 OPU.

Prospectively and retrospectively collected data were used.

## Statistics in short 2010 for IVF, ICSI and IVF/ICSI

German IVF Registry, status: 10.08.2011

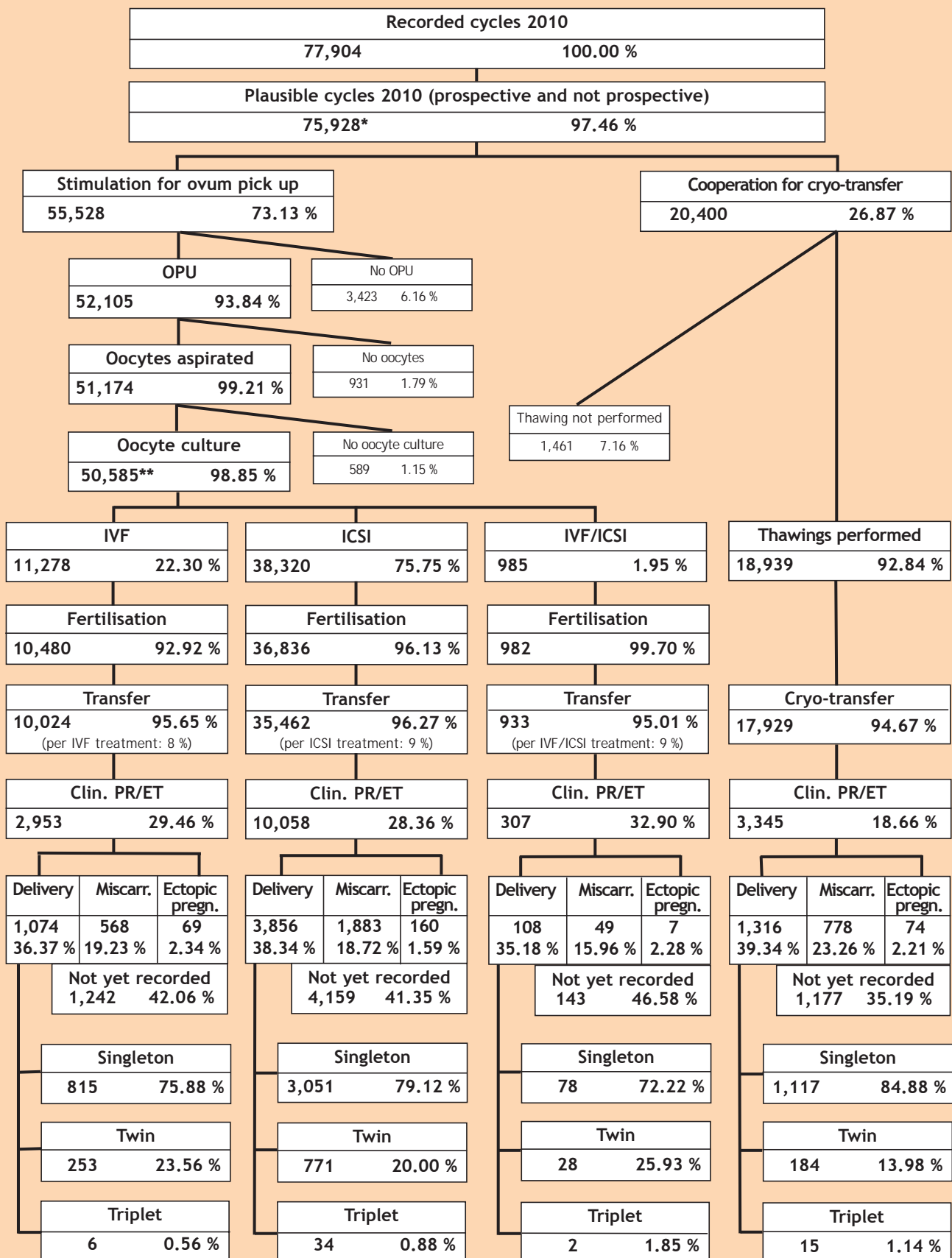


Prospectively and retrospectively collected data were used.

# D.I.R. statistics in short 2010

## German IVF Registry

status: 10.08.2011



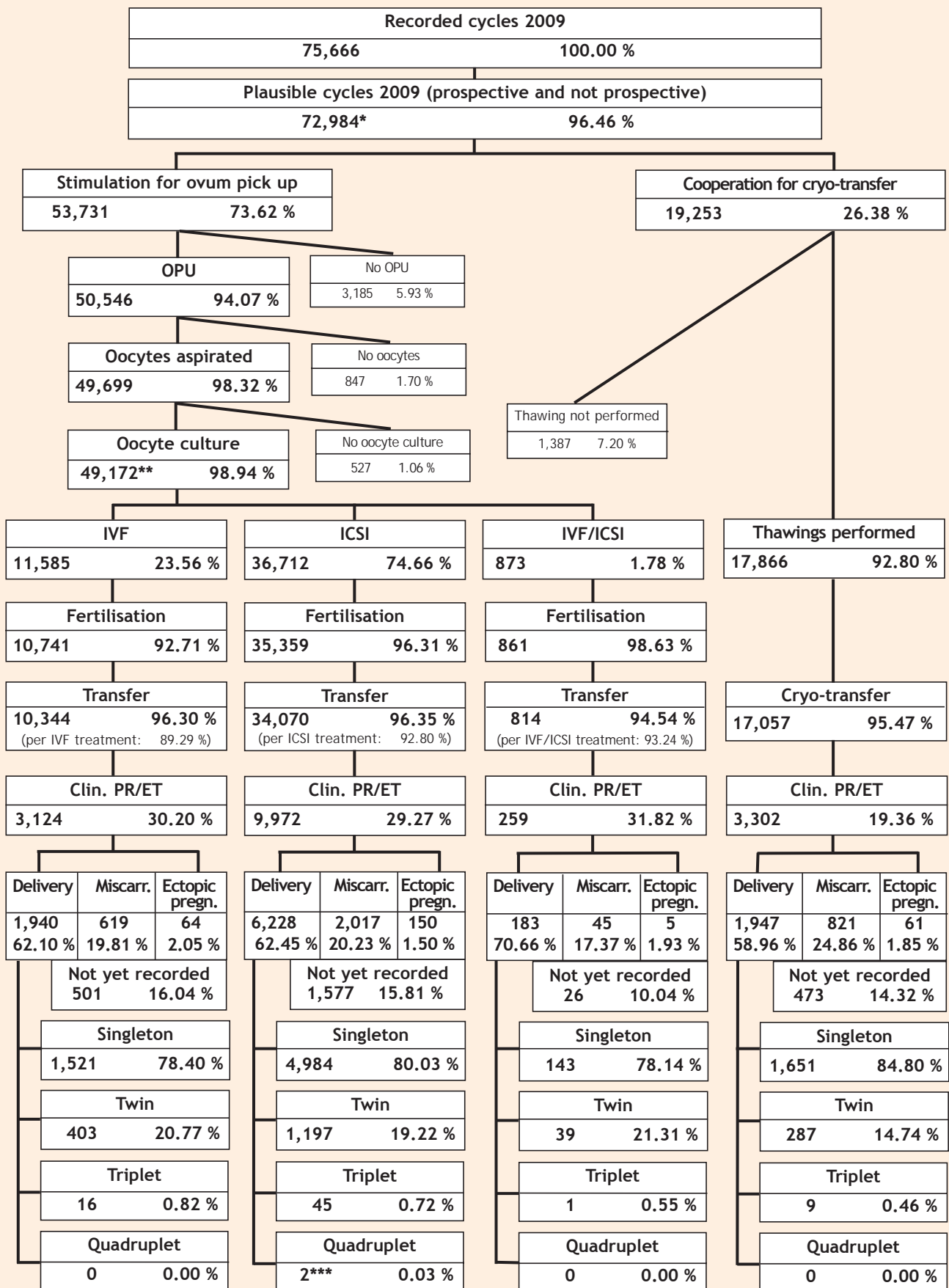
\*) 6,404 cases without continued treatment are enclosed

\*\*) 2 GIFT-cases are enclosed

# D.I.R. statistics in short 2009 (update to annual 2009)

## German IVF Registry

status: 10.08.2011



\*) 5,825 cases without continued treatment are enclosed.  
 \*\*) 2 GIFT-cases are enclosed

\*\*\*) Quadruplet: woman 31 years, man 41 years, 4th treatment cycle, 3 embryos transferred  
 Quadruplet: woman 40 years, man 34 years, 1st treatment cycle, 2 embryos transferred

2009	IVF		ICSI		IVF/ICSI		Cryo-transfer	
	n	%	n	%	n	%	n	%
Treatment cycles	11,585		36,712		873		17,866	
Clin. pregnancies	3,124	100.00	9,972	100.00	259	100.00	3,302	100.00
n. a.	501	16.04	1,577	15.81	26	10.04	473	14.32
Deliveries	1,940	62.10	6,228	62.45	183	70.66	1,947	58.96
Miscarriages	619	19.81	2,017	20.23	45	17.37	821	24.86
Induced abortions and fetal reductions*	29 (39)	0.93	121 (140)	1.21	2 (2)	0.77	32 (36)	0.97
Ectopic pregnancies	64	2.05	150	1.50	5	1.93	61	1.85
Children	2,478		7,829		235		2,321	
Dead newborns **	23	0.93	51	0.65	1	0.43	13	0.56
Malformations	32	1.29	70	0.89	3	1.28	28	1.21
Baby-take-home rate ***		16.97		17.15		21.29		10.83
		17.77 <sup>1</sup>		17.97 <sup>1</sup>		22.03 <sup>1</sup>		11.14 <sup>1</sup>
		19.78 <sup>2</sup>		19.98 <sup>2</sup>		23.64 <sup>2</sup>		12.43 <sup>2</sup>

Prospectively and retrospectively collected data were used.

\*) Number of cycles, in which an induced abortion/fetal reduction was documented. Detailed data cannot be given. Number of embryos are given in brackets.

\*\*) Number of dead newborns corresponding to the number of children

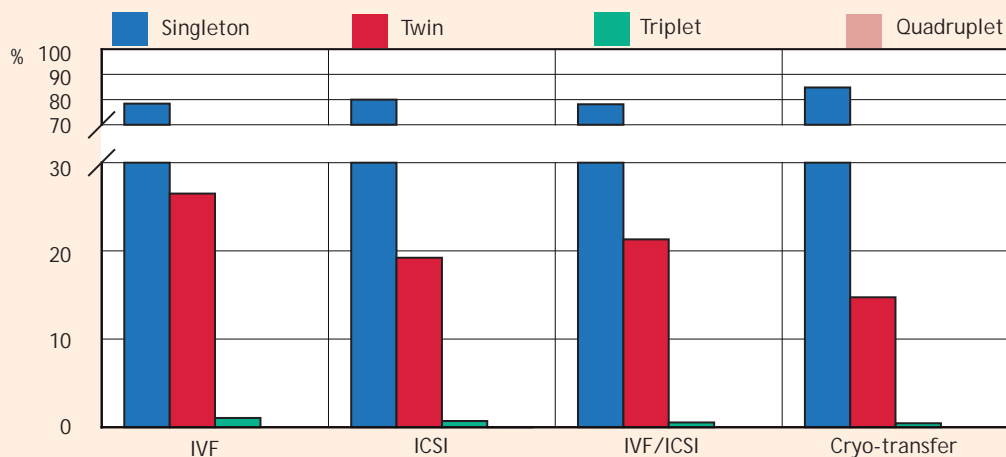
\*\*\*) Number of deliveries in correlation to the number of treated cycles given in percent

1) Total number of treatment cycles reduced for those cycles with unknown pregnancy outcome

2) For cycles with unknown pregnancy outcome the probable rate for deliveries was calculated (delivery per pregnancy) and added to the reported number of deliveries

Delivery rate/transfer for patients with 2 embryos transferred and at least 2 PPN stages in abundance: IVF 24,33 %, ICSI 23,98 %, IVF/ICSI 27,39 %

## Multiple deliveries 2009



Prospectively and retrospectively collected data were used.

	IVF			ICSI			IVF/ICSI			Cryo-transfer		
	n	%	%	n	%	%	n	%	%	n	%	%
CLin. PR/ET	3,124	100.00		9,972	100.00		259	100.00		3,302	100.00	
Deliveries	1,940	62.10	100.00	6,228	65.45	100.00	183	70.66	100.00	1,947	58.96	100.00
Singleton	1,521	48.69	78.40	4,984	49.98	80.02	143	55.21	78.14	1,651	50.00	84.80
Twin	403	12.90	26.50	1,197	12.00	19.22	39	15.06	21.31	287	8.69	14.74
Triplet	16	0.51	1.05	45	0.45	0.72	1	0.39	0.55	9	0.27	0.46
Quadruplet	0	-	-	2	0.02	0.03	0	-	-	0	-	-
n. a.	501	16.04		1,577	15.81		26			473	14.32	
Miscarriages	619	19.81		2,017	20.22		45			821	24.86	
Ectopic Pregn.	64	2.05		150	1.50		5			61	1.85	

## Deliveries as a function of the number of embryos transferred and age groups 2000 - 2009 - IVF, ICSI, IVF/ICSI, cryo-transfer

Age of woman		Singleton		Twin		Triplet		Quadruplet		Total
		n	%	n	%	n	%	n	%	n
Up to 24 years	1 embryo	110	100.00	0	-	0	-	0	-	110
	2 embryos	1,449	77.45	415	22.18	7	0.37	0	-	1,871
	3 embryos	264	68.75	99	25.78	19	4.95	2	0.52	384
	Total	1,823	77.08	514	21.73	26	1.10	2	0.08	2,365
25 - 29 years	1 embryo	918	98.39	15	1.61	0	-	0	-	933
	2 embryos	12,337	76.05	3,819	23.54	64	0.39	2	0.01	16,222
	3 embryos	2,420	69.04	889	25.36	193	5.51	3	0.09	3,505
	Total	15,675	75.87	4,723	22.86	257	1.24	5	0.02	20,660
30 - 34 years	1 embryo	2,099	97.99	43	2.01	0	-	0	-	2,142
	2 embryos	24,411	78.01	6,762	21.61	119	0.38	1	< 0,01	31,293
	3 embryos	6,652	70.86	2,354	25.08	375	3.99	6	0.06	9,387
	Total	33,162	77.44	9,159	21.39	494	1.15	7	0.02	42,822
35 - 39 years	1 embryo	2,198	98.21	40	1.79	0	-	0	-	2,238
	2 embryos	17,149	83.83	3,257	15.92	51	0.25	1	< 0,01	20,458
	3 embryos	8,722	76.74	2,400	21.12	242	2.13	2	0.02	11,366
	Total	28,069	82.41	5,697	16.73	293	0.86	3	0.01	34,062
40 and older	1 embryo	358	99.17	3	0.83	0	-	0	-	361
	2 embryos	1,679	92.05	142	7.79	2	0.11	1	0.05	1,824
	3 embryos	1,859	87.11	266	12.46	9	0.42	0	-	2,134
	Total	3,896	90.21	411	9.52	11	0.25	1	0.02	4,319

Total number of deliveries 2000 - 2009: 104,228

Prospectively and retrospectively collected data were used.

## Deliveries as a function of the number of embryos transferred 2000 - 2009 - IVF, ICSI, cryo-transfer

IVF	Singleton		Twin		Triplet		Quadruplet		Total
	n	%	n	%	n	%	n	%	n
1 embryo	1,568	98.49	24	1.51	0	-	0	-	1,592
2 embryos	14,988	76.72	4,475	22.91	73	0.37	1	0.01	19,537
3 embryos	5,333	70.81	1,856	24.64	336	4.46	6	0.08	7,531
Total	21,889	76.37	6,355	22.17	409	1.43	7	0.02	28,660

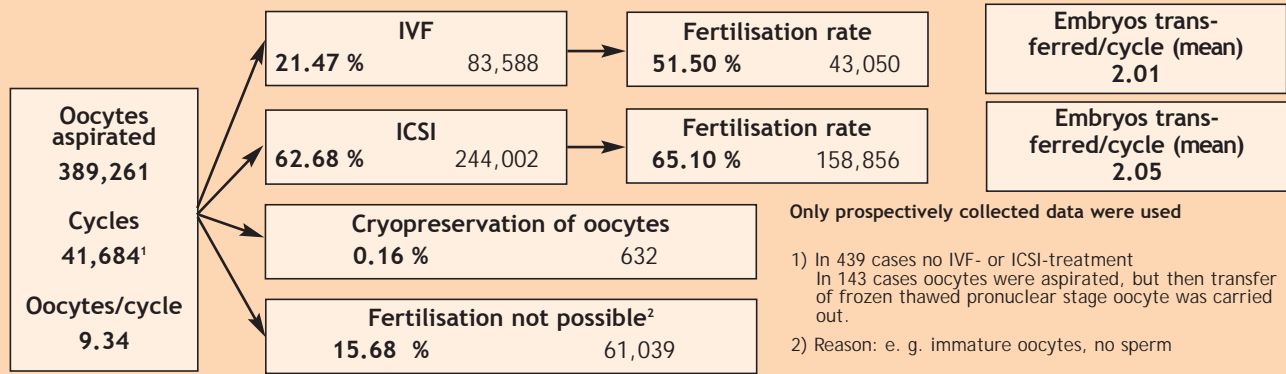
ICSI	Singleton		Twin		Triplet		Quadruplet		Total
	n	%	n	%	n	%	n	%	n
1 embryo	2,724	98.55	40	1.45	0	-	0	-	2,764
2 embryos	32,442	79.31	8,324	20.35	137	0.33	3	0.01	40,906
3 embryos	10,310	74.53	3,107	22.46	411	2.97	6	0.04	13,834
Total	45,476	79.08	11,471	19.95	548	0.95	9	0.02	57,504

Cryo-transfer	Singleton		Twin		Triplet		Quadruplet		Total
	n	%	n	%	n	%	n	%	n
1 embryo	1,336	97.45	35	2.55	0	-	0	-	1,371
2 embryos	8,712	86.47	1,335	13.25	28	0.28	0	-	10,075
3 embryos	4,048	79.22	977	19.12	84	1.64	1	0.02	5,110
Total	14,096	85.14	2,347	14.18	112	0.68	1	0.01	16,556

Total number of deliveries 2000 - 2009 IVF, ICSI, cryo-transfer: 102,720

Prospectively and retrospectively collected data were used.

## Fertilisation rate per oocyte IVF and ICSI 2010



Embryos transferred/cycle (mean\*) and children IVF, ICSI 1997 - 2010 (prospective and non-prospective data)

		1997	1998	1999	2000	2001	2002	2003	2004	2005	2006	2007	2008	2009	2010
<b>IVF</b>	Embryos transf.	2.49	2.44	2.36	2.29	2.25	2.19	2.17	2.15	2.11	2.08	2.06	2.06	2.03	2.01
	Children/transfer	0.21	0.22	0.23	0.23	0.24	0.22	0.23	0.23	0.24	0.25	0.25	0.24	0.23	0.13
	Children/delivery	1.31	1.30	1.30	1.28	1.27	1.26	1.26	1.25	1.23	1.23	1.24	1.24	1.22	1.25
<b>ICSI</b>	Embryos transf.	2.56	2.49	2.44	2.39	2.30	2.21	2.17	2.15	2.11	2.09	2.08	2.08	2.06	2.05
	Children/transfer	0.22	0.22	0.22	0.23	0.24	0.22	0.23	0.23	0.24	0.24	0.24	0.23	0.22	0.13
	Children/delivery	1.29	1.29	1.25	1.26	1.23	1.23	1.23	1.22	1.22	1.20	1.21	1.22	1.21	1.22
<b>Cryo-trans-fer</b>	Embryos transf.	2.34	2.33	2.31	2.25	2.20	2.14	2.12	2.14	2.10	2.10	2.07	2.07	2.05	2.04
	Children/transfer	0.10	0.12	0.12	0.12	0.12	0.12	0.12	0.12	0.14	0.14	0.14	0.14	0.13	0.09
	Children/delivery	1.14	1.18	1.17	1.16	1.16	1.16	1.16	1.17	1.16	1.16	1.16	1.15	1.16	1.16

## Distribution of indications for IVF and ICSI 2010

**I  
V  
F**

Female factor	Male factor	Normal	%	Reduced semen quality	%	Other**	%	Total	%
Normal	Normal	1,028	11.24	699	7.65	428	4.68	2,155	23.57
Tubal infertility	Normal	1,493	16.33	612	6.69	493	5.39	2,598	28.42
Endometriosis	Normal	402	4.40	252	2.76	194	2.12	848	9.27
Hyperandrogenism	Normal	169	1.85	126	1.38	91	1.00	386	4.22
Ovulatory dysfunction	Normal	329	3.60	201	2.20	114	1.25	644	7.04
Psychological impact	Normal	2	0.02	1	0.01	3	0.03	6	0.07
Other*	Normal	499	5.46	553	6.05	786	8.60	1,838	20.10
n. a.	Normal	17	0.19	8	0.09	643	7.03	668	7.31
<b>Total</b>		<b>3,939</b>	<b>43.08</b>	<b>2,452</b>	<b>26.82</b>	<b>2,752</b>	<b>30.10</b>	<b>9,143</b>	<b>100.00</b>

**I  
C  
S  
I**

Female factor	Male factor	Normal	%	Red. semen quality	%	Azoospermia	%	Other**	%	Total	%
Normal	Normal	600	1.93	9,986	32.06	753	2.42	1,893	6.08	13,232	42.48
Tubal infertility	Normal	466	1.50	1,790	5.75	32	0.10	428	1.37	2,716	8.72
Endometriosis	Normal	204	0.65	1,249	4.01	53	0.17	270	0.87	1,776	5.70
Hyperandrogenism	Normal	96	0.31	1,141	3.66	48	0.15	192	0.62	1,477	4.74
Ovulatory dysfunction	Normal	128	0.41	1,576	5.06	75	0.24	291	0.93	2,070	6.65
Psychological impact	Normal	4	0.01	17	0.05	0	-	10	0.03	31	0.10
Other*	Normal	385	1.24	4,438	14.25	169	0.54	2,186	7.02	7,178	23.04
n. a.	Normal	6	0.02	87	0.28	30	0.10	2,545	8.17	2,668	8.57
<b>Total</b>		<b>1,889</b>	<b>6.06</b>	<b>20,284</b>	<b>65.12</b>	<b>1,160</b>	<b>3.72</b>	<b>7,815</b>	<b>25.09</b>	<b>31,148</b>	<b>100.00</b>

\* ) Infertility factors "sperm antibodies" and "cervical factor" are enclosed

\*\* ) Infertility factor "impaired sperm function" and "impaired sperm-mucus-interaction" are enclosed

Only prospectively collected data were used



# Outcome of IVF, ICSI and cryo-transfer 2010

prospective cycles

## IVF 2010

	n	%	Fertilis. %	Embryo present %	Transfer %	Clin. preg. %
IVF	9,143	100.00				
Successful fertilisation*	8,523	93.22	100.00			
At least one embryo present	8,144	89.07	95.55	100.00		
Performed ET	8,141	89.04	95.52	99.96	100.00	
Clin. pregnancy	2,440	26.69	28.63	29.96	<b>29.97</b>	100.00
Delivery	902					36.97
Miscarriage	456					18.69
Ectopic pregnancy	51					2.09
n. a.	1,022					41.89

## ICSI 2010

	n	%	Fertilis. %	Embryo present %	Transfer %	Clin. preg. %
ICSI	31,148	100.00				
Successful fertilisation*	30,047	96.47	100.00			
At least one embryo present	28,906	92.80	96.20	100.00		
Performed ET	28,893	92.76	96.16	99.96	100.00	
Clin. pregnancy	8,403	26.98	27.97	29.07	<b>29.08</b>	100.00
Delivery	3,321					39.52
Miscarriage	1,570					18.68
Ectopic pregnancy	138					1.64
n. a.	3,374					40.15

## ICSI 2010 - sperm retrieval by TESE or cryo-TESE

	n	%	Fertilis. %	Embryo present %	Transfer %	Clin. preg. %
ICSI	1,931	100.00				
Successful fertilisation*	1,807	93.58	100.00			
At least one embryo present	1,735	89.85	96.02	100.00		
Performed ET	1,733	89.75	95.90	99.88	100.00	
Clin. pregnancy	459	23.77	25.40	26.46	<b>26.49</b>	100.00
Delivery	184					40.09
Miscarriage	82					17.86
Ectopic pregnancy	8					1.74
n. a.	185					40.31

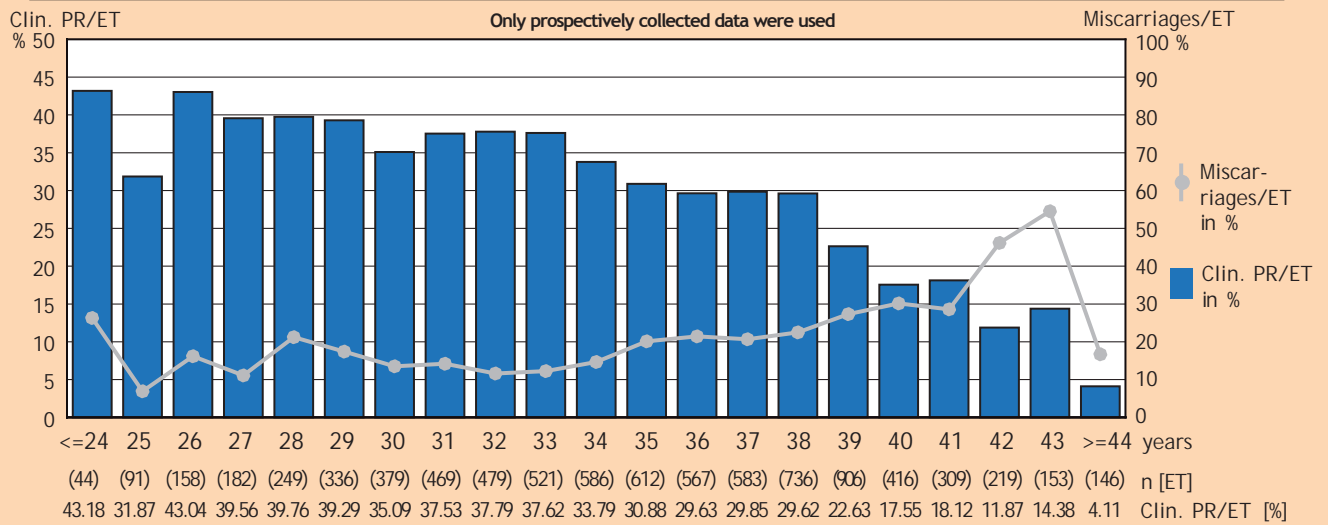
## ET from cryo-preserved 2PN 2010

	n	%	PN %	Transfer %	Clin. preg. %
Thawing cycles	16,854	100.00			
Thawed PN present	15,968	94.74	100.00		
Performed ET	15,674	93.00	98.16	100.00	
Clin. pregnancy	2,972	17.63	18.61	<b>18.96</b>	100.00
Delivery	1,159				39.00
Miscarriage	692				23.28
Ectopic pregnancy	62				2.09
n. a.	1,059				35.40

\*) Successful fertilisation of at least one oocyte per cycle

## Outcome as a function of woman's age

### IVF - 2010

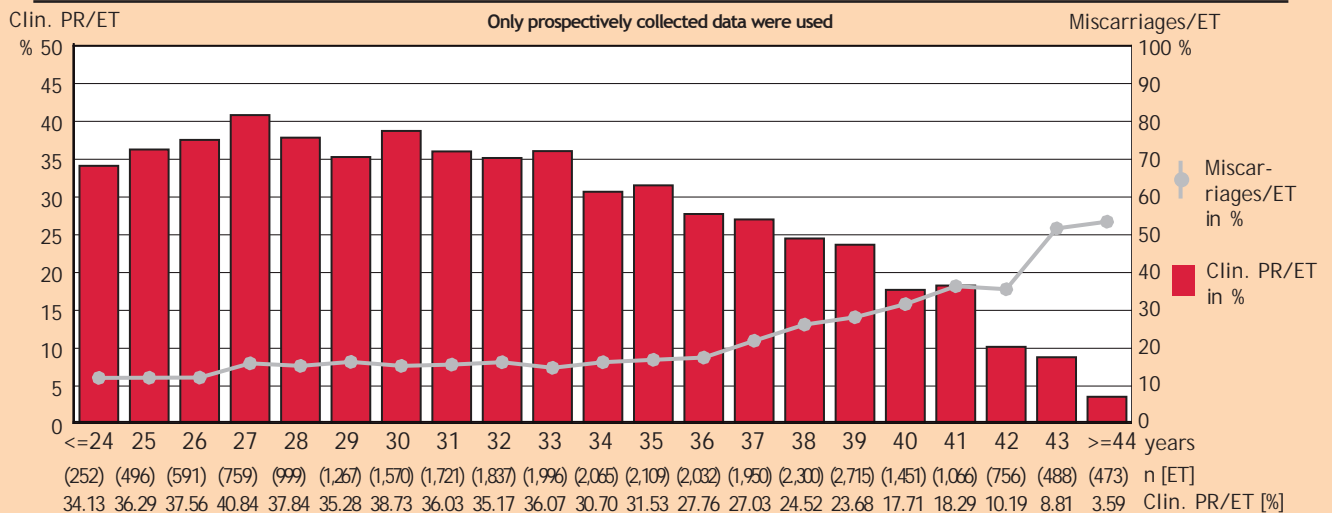


Age in years	OPU	Oocytes (mean)	Insemin. (mean)	ET	ET/OPU %	Transf. Emb. (mean)	Clin. preg.	Clin. PR/OPU %	Clin. PR/ET %	Clin. PR/ET % "ideal" *
<= 29	1,199	11.18	10.79	1,060	88.41	1.98	419	34.95	<b>39.53</b>	43.45
30 - 34	2,709	10.05	9.76	2,434	89.85	1.98	884	32.63	<b>36.32</b>	39.99
35 - 39	3,802	8.04	8.08	3,404	89.56	2.02	954	25.09	<b>28.03</b>	32.38
>= 40	1,433	5.91	6.07	1,243	86.74	2.07	183	12.77	<b>14.72</b>	18.28
Total	9,143	8.71	8.63	8,141	89.05	2.01	2,440	26.69	<b>29.97</b>	35.28

\*) "ideal": 2 embryos were transferred and at least 2 PN stages in abundance

## Outcome as a function of woman's age

### ICSI - 2010



Age in years	OPU	Oocytes (mean)	Injection (mean)	ET	ET/OPU %	Transf. Emb. (mean)	Clin. preg.	Clin. PR/OPU %	Clin. PR/ET %	Clin. PR/ET % "ideal" *
<= 29	4,639	12.03	9.50	4,364	94.07	1.99	1,623	34.99	<b>37.19</b>	40.66
30 - 34	9,735	10.71	8.64	9,189	94.41	2.02	3,228	33.16	<b>35.13</b>	38.21
35 - 39	12,006	8.70	7.20	11,106	92.51	2.08	2,963	24.68	<b>26.68</b>	31.06
>= 40	4,768	6.38	5.42	4,234	88.80	2.09	589	12.35	<b>13.91</b>	19.23
Total	31,148	9.47	7.74	28,893	92.77	2.05	8,403	26.98	<b>29.08</b>	34.20

\*) "ideal": 2 embryos were transferred and at least 2 PN stages in abundance

## Clinical pregnancy rate as a function of the number of embryos transferred and age groups 2010

IVF	1 Embryo		2 Embryos		3 Embryos		Total	
	ET	Clin. PR/ET %	ET	Clin. PR/ET %	ET	Clin. PR/ET %	ET	Clin. PR/ET %
Up to 24 years	5	60.00	35	40.00	4	50.00	44	43.18
25 - 29 years	83	20.48	874	41.42	59	35.59	1,016	39.37
30 - 34 years	275	18.55	1,935	38.91	224	35.71	2,434	36.32
35 - 39 years	523	13.34	2,292	30.15	589	31.92	3,404	28.03
40 - 44 years	253	6.32	582	17.18	346	19.08	1,181	15.41
45 years and older	25	0.00	18	5.56	19	0.00	62	1.61
<b>Total</b>	<b>1,164</b>	<b>13.92</b>	<b>5,736</b>	<b>33.49</b>	<b>1,241</b>	<b>28.77</b>	<b>8,141</b>	<b>29.97</b>

ICSI	1 Embryo		2 Embryos		3 Embryos		Total	
	ET	Clin. PR/ET %	ET	Clin. PR/ET %	ET	Clin. PR/ET %	ET	Clin. PR/ET %
Up to 24 years	26	15.38	205	35.61	21	42.86	252	34.13
25 - 29 years	350	19.14	3,450	39.01	312	39.74	4,112	37.38
30 - 34 years	966	18.22	7,039	37.52	1,184	34.71	9,189	35.13
35 - 39 years	1,668	14.15	6,904	28.85	2,534	29.01	11,106	26.68
40 - 44 years	966	7.04	1,638	15.51	1,388	19.02	3,992	14.68
45 years and older	102	1.96	70	1.43	70	0.00	242	1.24
<b>Total</b>	<b>4,078</b>	<b>13.56</b>	<b>19,306</b>	<b>32.67</b>	<b>5,509</b>	<b>28.01</b>	<b>28,893</b>	<b>29.08</b>

Cryo-transfer	1 Embryo		2 Embryos		3 Embryos		Total	
	ET	Clin. PR/ET %	ET	Clin. PR/ET %	ET	Clin. PR/ET %	ET	Clin. PR/ET %
Up to 24 years	21	19.05	79	16.46	21	19.05	121	17.36
25 - 29 years	292	13.01	1,446	22.34	417	25.66	2,156	21.71
30 - 34 years	831	12.03	3,526	20.76	1,106	24.32	5,468	20.15
35 - 39 years	1,065	12.11	3,587	19.32	1,274	22.76	5,939	18.74
40 - 44 years	395	9.37	1,009	13.38	531	17.33	1,939	13.67
45 years and older	14	7.14	22	4.55	15	6.67	51	5.88
<b>Total</b>	<b>2,618</b>	<b>11.80</b>	<b>9,669</b>	<b>19.62</b>	<b>3,364</b>	<b>22.68</b>	<b>15,674*</b>	<b>18.96</b>

\*) Embryos transferred plus 2PN stages; in 23 cases uncalculable

Only prospectively collected data were used.

## Clinical pregnancy rate as a function of the embryo quality 2010

IVF, ICSI, IVF/ICSI

Quality		<= 29 years		30 - 34 years		35 - 39 years		>= 40 years		Total	
Ideal	Non-ideal	ET	Clin. PR/ET %	ET	Clin. PR/ET %	ET	Clin. PR/ET %	ET	Clin. PR/ET %	ET	Clin. PR/ET %
0	1	83	4.82	225	6.22	384	4.43	234	2.99	926	4.54
0	2	340	25.29	719	19.19	819	15.14	235	3.83	2,113	16.89
0	3	30	13.33	102	15.69	202	14.36	147	4.76	481	11.64
1	0	381	22.83	1,026	20.86	1,820	16.26	1,118	7.07	4,345	15.56
1	1	554	30.14	1,085	29.86	1,325	22.64	427	17.33	3,391	25.51
1	2	31	25.81	127	25.20	282	22.70	157	14.65	597	21.28
2	0	3,667	42.02	7,165	40.92	7,044	32.03	1,639	16.66	19,515	35.88
2	1	79	43.04	248	30.65	535	31.78	329	16.41	1,191	28.05
3	0	254	42.91	921	39.63	2,094	31.47	1,185	20.76	4,454	30.96
<b>Total</b>		<b>5,424</b>	<b>37.65</b>	<b>11,623</b>	<b>35.38</b>	<b>14,510</b>	<b>27.00</b>	<b>5,477</b>	<b>14.10</b>	<b>37,034*</b>	<b>29.28</b>

\*) in 21 cases uncalculable

Only prospectively collected data were used.

## Clinical pregnancy rate as a function of the embryo quality 2010

### Cryo-transfer

Quality		After IVF		After ICSI	
Ideal	Non-ideal	ET	Clin. PR/ET %	ET	Clin. PR/ET %
0	1	106	4.72	459	5.66
0	2	261	9.20	987	11.35
0	3	104	21.15	349	13.47
1	0	498	13.05	1,454	13.96
1	1	493	15.21	1,426	16.13
1	2	94	21.28	337	20.77
2	0	1,622	22.13	4,543	22.96
2	1	199	25.63	460	24.13
3	0	434	25.58	1,197	25.48
Total*		3,811	19.26	11,212	19.15

\*) In 21 cases the previous method of treatment was IVF/ICSI; in 630 cases the previous method of treatment was unknown.

Only prospectively collected data were used.

## Miscarriage rates as a function of woman's age and the number of embryos transferred 2010

### IVF, ICSI, IVF/ICSI

Age in years	1 Embryo		2 Embryos		3 Embryos		Total	
	Clin. preg.	Miscarriage/ clin. preg. %	Clin. preg.	Miscarriage/ clin. preg. %	Clin. preg.	Miscarriage/ clin. preg. %	Clin. preg.	Miscarriage/ clin. preg. %
<= 24	7	28.57	89	13.48	11	18.18	107	14.95
25 - 29	85	22.35	1,736	14.34	150	16.67	1,971	14.87
30 - 34	233	15.88	3,474	14.42	498	15.66	4,205	14.65
35 - 39	314	21.97	2,762	20.71	941	24.76	4,017	21.76
40 - 44	85	30.59	362	33.15	341	37.54	788	34.77
45 =>	2	100.00	2	0.00	0	-	4	50.00
Total	726	21.35	8,425	17.26	1,941	24.01	11,092	18.71

### Cryo-transfer

Age in years	1 Embryo		2 Embryos		3 Embryos		Total	
	Clin. preg.	Miscarriage/ clin. preg. %	Clin. preg.	Miscarriage/ clin. preg. %	Clin. preg.	Miscarriage/ clin. preg. %	Clin. preg.	Miscarriage/ clin. preg. %
<= 24	4	25.00	13	23.08	4	25.00	21	23.81
25 - 29	38	15.79	323	19.20	107	19.63	468	19.02
30 - 34	100	28.00	732	19.26	269	23.42	1,102	21.05
35 - 39	129	20.93	693	26.84	290	22.41	1,113	24.98
40 - 44	37	43.24	135	29.63	92	32.61	265	32.83
45 =>	1	0.00	1	100.00	1	0.00	3	33.33
Total	309	25.24	1,897	22.83	763	23.59	2,972*	23.28

\*) in three cases the number of embryos transferred is not known

Only prospectively collected data were used.

### - IVF -

	u-FSH	rec-FSH	hMG only	rec-LH and rec-FSH	rec-FSH and hMG	Other*	n. a.	Total
<b>Short GnRHa</b>	7	370	440	25	91	15	8	956
Transfer rate (%)	100.00	93.78	95.00	92.00	92.31	86.67	100.00	94.14
Clin. PR/ET (%)	28.57	26.51	27.27	26.09	23.81	30.77	0.00	26.45
<b>Long GnRHa</b>	40	1,969	816	212	631	60	30	3,758
Transfer rate (%)	92.50	89.13	87.38	78.77	92.08	88.33	86.67	88.66
Clin. PR/ET (%)	29.73	34.81	27.21	34.73	30.46	33.96	19.23	32.23
<b>Without GnRH-analogues</b>	2	297	196	67	120	104	176	962
Transfer rate (%)	50.00	87.88	88.27	94.03	84.17	81.73	76.14	85.03
Clin. PR/ET (%)	0.00	35.25	30.06	25.40	29.00	37.65	23.13	30.70
<b>Antagonists</b>	28	1,878	766	178	265	327	25	3,467
Transfer rate (%)	89.29	90.15	88.25	88.20	91.32	86.24	68.00	89.18
Clin. PR/ET (%)	20.00	32.01	27.96	22.29	23.14	17.02	5.88	28.24
<b>Total</b>	<b>77</b>	<b>4,514</b>	<b>2,218</b>	<b>482</b>	<b>1,107</b>	<b>506</b>	<b>239</b>	<b>9,143</b>

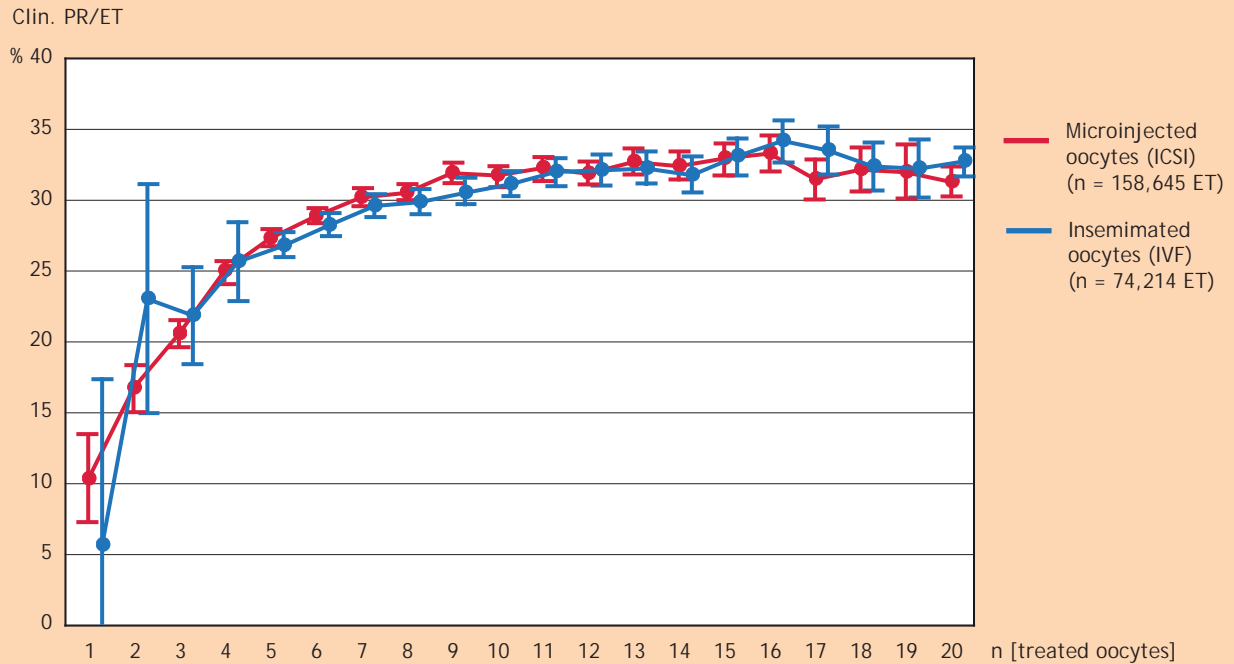
### - ICSI -

	u-FSH	rec-FSH	hMG only	rec-LH and rec-FSH	rec-FSH and hMG	Other*	n. a.	Total
<b>Short GnRHa</b>	73	1,005	801	106	281	100	2	2,368
Transfer rate (%)	87.67	94.83	91.76	89.62	88.26	90.00	100.00	92.36
Clin. PR/ET (%)	18.75	25.63	20.95	11.70	16.53	12.22	0.00	21.54
<b>Long GnRHa</b>	103	7,333	2,474	957	2,521	265	66	13,719
Transfer rate (%)	92.23	93.99	93.45	90.70	94.92	92.83	92.42	93.79
Clin. PR/ET (%)	40.00	34.23	29.71	34.45	30.59	23.17	9.84	32.47
<b>Without GnRH-analogues</b>	9	1,252	564	248	504	339	513	3,429
Transfer rate (%)	100.00	93.85	91.84	89.52	93.06	86.43	77.19	89.88
Clin. PR/ET (%)	11.11	34.47	24.37	22.97	28.14	21.50	16.92	27.08
<b>Antagonists</b>	69	6,306	2,417	748	1,177	814	101	11,632
Transfer rate (%)	91.30	94.21	89.45	91.71	93.54	88.33	87.13	92.50
Clin. PR/ET (%)	20.63	31.09	24.24	22.30	21.89	16.55	11.36	26.92
<b>Total</b>	<b>254</b>	<b>15,896</b>	<b>6,256</b>	<b>2,059</b>	<b>4,483</b>	<b>1,518</b>	<b>682</b>	<b>31,148</b>

\*) e. g. U-FSH and hMG, Clomifen/rec-FSH, Clomifen/hMG etc.

Only prospectively collected data were used.

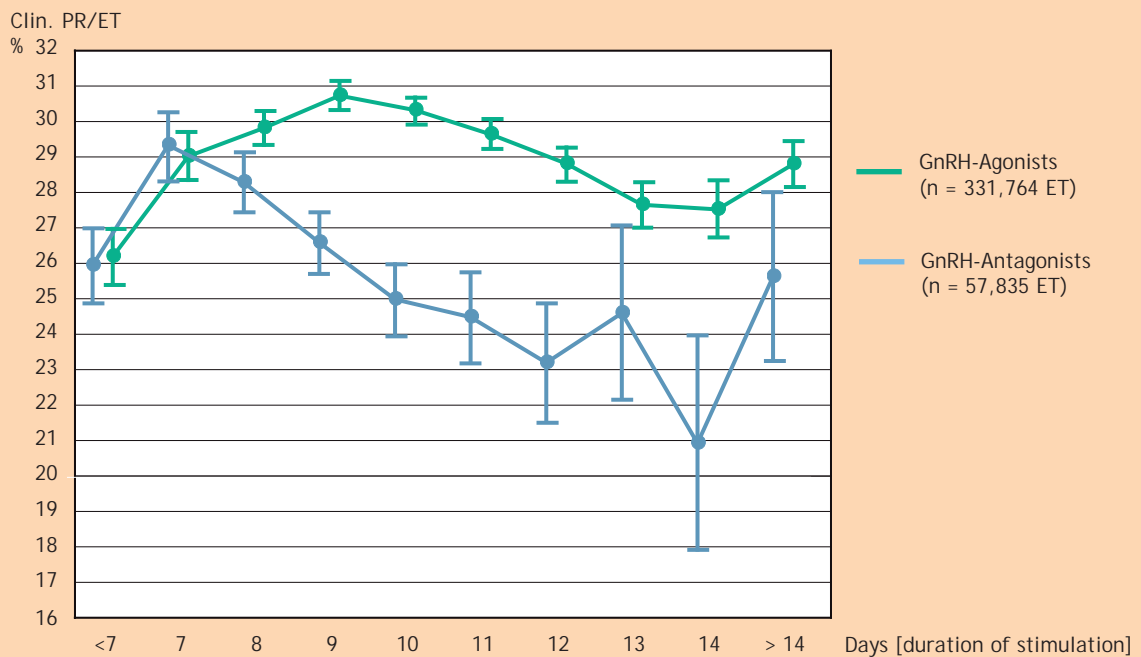
## Clinical pregnancy rate as a function of the number of oocytes inseminated/microinjected 1997 - 2010 IVF, ICSI



Only treatment cycles with a minimum of 5 oocytes collected during ovum pickup are analysed.

Prospectively and retrospectively collected data were used.

## Clinical pregnancy rate as a function of the duration of stimulation using GnRH-agonists or -antagonists, 2000 - 2010 IVF, ICSI

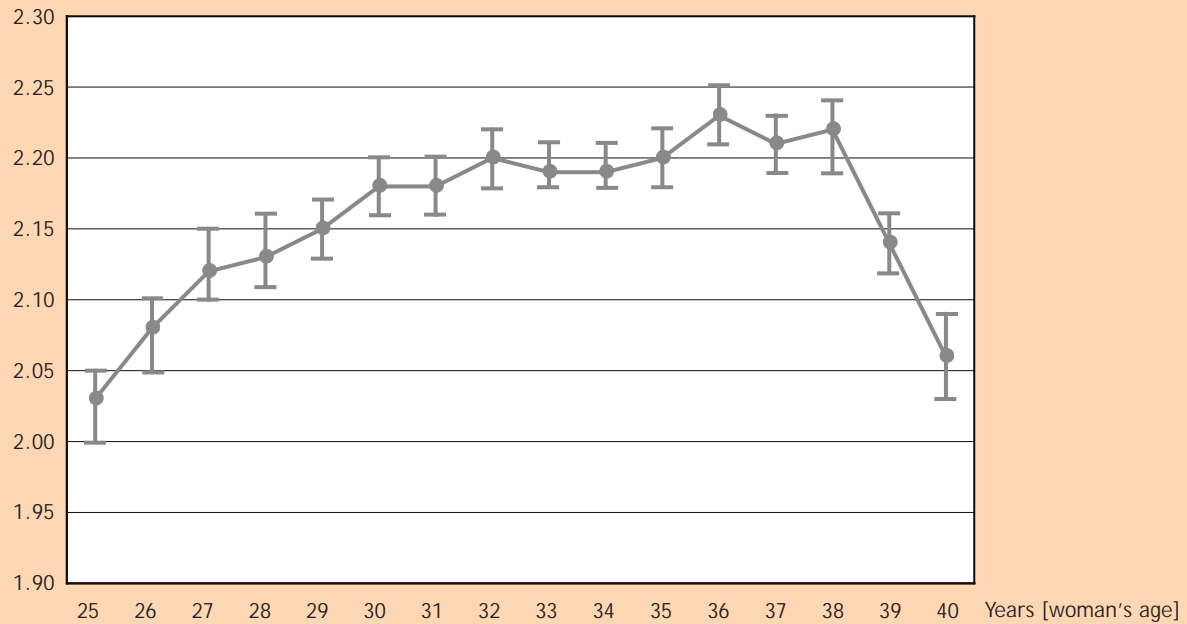


Prospectively and retrospectively collected data were used.



## Number of treatment cycles per patient as a function of woman's age 2000 - 2010 IVF, ICSI, IVF/ICSI

n [Treatment cycles per patient ]



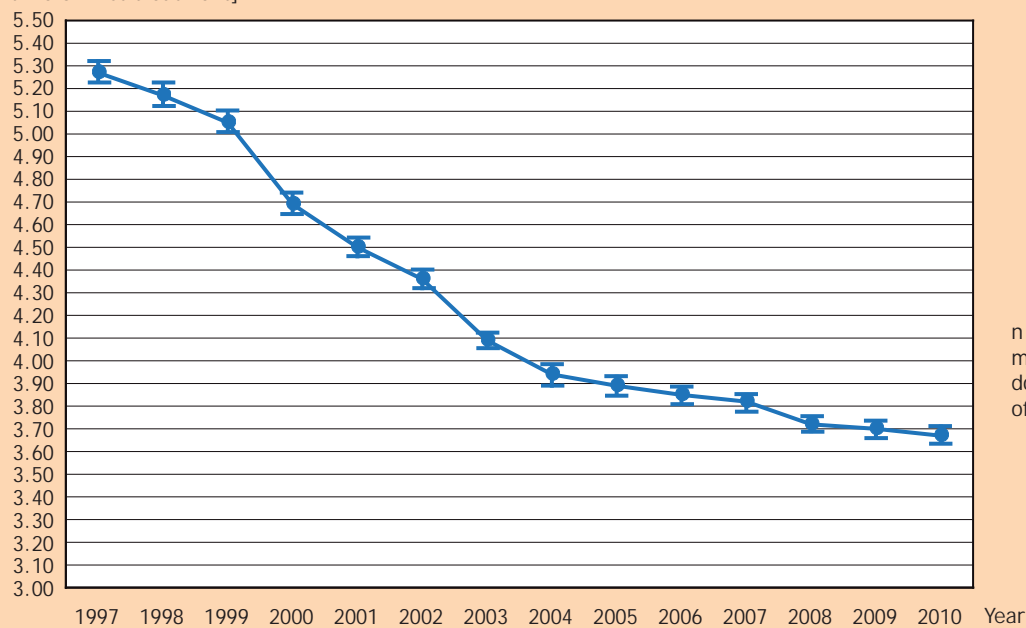
n = 292,209 cycles with plausible age documentation

Prospectively and retrospectively collected data were used.

## Duration of childlessness at the time of first treatment

1997 - 2010 IVF, ICSI, IVF/ICSI

Years [Duration of childlessness at the time of first treatment]

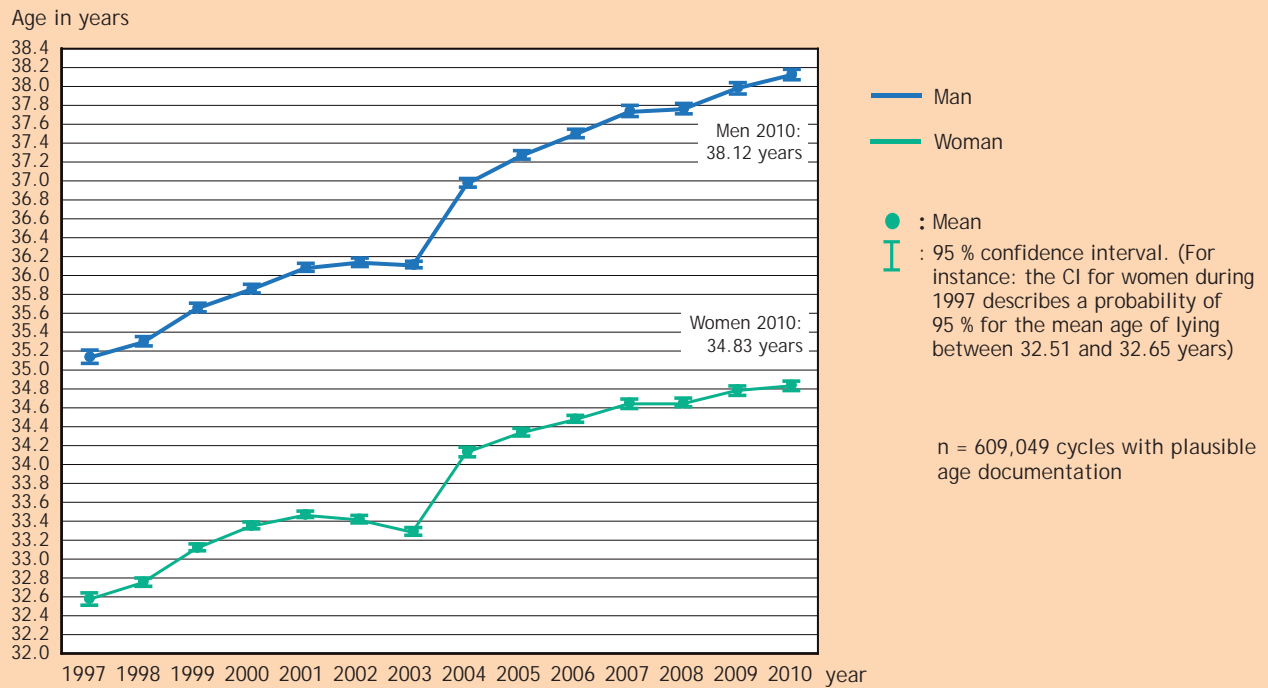


n = 305,981 first treatment cycles with documented duration of childlessness

Prospectively and retrospectively collected data were used.

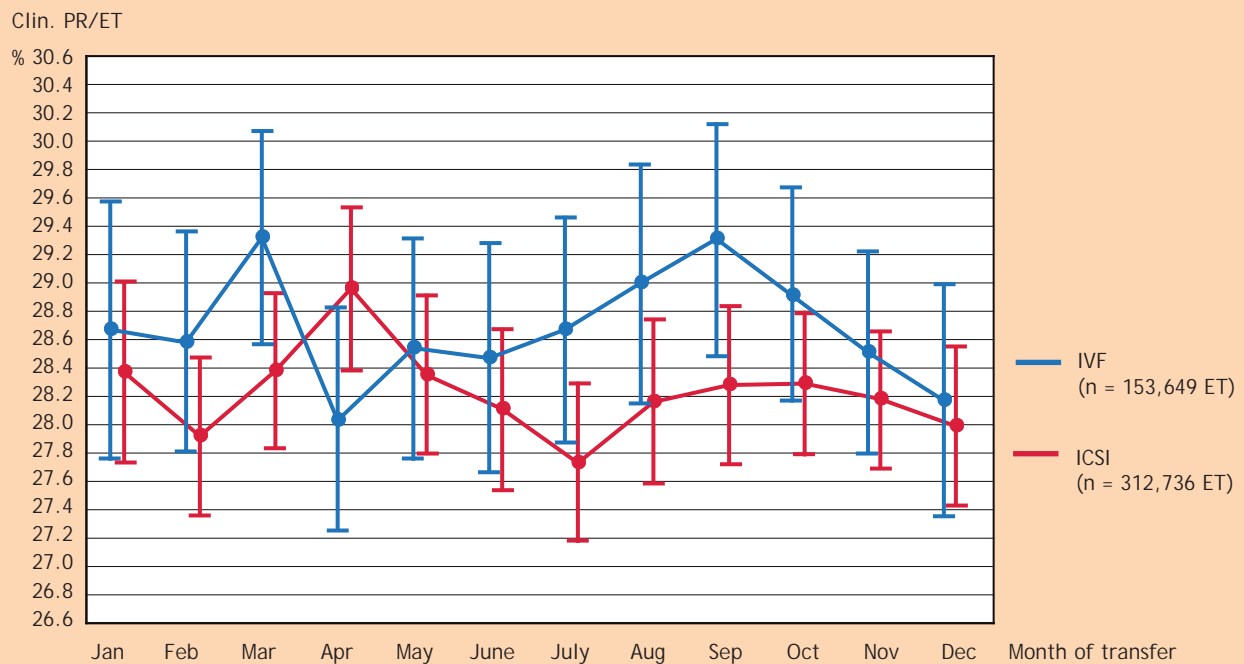
## Average age of women and men

1997 - 2010 - IVF, ICSI, IVF/ICSI



Prospectively and retrospectively collected data were used.

## Clinical pregnancy rate as a function of the month in which the embryotransfer was performed, 2000 - 2010 - IVF, ICSI



Prospectively and retrospectively collected data were used.

## All children born 1997 - 2010

prospective und retrospective data

### IVF, ICSI, IVF/ICSI

	Singleton		Twin		Triplet		Quadruplet		Total n
	n	%	n	%	n	%	n	%	
2000 *	5,418 (5,402)	59.01 (59.29)	3,242 (3,200)	35.31 (35.12)	513 (502)	5.59 (5.51)	8 (7)	0.09 (0.08)	9,181 (9,111)
2001 *	6,798 (6,774)	60.89 (61.04)	3,956 (3,919)	35.43 (35.31)	411 (405)	3.68 (3.65)	0 (0)	- -	11,165 (11,098)
2002 *	7,746 (7,724)	62.59 (62.78)	4,256 (4,210)	34.39 (34.22)	366 (362)	2.96 (2.94)	8 (7)	0.06 (0.06)	12,376 (12,303)
2003 *	10,723 (10,688)	62.13 (62.78)	5,960 (5,866)	34.53 (34.22)	552 (533)	3.20 (2.94)	24 (24)	0.14 (0.14)	17,259 (17,111)
2004 *	5,368 (5,352)	63.69 (62.46)	2,826 (2,801)	33.53 (34.28)	234 (223)	2.78 (3.11)	0 (0)	- -	8,428 (8,376)
2005 *	5,527 (5,515)	63.84 (63.90)	2,936 (2,906)	33.91 (33.44)	183 (179)	2.11 (2.66)	12 (11)	0.14 (0.13)	8,658 (8,611)
2006 *	5,906 (5,894)	65.50 (64.05)	2,922 (2,890)	32.41 (33.75)	189 (174)	2.10 (2.08)	0 (0)	- -	9,017 (8,958)
2007 *	6,663 (6,628)	64.56 (64.69)	3,504 (3,471)	33.95 (33.88)	150 (143)	1.45 (1.40)	4 (4)	0.04 (0.04)	10,321 (10,246)
2008 *	6,598 (6,574)	63.97 (64.21)	3,492 (3,445)	33.86 (33.65)	216 (211)	2.09 (2.06)	8 (8)	0.08 (0.08)	10,314 (10,238)
2009 *	6,922 (6,886)	65.66 (65.79)	3,426 (3,390)	32.50 (32.39)	186 (183)	1.76 (1.75)	8 (8)	0.08 (0.08)	10,542 (10,467)
2010 *	4,046 (4,013)	63.59 (63.77)	2,182 (2,151)	34.29 (34.18)	135 (129)	2.12 (2.05)	0 (0)	- -	6,363 (6,293)

\*) Values in brackets refer to live births. Added values of all years (1997 - 2010) observed revealed the following results: 84,493 singleton (84,161), twin 46,202 (45,655), triplet 4,755 (4,612), quadruplet 88 (85); total: 135,538 (134,513)

### Total (IVF, ICSI, IVF/ICSI, cryo-transfer)

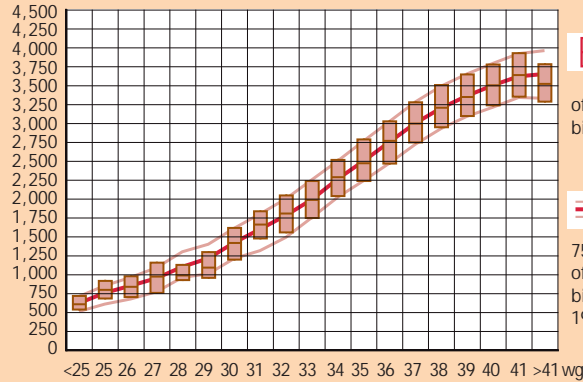
	Singleton		Twin		Triplet		Quadruplet		Total n %
	n	%	n	%	n	%	n	%	
2000 *	6,207 (6,189)	60.46 (60.72)	3,524 (3,479)	34.32 (34.13)	528 (517)	5.14 (5.07)	8 (7)	0.08 (0.07)	10,267 (10,192)
2001 *	7,795 (7,764)	62.20 (62.33)	4,288 (4,248)	34.21 (34.10)	450 (444)	3.59 (3.56)	0 (0)	- -	12,533 (12,456)
2002 *	8,930 (8,902)	63.84 (64.02)	4,662 (4,615)	33.33 (33.19)	387 (382)	2.77 (2.75)	8 (7)	0.06 (0.05)	13,987 (13,906)
2003 *	11,922 (11,887)	63.16 (63.48)	6,334 (6,237)	33.55 (33.31)	597 (578)	3.16 (3.09)	24 (24)	0.13 (0.13)	18,877 (18,726)
2004 *	6,891 (6,869)	65.63 (65.81)	3,336 (3,306)	31.77 (31.68)	273 (262)	2.60 (2.51)	0 (0)	- -	10,500 (10,437)
2005 *	7,038 (7,020)	65.76 (65.93)	3,440 (3,408)	32.14 (32.01)	213 (209)	1.99 (1.96)	12 (11)	0.11 (0.10)	10,703 (10,648)
2006 *	7,419 (7,402)	66.87 (67.14)	3,450 (3,417)	31.10 (30.99)	222 (202)	2.00 (1.83)	4 (4)	0.04 (0.04)	11,095 (11,025)
2007 *	8,407 (8,364)	66.35 (66.45)	4,076 (4,043)	32.17 (32.12)	183 (176)	1.44 (1.40)	4 (4)	0.03 (0.03)	12,670 (12,587)
2008 *	8,326 (8,298)	65.68 (65.95)	4,102 (4,044)	32.36 (32.14)	240 (232)	1.89 (1.84)	8 (8)	0.06 (0.06)	12,676 (12,582)
2009 *	8,632 (8,585)	67.11 (67.20)	4,010 (3,972)	31.17 (31.09)	213 (210)	1.66 (1.64)	8 (8)	0.06 (0.06)	12,863 (12,775)
2010 *	5,209 (5,168)	65.58 (65.75)	2,554 (2,520)	32.15 (32.06)	180 (172)	2.27 (2.19)	0 (0)	- -	7,943 (7,860)

\*) Values in brackets refer to live births. Added values of all years (1997 - 2010) observed revealed the following results: singleton 100,954 (100,550), twin 51,732 (51,145), triplet 5,181 (5,025), quadruplet 92 (89); total: 157,959 (156,809)

# Childrens birth weight (bw) and week of gestation (wg) 2009\*

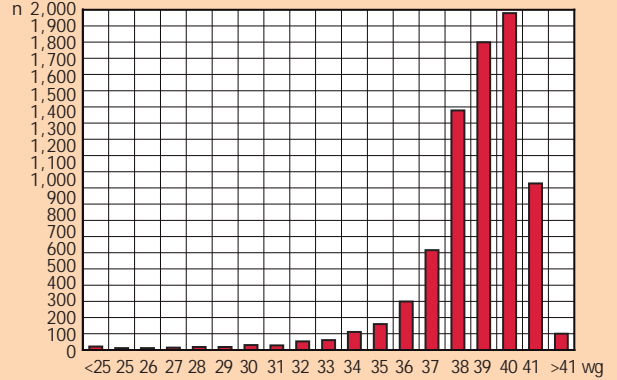
Birth weight in grams

## Singleton 2009



25er-, 50er- and 75er-percentile of the average birth weight 2009

25er-, 50er- and 75er-percentile of the average birth weight 1997 - 2010

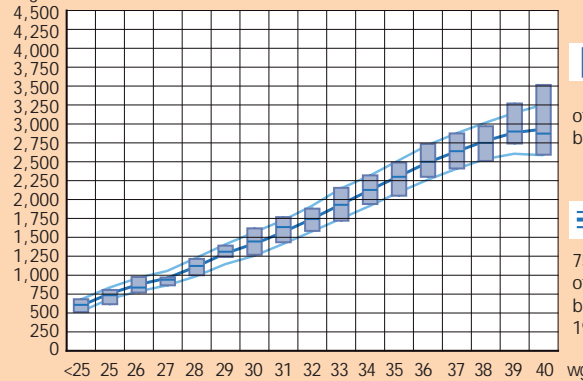


wg	< 25	25	26	27	28	29	30	31	32	33	34	35	36	37	38	39	40	41	> 41	total
n	21	11	11	14	18	18	30	28	53	61	111	160	299	616	1,478	1,899	2,079	1,028	100	8,035
bw Q 25	540	687	705	760	930	960	1,200	1,480	1,560	1,750	2,040	2,240	2,470	2,750	2,950	3,100	3,240	3,355	3,290	2,990
bw median	610	800	840	975	990	1,095	1,422	1,664	1,810	1,990	2,290	2,475	2,770	3,000	3,210	3,350	3,505	3,640	3,524	3,330
bw Q 75	720	920	980	1,160	1,130	1,300	1,620	1,840	2,050	2,240	2,520	2,790	3,030	3,280	3,510	3,650	3,780	3,930	3,785	3,660

Percentiles 2009: p25 = 38th wg, p50 = 39th wg, p75 = 40th wg; Percentiles 1997 - 2010: p25 = 38th wg, p50 = 39th wg, p75 = 40th wg  
 Percentage of children born before completion of 37th wg: 18.06 %

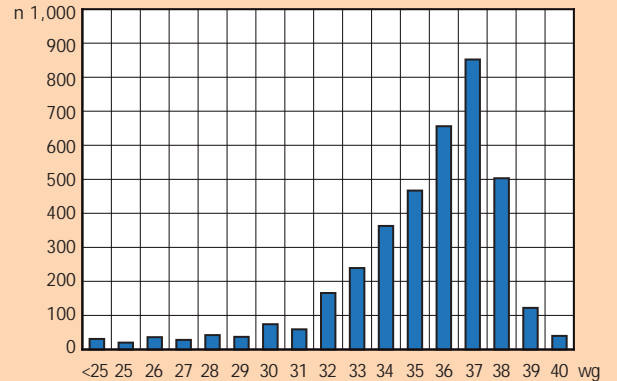
Birth weight in grams

## Twin 2009



25er-, 50er- and 75er-percentile of the average birth weight 2009

25er-, 50er- and 75er-percentile of the average birth weight 1997 - 2010



wg	<25	25	26	27	28	29	30	31	32	33	34	35	36	37	38	39	40	total*
n	31	20	36	28	42	37	74	59	166	239	363	467	656	852	503	122	40	3,745
bw Q 25	513	615	770	865	1,000	1,240	1,270	1,435	1,585	1,720	1,940	2,050	2,300	2,410	2,510	2,740	2,593	2,000
bw median	608	735	835	940	1,123	1,310	1,445	1,635	1,743	1,930	2,128	2,300	2,500	2,640	2,750	2,900	2,873	2,405
bw Q 75	681	805	975	970	1,215	1,390	1,620	1,768	1,880	2,155	2,320	2,490	2,735	2,875	2,970	3,270	3,515	2,740

Percentiles 2009: p25 = 34th wg, p50 = 36th wg, p75 = 37th wg; Percentiles 1997 - 2010: p25 = 34th wg, p50 = 36th wg, p75 = 37th wg  
 Percentage of children born before completion of 37th wg: 81.98 %

\*) Data contain 10 cases wg > 40

## Triplet 2009

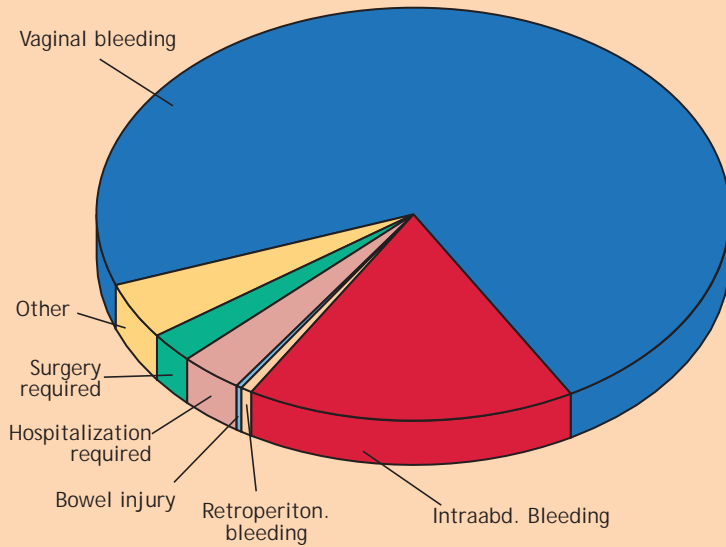
wg	24	25	26	27	28	29	30	31	32	33	34	35	36	37	total*
n	3	3	3	8	15	18	15	27	36	18	18	18	3	3	188
bw Q 25	640	740	745	803	945	990	1,120	1,390	1,465	1,440	1,800	1,885	2,660	2,860	1,145
bw median	681	745	745	900	990	1,200	1,200	1,490	1,690	1,695	1,990	2,185	3,050	3,940	1,490
bw Q 75	698	795	825	1,038	1,106	1,360	1,320	1,630	1,960	1,980	2,100	2,315	3,680	4,500	1,920

Percentiles 2009: p25 = 29th wg, p50 = 32th wg, p75 = 33th wg; Percentiles 1997 - 2010: p25 = 30th wg, p50 = 32th wg, p75 = 33th wg  
 Percentage of children born before completion of 37th wg: 98.40 %

\*) Children with plausible birth weight and week of gestation

Prospectively and retrospectively collected data were used.

## Complications as a function of ovum pick up 2010



Total OPU's	50,583	100.00 %
n. a.	398	0.79
No complications	49,846	98.54
Complications	339	0.67

Complication	n	%
Vaginal bleeding	245	72.27
Intraabdom. bleeding	57	16.81
Retroperiton. bleeding	2	0.59
Bowel injury	1	0.29
Hospitalization required	11	3.24
Surgery required	8	2.36
Other	15	4.42
<b>Total</b>	<b>339</b>	<b>100.00</b>

Only prospectively collected data were used.

## OHSS as a function of the stimulation protocol

IVF, ICSI, IVF/ICSI 2010

	Stimulation	%	Oocytes retrieved	OHSS III/ST	%
<b>Short GnRH</b>	3,346	8.14	7.52	3	0.09
FSH only	1,466		8.60	2	0.14
hMG only	1,250		7.19	1	0.08
FSH und hMG	472		5.65	0	-
Other	148		5.73	0	-
n. a.	10		7.10	0	-
<b>Long GnRH</b>	17,928	43.62	10.52	52	0.29
FSH only	9,840		11.22	27	0.27
hMG only	3,340		9.24	3	0.09
FSH und hMG	3,386		10.22	19	0.56
Other	1,262		9.35	3	0.24
n. a.	100		8.82	0	-
<b>Without analogues</b>	4,435	10.79	8.64	6	0.14
FSH only	1,581		10.61	3	0.19
hMG only	765		8.17	1	0.13
FSH und hMG	690		9.20	1	0.14
Other	709		7.13	1	0.14
n. a.	690		5.67	0	-
<b>Antagonists</b>	15,393	37.45	8.69	32	0.21
FSH only	8,507		10.07	19	0.22
hMG only	3,226		7.50	7	0.22
FSH und hMG	1,644		7.48	5	0.30
Other	1,890		5.79	1	0.05
n. a.	126		5.17	0	-
<b>Total</b>	<b>41,102</b>	<b>100.00</b>	<b>9.39</b>	<b>93</b>	<b>0.23</b>

Only prospectively collected data were used.

# Percentage of centres hopping compared with clin. PR/ET between the largest 100 centres 1997 - 2010

Base: the largest 100 centres with at least 750 women and number of treatment cycles > 2,000. n = 328,980 women

● PR/ET in %

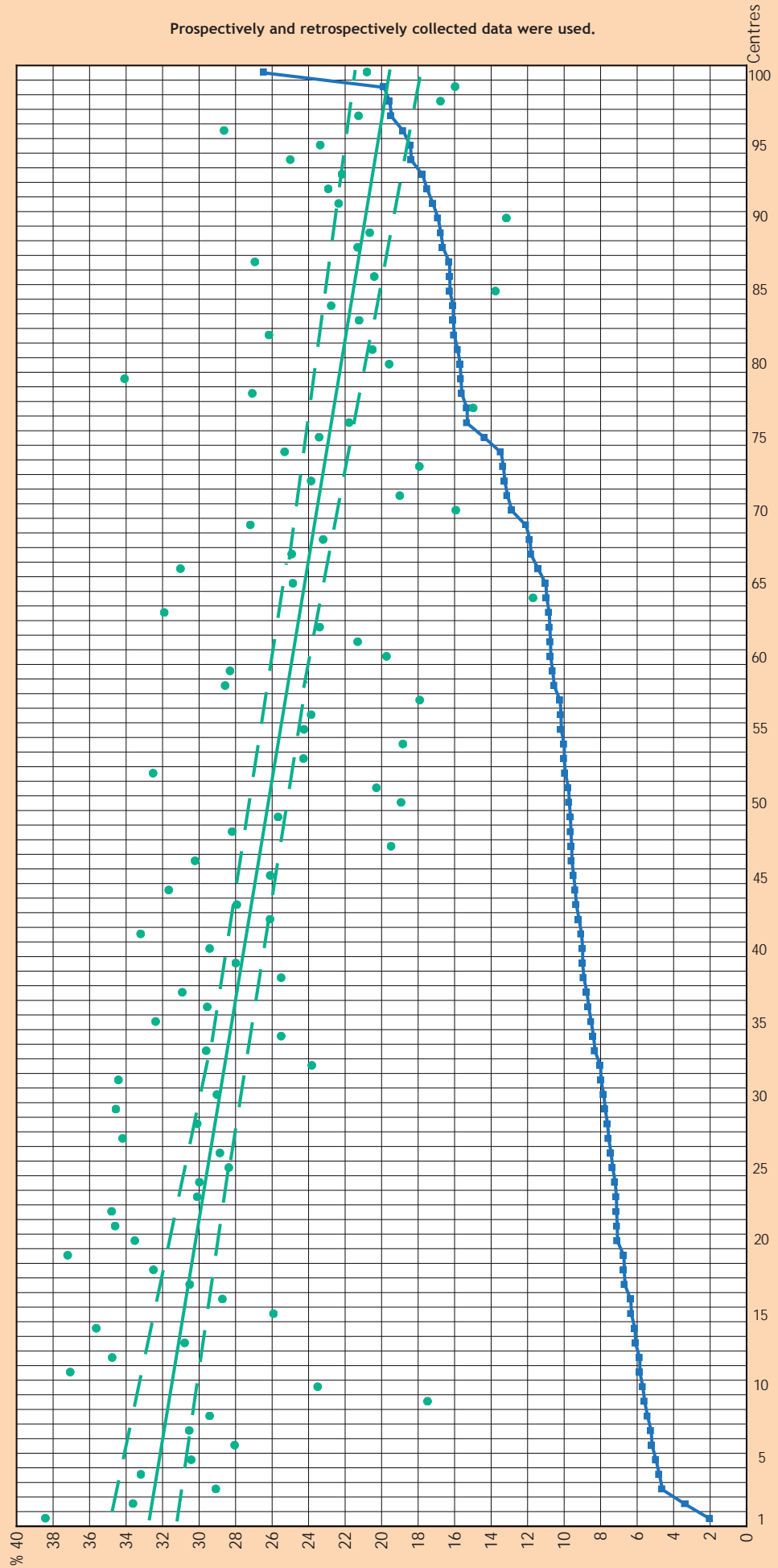
■ Change-rate in %

Definition "center hopping":  
"Centre hopping": a couple changes the fertility centre after at least one treatment cycle.  
Irreversible encryption.

Interpretation of results:

The change-rate seems to rise in correlation to decreasing pregnancy-rates

— The linear function is a method positioning a best-fit line in a scatter plot so that the mean square aviation of the data points is minimized by this function.  
The straight line indicates the linear regression function of the single values of the particular item.







# Centres reporting to the German IVF Registry in 2010



Praxisklinik  
Dr. med. Hans-Jürgen Held  
Prager Str. 8a  
01069 Dresden  
Tel. 0351/501 400 0, Fax -501 400 28  
info@ivf-dresden.de  
www.ivf-dresden.de

Univ.-Klinikum Carl Gustav Carus Dresden  
Klinik und Poliklinik für Frauenheilkunde  
und Geburtshilfe  
Prof. Dr. med. Wolfgang Distler,  
Dr. med. Evelyn Gouma,  
Dr. rer. nat. Gudrun Keck  
Fetscherstr. 74  
01307 Dresden  
Tel. 0351/458-3420, Fax -458-4329  
Frauenklinik@uniklinikum-dresden.de  
www.uniklinikum-dresden.de/gyn

Zentrum für Reproduktionsmedizin,  
Gynäkologische Endokrinologie und  
Sexualmedizin, UFK Leipzig  
Prof. Dr. med. H. Alexander,  
Dr. med. G. Pretzsch,  
Dr. med. D. Marx,  
Dipl.-Biol. W. Weber  
Liebigstr. 20 a  
04103 Leipzig  
Tel. 0341/97 23 477, Fax -97 23 469  
Henry.alexander@medizin.uni-leipzig.de  
www.reproduktionsmedizin-leipzig.de

Kinderwunschzentrum Leipzig - Chemnitz  
Dres. F. A. Hmeidan,  
P. Jogschies,  
D. Geistert,  
L. Shugair,  
A. Lahl  
Goldschmidtstr. 30  
04103 Leipzig  
Tel. 0341/14120-0, Fax -14120-81  
info@IVF-Leipzig.de  
www.ivf-leipzig.de

Kinderwunschzentrum Praxisklinik City  
Leipzig, Standort Leipzig  
Dr. med. Astrid Gabert,  
Dr. med. Katharina Bauer,  
Dr. med. Georg Saager,  
FÄ Jana Sonneck  
Petersstr. 1  
04109 Leipzig  
Tel. 0341/215855-0, Fax -215855-17  
info@ivf-city-leipzig.de  
www.praxisklinik-city-leipzig.de

Universitätsklinikum Halle (Saale)  
Zentr. f. Reproduktionsmedizin u. Andrologie  
Univ.-Prof. Dr. med. Hermann M. Behre,  
Dr. med. Petra Kaltwasser,  
Dr. med. Solveig Köller,  
Dr. rer. nat. Ewald Seliger  
Ernst-Grube-Str. 40  
06120 Halle (Saale)  
Tel. +49 345/55747-82, Fax -55747-88  
ZRA@medizin.uni-halle.de  
www.medizin.uni-halle.de/zra

Reproduktionsmedizinisches Zentrum Jena  
Priv.-Doz. Dr. med. habil. H. Fritzsche,  
Dipl.-Med. J.-P. Reiher,  
Dr. med. A. Hoffmann  
Markt 4  
07743 Jena  
Tel. 03641/8296-80, Fax -8296-81  
Dr.H.Fritzsche@t-online.de  
www.kinderwunschnet.de

Universitätsfrauenklinik Jena  
Prof. Dr. med. Jürgen Weiss,  
Dr. rer. nat. Ines Hoppe  
Bachstr. 18  
07743 Jena  
Tel. 03641/933 529, Fax -933 191  
ines.hoppe@med.uni-jena.de  
www.uniklinikum-jena.de

Kinderwunschzentrum Leipzig - Chemnitz  
Dres. F. A. Hmeidan,  
P. Jogschies,  
D. Geistert,  
L. Shugair,  
A. Lahl  
Jakobikirchplatz 4  
09111 Chemnitz  
Tel. 0371/503 4980, Fax -503 49881  
info@ivf-chemnitz.de  
www.ivf-chemnitz.de

Kinderwunschzentrum Praxisklinik City  
Leipzig, Standort Chemnitz  
Dr. med. Astrid Gabert,  
Dr. med. Katharina Bauer,  
Dr. med. Georg Saager,  
FÄ Jana Sonneck  
Flemmingstr. 2a  
09116 Chemnitz  
Tel. 0371/433 130 0, Fax -433 130 17  
info@kinderwunschzentrum-chemnitz.de  
www.praxisklinik-city-leipzig.de

Praxisklinik Sydow  
Am Gendarmenmarkt  
Kronenstr. 55 - 58  
10117 Berlin  
Tel. 030/2 06 26 72-0, Fax -2 06 26 72-18  
info@praxisklinik-sydow.de  
www.praxisklinik-sydow.de

Kinderwunschzentrum Berlin, Akademische  
Lehrpraxis der Charité, Universitätsmedizin  
Frauenärztliche Gemeinschaftspraxis  
Dr. med. Reinhard Hannen,  
Dr. med. Christian F. Stoll  
Landgrafenstr. 14  
10787 Berlin  
Tel. 030/263 983 0, Fax -263 983 99  
info@kinderwunschzentrum.de  
www.kinderwunschzentrum.de

Arbeitsgruppe Reproduktionsmedizin im  
Lützow Center  
Dr. med. Detlef H. G. Temme & Kollegen  
Wichmannstr. 5  
10787 Berlin  
Tel. 030/230 998-0, Fax -230 998-30  
info@ivf-berlin.de  
www.ivf-berlin.de

Kinderwunschzentrum an der  
Gedächtniskirche  
Dr. med. Matthias Bloechle,  
Dr. med. Silke Marr  
Rankestr. 34  
10789 Berlin  
Tel. 030/219092-0, Fax -219092-99  
info@kinderwunsch-berlin.de  
www.kinderwunsch-berlin.de

Fera Gemeinschaftspraxis im  
Wenckebach-Klinikum  
Dr. med. Andreas Jantke,  
Dr. med. Anna Stegelmann,  
Dipl. biol. Cornelia Meyer  
Wenckebachstr. 23  
12099 Berlin  
Tel. 030/7600 70 130, Fax -7600 70 160  
dr.jantke@fera-berlin.de  
www.kinderwunsch-ivf-berlin.de

Kinderwunschzentrum am  
Innsbrucker Platz Berlin  
Babette Remberg,  
Dr. med. Susanne Tewordt-Thyselius,  
Dr. rer. nat. Thomas Jeziorowski  
Hauptstr. 65  
12159 Berlin  
Tel. 030/857 57 930, Fax -857 57 935  
praxis@kinderwunschpraxis-berlin.de  
www.kinderwunschpraxis-berlin.de

Kinderwunschpraxis Berlin - Helle Mitte  
Dr. med. Muna Zaghoul-Abu Dakah,  
Dr. med. Svetlana Hoffmann,  
Dr. med. G. Matheus  
Stendaler Str. 24  
12627 Berlin  
Tel. 030/9927790, Fax -99277922  
info@berliner-kinderwunsch.de  
www.berliner-kinderwunsch.de

Fertility Center Berlin  
Dr. med. Andreas Tandler-Schneider,  
Prof. Dr. med. Heribert Kentenich,  
Dr. med. Anette Siemann,  
Dr. med. Gabriele Stief,  
Dr. med. Marina Werling  
Spandauer Damm 130  
14050 Berlin  
Tel. 030/233 2081 10, Fax -233 2081 19  
info@fertilitycenterberlin.de  
www.fertilitycenterberlin.de

Kinderwunschzentrum Potsdam  
Dr. Kay-Th. Moeller  
Babelsberger Straße 8  
14473 Potsdam  
Tel. 0331/2318 92 92, Fax -2318 92 93  
info@kinderwunsch-potsdam.de  
www.kinderwunsch-potsdam.de

Kinderwunschzentrum Neubrandenburg  
Prof. Dr. med. Roland Sudik,  
Dr. med. Konstanze Kissing-Pahl  
S.-Allende-Str. 30  
17036 Neubrandenburg

Praxis für Fertilität Rostock  
PD Dr. med. H. Müller,  
A. Busecke,  
A. Bossow  
Südring 81  
18059 Rostock  
Tel. 0381/4401-2030, Fax -4401-2031  
info@ivf-rostock.de  
www.ivf-rostock.de

MVZ Fertility Center Hamburg GmbH  
Dr. (IL) R. Fischer,  
Dr. O. G. J. Naether,  
Prof. Dr. K. Rudolf,  
Dr. K. C. Löbbecke  
Speersort 4  
20095 Hamburg  
Tel. 040/3080-4530, Fax -3080-4956  
RFischer@fertility-center-hh.de  
www.fertility-center-hh.de

Kinderwunschzentrum Altonaer Straße  
GMP Bispink, Horn, Michel und Partner  
Dres. med. Bispink, Horn, Michel, Aytekin,  
Göhmann, Acar-Nosir, Prof. Hinrichsen  
Altonaer Str. 59  
20357 Hamburg  
Tel. 040/306836-0, Fax -306836-69  
info@ivf-hamburg.de  
www.ivf-hamburg.de

Kinderwunschzentrum Fleetinsel Hamburg  
Dr. med. Semsettin Kocak,  
Dr. med. Peter List,  
Dr. rer. nat. Uwe Weidner  
Admiralitätstraße 4  
20459 Hamburg  
Tel. 040/386 055 50, Fax -386 055 51  
info@kinderwunschzentrum-hamburg.de  
www.kinderwunschzentrum-hamburg.de

Endokrinologikum Hamburg  
Zentrum für Hormon- und Stoffwechsel-  
erkrankungen, Reproduktionsmedizin und  
Pränatale Medizin  
Lornsenstraße 4 - 6  
22767 Hamburg  
Tel. 040/306 28-200, Fax -306 28-349  
christoph.keck@endokrinologikum.com  
www.endokrinologikum.com

Universitäres Kinderwunschzentrum  
Lübeck  
Prof. Dr. Dr. h. c. mult. K. Diedrich,  
Prof. Dr. Georg Griesinger, M. Sc.,  
PD Dr. Askan Schultze-Mosgau,  
Dr. Tim Cordes  
Ratzeburger Allee 160  
23538 Lübeck  
Tel. 0451/500-4418, Fax -500-5764  
Kinderwunsch@uk-sh.de  
www.kinderwunsch-luebeck.de

fertilitycenterkiel  
Priv.-Doz. Dr. Sören von Otte,  
Dr. Heike Eckel und Kollegen  
Prüner Gang 15  
24103 Kiel  
Tel. 0431/97413 33, Fax -97413 89  
info@fertilitycenter.de  
www.fertilitycenter.de

gyn-medicum Zentrum für Kinderwunsch  
im UK-SH, Campus Kiel  
Dr. Andreas Schmutzler,  
Prof. Dr. Ali Salmassi  
Arnold-Heller-Str. 3, Haus 24  
24105 Kiel  
Tel. 0431/597 20 83, Fax -597 53 52  
www.kinderwunschunikiel.de

Kinderwunsch Kiel  
Dr. med. K. Brandenburg,  
Dr. sc. agr. A. Bonhoff,  
Dr. med. A. Carstensen  
Im Brauereiviertel 5  
24118 Kiel  
Tel. 0431/553 433, Fax 0431/519 27 45  
info@kinderwunschkiel.de  
www.kinderwunschkiel.de

Team Kinderwunsch Oldenburg  
Dr. med. Saif ed-Din Jibril,  
Dr. med. Gerhard Pohl  
Wilhelmstr. 5  
26121 Oldenburg  
Tel. +49 441/248 9091, Fax - 248 0611  
tko@telemed.de  
www.teamkinderwunsch.de

Tagesklinik Oldenburg  
Zentrum für Kinderwunschbehandlung  
Dr. med. Jörg Hennefründ,  
Dr. med. Heike Boppert,  
Dr. med. Michael Heeder  
Achternstr. 21  
26122 Oldenburg  
Tel. 0441/922 700, Fax -922 7028  
info@tagesklinik-oldenburg.de  
www.tagesklinik-oldenburg.de

Zentrum für Fortpflanzungsmedizin  
Dr. med. Wolfgang von der Burg  
Hafenstr. 6 d  
26789 Leer (Ostfriesland)  
Tel. 0491/4542 50, Fax -4542 510  
zff-leer@t-online.de  
www.fortpflanzungsmedizinfriesland.de

Kinderwunsch Bremen  
Dr. Achim v. Stutterheim, Tanja Finger,  
Dr. Susanne Meyer-Ströh,  
Nicole Hunenbart  
Emmastr. 220  
28213 Bremen  
Tel. 0421/2249 10, Fax -2249 122  
info@kinderwunschbremen.de  
www.kinderwunschbremen.de  
BZF - Bremer Zentrum für  
Fortpflanzungsmedizin  
Dr. med. Olaf Drost,  
Prof. Dr. med. Ernst Heinrich Schmidt,  
Dr. sc. hum. Martin Pinteric  
Gröpelinger Heerstr. 406 - 408  
28239 Bremen  
Tel. 0421/6102-1212, Fax -6102-1213  
info@icsi.de  
www.icsi.de

Team Kinderwunsch Hannover  
Dr. med. N. Saymé,  
Klaus-Peter Zollner, M. Sc.  
Brühlstr. 19  
30169 Hannover  
Tel. 0511/3130 95, Fax -3130 96  
info@team-kinderwunsch-hannover.de  
www.team-kinderwunsch-hannover.de

Med. Hochschule Hannover, Frauenklinik,  
Bereich Gynäkologische Endokrinologie  
und Reproduktionsmedizin, OE 6410  
OÄ Dr. Cordula Schippert,  
OA Dr. Guillermo-José Garcia-Rocha,  
FÄ Dr. Christina Baßler,  
AssÄ Dr. Wiebke Zempel  
Carl-Neuberg-Str. 1  
30625 Hannover  
Tel. 0511/532 60 99, Fax -532 60 94  
Schippert.Cordula@mh-hannover.de  
www.mh-hannover.de/11327.html

Kinderwunschzentrum  
Langenhagen - Wolfsburg  
Dr. Martina Müseler-Albers, Dr. Klaus Bühler,  
Horst Peter Arendt, Dr. Thilo Schill  
Ostpassage 9  
30853 Langenhagen  
Sauerbruchstr. 7b (Klinikum Wolfsburg)  
38440 Wolfsburg  
Tel. 0511/97230-0, Fax -97230-18  
praxis@kinderwunsch-langenhagen.de  
www.kinderwunsch-langenhagen.de

Zentrum für Reproduktionsmedizin und  
Humangenetik Hildesheim  
Dres. med. Algermissen, Justus, Wilke,  
Krämer, Graf  
Gartenstraße 18 - 20  
31141 Hildesheim  
Tel. 05121/20 67 90, Fax -20 67 911  
praxis@kinderwunsch-hildesheim.de  
www.kinderwunsch-hildesheim.de

Deutsche Klinik Bad Münder  
Zentrum für Reproduktionsmedizin  
MVZ wagnerstibbe GmbH  
Dr. med. Bispink, Dr. med. Breitbach,  
Dr. med. Chandra, Dr. med. Hasselbach,  
Dr. med. Peper  
Hannoversche Str. 24  
31848 Bad Münder  
Theaterstraße 14  
30159 Hannover  
Tel. 05042/940 360, Fax -940 308  
info@kinderwunsch.com  
www.kinderwunsch.com

Zentrum für Kinderwunschbehandlung und  
Pränataldiagnostik Minden  
Dr. med. Dipl.-Biochem. Onno Buurman,  
Dr. med. Michael Dumschat,  
Dr. med. Ralf Menkhaus,  
Dr. med. Barbara Heidecker -privat-  
Simeonsplatz 17  
32423 Minden  
Tel. 0571/972 60 0, Fax -972 60 99  
Info@kinderwunsch-minden.net  
www.kinderwunsch.net

BIF - Bielefelder Institut für  
Fortpflanzungsmedizin  
Frau Dr. Beate Harms, Dr. Nabaz Baban  
Teutoburgerstr. 50  
33604 Bielefeld  
Tel. 0521/581 3277, Fax -581 3295  
bif@klinikumbielefeld.de  
www.klinikumbielefeld.de

Bielefeld Fertility Center  
Paul A. Ebert, Dr. Karl Völklein,  
Beata Szypajlo  
Zentrum für Reproduktionsmedizin und  
Gynäkologische Endokrinologie  
Werther Str. 266  
33619 Bielefeld  
Tel. 0521/10 10 05, Fax -10 10 79  
praxis@kinderwunsch-bielefeld.de  
www.kinderwunsch-bielefeld.de

MVZ für Reproduktionsmedizin am  
Klinikum Kassel  
Dr. med. Marc Janos Willi,  
Dr. med. Oswald Schmidt,  
Prof. Dr. med. Miguel Hinrichsen  
Mönchebergstr. 41 - 43 (Haus 6 B)  
34125 Kassel  
Tel. 0561/980 29 80, Fax -980 29 81  
info@kinderwunsch-kassel.de  
www.ivf-kassel.de

RepKo - Reproduktionsmedizinisches  
Kompetenzzentrum am Universitäts-  
Klinikum Gießen & Marburg GmbH  
Prof. Dr. med. Peyman Hadji,  
Dr. med. Volker Ziller,  
Dr. med. Berna Seker-Pektas,  
Dr. med. Christina Kliebe  
Baldingerstraße  
35043 Marburg  
Tel. 06421/5861330, Fax -5867070  
Haus 40 - Klinikstr. 33  
35392 Gießen  
Tel. 0641/98545207, Fax -98557099  
www.repko-ukgm.de

Kinderwunschzentrum Mittelhessen  
Dr. med. Amir Hajimohammad,  
Berthold Oels, Marie Theres Otte  
Sportparkstr. 9  
35578 Wetzlar  
Tel. 06441/200 20 20, Fax -200 20 299  
info@ivf-mh.de  
www.ivf-mh.de

gyn-medicum, Zentrum für Kinderwunsch  
Dr. med. Monica Tobler,  
Jana Rostek  
Waldweg 5  
37073 Göttingen  
Tel. 0551/41 337, Fax -41 722  
www.gyn-medicum.de

Kinderwunschzentrum Göttingen  
Dr. Rüdiger Moltrecht,  
Dr. Sabine Hübner,  
Dr. Thomas Welcker,  
Dr. Filiz Sakin-Kaindl,  
Dr. Stephanie Mittmann,  
Dr. Peter Schulzeck  
Kasseler Landstr. 25 A  
37081 Göttingen  
Tel. 0551/99888-0, Fax -99888-99  
info@kiwu-goettingen.de  
www.kiwu-goettingen.de

Kinderwunschzentrum Magdeburg  
Dr. Ingrid Nickel, Dr. Evelyn Richter  
Ulrichplatz 1  
39104 Magdeburg  
Tel. 0391/81140 90, Fax -85204 29  
info@kiwumed.de  
www.kinderwunschzentrum-magdeburg.de

Universitätsklinik f. Reproduktionsmedizin  
und Gynäkologische Endokrinologie  
Prof. Dr. med. J. Kleinstein,  
Dr. med. A. B. Brössner  
G.-Hauptmann-Str. 35  
39108 Magdeburg  
Tel. 0391/67-17390, Fax -67-17389  
juergen.kleinstein@med.ovgu.de  
www.med.uni-magdeburg.de/fml/krge

Interdisziplinäres Kinderwunschzentrum  
Düsseldorf  
Dr. Michael C. W. Scholtes, Ph. D.,  
Dipl.-med. Kersten Marx,  
PD Dr. med. Stefan Kissler,  
Frau Dr. med. Petra Hubert,  
Frau Dr. med. Selma Yildirim,  
Dr. med. Sebastian Pfeiffer  
Völklinger Str. 4  
40219 Düsseldorf  
Tel. 0211/90 197-0, Fax -90 197-50  
Scholtes@ivf-duesseldorf.de  
www.ivf-duesseldorf.de

UniKid Universitäres interdisziplinäres  
Kinderwunschzentrum Düsseldorf  
Prof. Dr. med. Jan-S. Krüssel,  
Priv.-Doz. Dr. med. Alexandra Hess,  
Dr. med. Barbara Mikat-Drozdzyński,  
Dr. med. Daniel Fehr,  
Dr. med. Tanja Freundl-Schütt,  
Dr. med. Andrea Schanz,  
Sonja Schu,  
Dr. rer. nat. Dunja Baston-Büst,  
Dr. rer. nat. Jens Hirchenhain  
Moorenstraße 5  
40225 Düsseldorf  
Tel. +49 211/810 40 60, Fax -811 67 87  
info@unikid.de  
www.unikid.de

Kinderwunschzentrum  
Mönchengladbach/Krefeld (Niederrhein)  
Dres. Georg Döhmen & Thomas Schalk  
Von-Groote-Str. 175  
41066 Mönchengladbach  
Tel. 02161/49686-0, Fax -49686-19  
info@kindwunsch.de  
www.kindwunsch.de

green-ivf; Grevenbroicher Endokrinolo-  
gikum & IVF-Zentrum  
Dr. J. Tigges, Dr. K. Friol, PD Dr. Ch. Gnoth  
Rheydter Str. 143  
41515 Grevenbroich  
Tel. 02181/4915-13, Fax -4915-34  
praxis@green-ivf.de  
www.green-ivf.de

Institut für Gynäkologische Endokrinologie  
und Reproduktionsmedizin  
- Bergisches Kinderwunschzentrum -  
Dr. med. Johannes Luckhaus,  
Dr. med. Anke Beerkotte  
Elberfelder Straße 49  
42859 Remscheid  
Tel. 02191/79192-0, Fax -79192-39  
mail@kinderwunsch-remscheid.de  
www.kinderwunsch-remscheid.de

Kinderwunschzentren Dortmund u. Siegen  
MVZ Partnerschaft  
Prof. Dr. med. Stefan Dieterle,  
Dr. med. Andreas Neuer,  
Prof. Dr. med. Robert Greb  
Olpe 19  
44135 Dortmund  
Hermelsbacher Weg 41  
57072 Siegen  
Tel. 0231/557 54 50, Fax -557 54 599  
Tel. 0271/7701-810, Fax -7701-8120  
info@ivf-dortmund.de  
info@kinderwunschzentrum.org

VITRO-MED Kinderwunschzentrum Bochum  
Yvonne Giesner  
Hellweg 2  
44787 Bochum  
Tel. 0234/155 24, Fax -685 479  
info@vitro-med.de  
www.vitro-med.de

NOVUM - Zentren für Reproduktionsmedizin  
Essen - Duisburg  
Prof. Dr. Thomas Katzorke,  
Dr. med. Susanne Wohlers,  
Prof. Dr. Peter Bielfeld  
Akazienallee 8 - 12  
45127 Essen  
Friedrich-Wilhelm-Straße 71  
47051 Duisburg  
Tel. 0201/29429 0, Fax -29429 14  
info@ivfzentrum.de

Reprovita Recklinghausen  
Dr. med. C. Pitone  
Kemnastr. 3a  
45657 Recklinghausen  
Tel. 02361/904 188 0, Fax -904 188 41  
info@reprovita.de  
www.reprovita.de

Kinderwunschpraxis Gelsenkirchen  
Dr. med. Ute Czeromin,  
Dr. med. Ina Walter-Göbel,  
Dr. med. Kathrin Fißeler  
Munscheidstraße 14  
45886 Gelsenkirchen  
Tel. 0209/167-1470, Fax -167-1471  
info@kinderwunsch-gelsenkirchen.de  
www.kinderwunsch-gelsenkirchen.de

Fertility Center Münsterland  
Dr. med. Ulrich Hilland  
Crispinusstr. 12  
46399 Bocholt  
Tel. 02871/23 943 43, Fax -23 943 44  
praxis@fcm-net.de  
www.ivf-bocholt.de

Kinderwunschpraxis an der Promenade  
Mempel & Stratmann  
Dr. med. Andrea Mempel,  
Susanne Stratmann,  
Dr. rer. nat. Melanie Rickert-Föhring  
Von-Vincke-Str. 14  
48143 Münster  
Tel. 0251/414 312-0, Fax -414 312-20  
willkommen@kinderwunsch-promenade.de  
www.kinderwunsch-promenade.de

MVZ Hormon- und Kinderwunschzentrum  
Münster GmbH  
Dr. Dr. med. Lutz Belkien,  
Dr. med. Caroline Niehoff,  
Prof. Dr. med. Axel Kamischke,  
Dr. med. Juliane Burchard,  
Dr. Sylvia Görsdorf-Kimmel,  
Dr. Günter Renk  
Hötteweg 5 - 7  
48143 Münster  
Tel. 0251/482 67 0, Fax -482 67 77  
info@kinderwunschtherapie.de  
www.kinderwunschtherapie.de

Universitäres Kinderwunschzentrum Münster  
Bereich Assistierte Reproduktionsmedizin  
Dr. med. Andreas Schüring,  
Klinik und Poliklinik für Frauenheilkunde  
und Geburtshilfe  
Univ.-Prof. Dr. med. Ludwig Kiesel,  
Centr. f. Reproduktionsmedizin u. Andrologie  
Prof. Dr. med. Sabine Kliesch  
Universitätsklinikum Münster  
Albert Schweitzer Campus I, Gebäude D 11  
48149 Münster  
Tel. 0251/83-58280, Fax -83-56497  
info-kinderwunsch@ukmuenster.de  
www.klinikum.uni-muenster.de

Zentr. f. Kinderwunschbehandlung Osnabrück  
Irene Coordes, Dr. med. Manfred Schneider  
Rheiner Landstr. 93 - 95  
49078 Osnabrück  
Tel. 0541/40 45 00, Fax -40 45 040  
info@kinderwunsch123.de  
www.kinderwunsch123.de

Gemeinschaftspraxis Frauenheilkunde und  
Reproduktionsmedizin  
Dr. med. Dieter Struller,  
Dr. med. Christof Etien  
Graf-Salm-Straße 10  
50181 Bedburg  
Tel. 02272/77 78, Fax -77 73  
info@kinderwunsch-erft.de  
www.kinderwunsch-erft.de

PAN Institut für Endokrinologie und  
Reproduktionsmedizin  
Dr. Stefan Palm, Dr. Irene Pütz,  
Dr. Mirko Dannhof, Priv.-Doz. Dolores Foth  
PAN-Klinik  
Zeppelinstraße 1  
50667 Köln  
Tel. 0221/2776 229, Fax -2776 201  
repro@pan-klinik.de  
www.fertilitycenter-koeln.de

Uniklinik Köln, Klinik und Poliklinik für  
Frauenheilkunde und Geburtshilfe  
Dr. G. Rahimi, Dr. C. Moers, I. Orth  
Kerpener Straße 34  
50931 Köln

Kinderwunschzentrum Köln  
Praxis und Klinik Schönhauserstraße  
Dr. med. Markus Merzenich  
Schönhauser Str. 3  
50968 Köln  
Tel. 0221/340 30 70  
mmerzenich@kinderwunschzentrum-koeln.de  
Kinderwunschzentrum  
Eva Schwahn  
Schönhauser Str. 3  
50968 Köln  
Tel. 0221/340 22 80, Fax -340 60 17  
info@wunschkind-koeln.de  
www.wunschkind-koeln.de

Universitäts-Frauenklinik f. Gynäkologische  
Endokrinologie und Reproduktionsmedizin  
Med. Fakultät der RWTH Aachen  
Prof. Dr. med. Joseph Neulen,  
Dr. med. Benjamin Rösing,  
Dr. rer. nat. Ute Weißenborn  
Pauwelsstraße 30  
52074 Aachen  
Tel. 0241/808 8971, Fax -808 2518  
gyn-endokrinologie@ukaachen.de  
www.gyn-endokrinologie.ukaachen.de

Frauenarztpraxis mit Schwerpunkt  
Gynäkologische Endokrinologie und  
Reproduktionsmedizin an der Itertalklinik  
Dr. med. Klaus-Michael Grunwald  
Eisenhütte 23  
52076 Aachen  
Tel. 02408/958 499, Fax -958 477  
Kinderwunsch-aachen@t-online.de  
www.kinderwunsch-aachen.de

Abteilung für Gynäkologische Endo-  
krinologie und Reproduktionsmedizin  
Universitätsklinikum Bonn  
Prof. Dr. med. Hans Van der Ven,  
Prof. Dr. med. Katrin Van der Ven,  
Dr. med. Ulrike Bohlen,  
Prof. Dr. rer. nat. Markus Montag  
Sigmund-Freud-Str. 25  
53105 Bonn  
Tel. 0228/2871-9186, Fax -2871-5795  
bettina.sander@ukb.uni-bonn.de  
www.kinderwunsch-uni-bonn.de

Praxisklinik für Gynäkologische Endo-  
krinologie und Reproduktionsmedizin  
Priv.-Doz. Dr. Dr. med. Gernot Prietl  
Theaterplatz 18  
53177 Bonn-Bad Godesberg  
Tel. 0228/3503910, Fax -36 48 92  
ivf@careme.de

Praxisklinik Trier - Zentrum für Gynäkol.  
Endokrinologie & Reproduktionsmedizin  
Dr. med. M. Satari,  
Prof. Dr. med. J. P. Hanker  
Wissenschaftspark (WIP)  
Max-Planck-Str. 15  
54296 Trier  
Tel. 0651/97906-0, Fax -97906-20  
info@kinderwunsch-trier.de  
www.kinderwunsch-trier.de

Kinderwunschzentrum der Universi-  
tätsmedizin Mainz  
Univ.-Prof. Dr. Rudolf Seufert M. Sc.,  
Dr. Christine Skala,  
Dr. Ruth Gomez  
Langenbeckstr. 1  
55101 Mainz  
Tel. 06131/173929, Fax -176625  
seufert@mail.uni-mainz.de  
www.wunschkind-mainz.de

Kinderwunsch Zentrum Mainz  
Dr. med. Robert Emig,  
Dr. med. Silke Mettlin  
Rheinstr. 4  
Fort Malakoff Park  
55116 Mainz  
Tel. 06131/60 30 20, Fax -60 30 210  
arzt@kinderwunschzentrum-mainz.de  
www.kinderwunschzentrum-mainz.de

Kinderwunschzentrum Mittelrhein  
Dr. Josef Beran,  
Dr. Birgit Müller  
Marktstr. 83  
56564 Neuwied  
Zweigstelle Koblenz  
Neustadt 8  
56068 Koblenz  
Tel. +49 2631/3968-0, Fax -3968-29  
info@kinderwunsch-mittelrhein.de  
www.kinderwunsch-mittelrhein.de

Zentrum für Reproduktionsmedizin  
Prof. Dr. Ernst Siebzehnrübl,  
Dr. Anja Weidner  
Hanauer Landstr. 328 - 330  
60314 Frankfurt  
Tel. 069/426077-0, Fax -426077-10  
anmeldung@ivf-ffm.de  
www.ivf-ffm.de

Kinderwunschzentrum Frankfurt am  
Nordwestkrankenhaus  
Prof. Dr. med. E. Merz,  
Dr. med. C. Molitor,  
Dr. med. M.-T. Specketer,  
I. Böhnisch,  
Dr. biol. hom. C. Mehnert  
Steinbacher Hohl 2 - 26  
60488 Frankfurt  
Tel. 069/7601-3579, Fax -7601-3321  
info@kinderwunschzentrum-frankfurt.de  
www.kinderwunschzentrumfrankfurt.de

Fertilitätszentrum und Gynäkologische  
Endokrinologie,  
Klinik für Frauenheilkunde und  
Geburtshilfe  
Johann Wolfgang Goethe-Universität  
Prof. Dr. med. Inka Wiegratz,  
Dr. med. Nicole Sängler,  
Dr. Anna Michaelis  
Theodor-Stern-Kai 7  
60590 Frankfurt am Main  
Tel. +49 69/6301-5518, Fax -6301-4 505  
info.ivf@kgu.de  
www.kgu.de/zfg

Kinderwunsch- und Endometriosezentrum  
am Büsing Park  
Dr. Konstantin Manolopoulos  
Herrnstr. 51  
63065 Offenbach  
Tel. 069/80 90 7571, Fax -80 90 7573  
info@offenbach-kinderwunsch.de

Kinderwunschzentrum Darmstadt  
Prof. Dr. med. G. Leyendecker,  
Dr. med. A. Bilgicyildirim,  
Dr. med. M. Inacker,  
Dr. med. H. Engelskirchen-Amran,  
Dr. med. J. Bratengeier,  
Dr. rer. nat. Th. Staff,  
Dr. rer. nat. U. Mischeck  
Bratustraße 9  
64293 Darmstadt  
Tel. 06151/500 98 0, Fax -500 98 500  
info@kwz-da.de  
www.kinderwunschzentrum-da.de

MVZ Kinderwunschzentrum Wiesbaden  
GmbH  
Dr. med. M. Schorsch,  
Dr. med. Th. Hahn,  
Dr. med. G. Adasz,  
K. Schilberz,  
Dr. med. M. Amrani  
Mainzer Str. 98 - 102  
65189 Wiesbaden  
Tel. 0611/97632-0, Fax -97632-10  
info@kinderwunschzentrum-wiesbaden.de  
www.kinderwunschzentrum-wiesbaden.de



Klinik für Frauenheilkunde, Geburtshilfe  
und Reproduktionsmedizin  
Universitätskliniken des Saarlandes  
Prof. Dr. E.-F. Solomayer,  
OA P. Rosenbaum,  
Prof. Dr. Dr. ME Hammadeh,  
Frau Dr. Abel,  
Frau Dr. von Blohn  
Kirrbergerstr. 1  
66421 Homburg/Saar  
Tel. 06841/1628213, Fax -1628061  
ivf@uks.eu  
www.uniklinikum-saarland.de/  
einrichtungen/kliniken\_institute/  
frauenklinik/

Überregionale Gemeinschaftspraxis  
IVF-Saar Saarbrücken-Kaiserslautern  
Dr. med. L. Happel,  
Andreas Giebel,  
Najib Nassar,  
Dr. med. M. Otte,  
Dr. rer. medic. M. Greuner  
Europaallee 15  
66113 Saarbrücken  
Maxstr. 13  
67659 Kaiserslautern  
Tel. +49 681/936 320, Fax -936 3210  
Zentrum@ivf-saar.de  
www.ivf-saar.de

Kinderwunschzentrum Ludwigshafen  
Dr. med. Tobias Schmidt,  
Dr. med. Elena Hartschuh,  
Dr. med. Claudia Schmidt,  
Dr. rer. nat. Nicole Motzkus  
Ludwigstr. 54 b  
67059 Ludwigshafen  
Tel. 0621/592 98 688, Fax -592 98 690  
info@kinderwunsch-lu.de  
www.kinderwunschzentrum-ludwigshafen.de

Kinderwunschzentrum Mannheim  
Universitätsmedizin Mannheim  
Prof. Dr. med. M. Sütterlin  
Theodor Kutzer Ufer 1 - 3  
68167 Mannheim  
Tel. 0621/383 3638, Fax -383 3814  
IVFLabor@umm.de  
www.umm.de/64.0.html

Viernheimer Institut für Fertilität  
PD. Dr. med. Stefanie Volz-Köster,  
Dr. med. Christina Nell,  
Dr. sc. hum. Brigitte Hauff  
Karl-Marx-Str. 43  
68519 Viernheim  
Tel. 06204/70 36 00, Fax -70 36 05  
info@vif-kinderwunsch.de  
www.vif-kinderwunsch.de

Kinderwunschzentrum Heidelberg  
Dr. Waltraud Parta-Kehry,  
Dr. Suat Parta,  
Friederike Tesarz,  
Dr. Daniela Seehaus,  
Dr. Christina Thöne  
Römerstr. 3  
69115 Heidelberg  
Tel. 06221/89300-0, Fax -89300-20  
info@kwz-hd.de  
www.kwz-hd.de

Abt. für Gynäkologische Endokrinologie  
und Fertilitätsstörungen  
Universitätsklinikum Heidelberg  
Prof. Dr. T. Strowitzki, Prof. Dr. B. Toth,  
Dr. S. Rösner, Dr. A. Germeyer,  
T. Göggel, Dr. M. Goeckenjan,  
Dr. L. Wallwiener  
Voßstr. 9  
69115 Heidelberg  
Tel. 06221/56 79 10, Fax -56 40 99  
thomas.strowitzki@med.uni-heidelberg.de  
www.klinikum.uni-heidelberg.de/  
kinderwunschambulanz.583.0.html

Kinderwunsch-Zentrum Stuttgart  
Praxis Villa Haag  
Dr. med. D. B. Mayer-Eichberger  
Herdweg 69  
70174 Stuttgart  
Tel. 0711/22 10 84, Fax -22 10 85  
info@kinderwunschpraxis.de  
www.kinderwunschpraxis.de

Gynäkologie und Reproduktionsmedizin  
Dr. med. Fred Maleika,  
Dipl. Biol. Dr. rer. nat. Silvia Harrer  
Lessingstr. 9  
70174 Stuttgart  
Tel. 0711/226 13 44, Fax -226 30 48  
drmaleika@aol.com

Kinderwunsch-Zentrum Stuttgart  
Praxis Prof. Dr. Dieter H. A. Maas und  
Dr. med. F. Gagsteiger  
Im Königsbau  
Friedrichstraße 45  
70174 Stuttgart  
Tel. 0711/997 806-0, Fax -997 806-10  
info@kidz-stuttgart.de  
www.kidz-ulm.de

Frauenarztpraxis mit Tagesklinik  
Reproduktionsmedizin  
Univ.-Prof. Dr. med. Ute Fuchs  
Kornbergstr. 23  
70176 Stuttgart  
Tel. 0711/22 62 728, Fax -22 62 738  
Prof.UteFuchs@t-online.de  
www.kinder-wunsch-bw.de

Kinderwunschzentrum Ludwigsburg  
Dr. med. Andreas Ott  
Pflugfelder Str. 22  
71636 Ludwigsburg  
Tel. 07141/68876-0, Fax -68876-9  
info@kiwu-lb.de  
www.kiwu-lb.de

KinderwunschPraxis Dres. med. Göhring  
Hagellocher Weg 63  
72070 Tübingen  
Tel. 07071/94663-0, Fax -94663-99  
goehring@kinderwunschpraxis.com  
www.kinderwunschpraxis.com

IVF-Zentrum der Universitätsfrauenklinik  
Tübingen  
Dr. med. Barbara Lawrenz,  
Dr. med. Eva Neunhoeffer,  
Dr. med. Melanie Henes  
Calwerstr. 7  
72076 Tübingen  
Tel. 07071/29 831 17, Fax -29 2250  
Barbara.Lawrenz@med.uni-tuebingen.de  
www.uni-frauenklinik-tuebingen.de

Kinderwunsch-Zentrum Aalen  
Praxis Dr. med. Rainer Rau  
Dr. med. Rainer Rau,  
Dr. med. Birgit Schröppel,  
Dr. rer. nat. Roland Eid  
Weidenfelder Str. 1  
73430 Aalen  
Tel. 07361/620 21, Fax -620 26  
rau@kinderwunsch-aalen.de  
www.kinderwunsch-aalen.de

IVF-Zentrum Esslingen  
Dr. med. Johann Emil Costea,  
Dipl. Ing. Luminitza Costea,  
Dr. rer. nat. Michael Troge  
Marktplatz 5/1  
73728 Esslingen  
Tel. 0711/31059-160, Fax -31059-161  
ivfcostea@t-online.de  
www.ivf-praxis.com

Centrum für Kinderwunsch Pforzheim  
Verena Peuten  
Zerrennerstr. 22 - 24  
75172 Pforzheim  
Tel. 07231/280 82 80, Fax -280 82 888  
info@kinderwunsch-pforzheim.de  
www.kinderwunsch-pforzheim.de

Karlsruher IVF-Programm,  
AG für Fortpflanzungsmedizin  
H. J. Gräber, Dr. F. Tetens  
Laborärzte Dr. Ehrfeld + Kollegen  
Humangenetik Dr. Schlüter, Dr. Schüler  
Kaiserstr. 142 - 144  
76133 Karlsruhe  
Tel. 0721/82 46 700, Fax -29 527  
info@ivf-programm.de  
www.ivf-programm.de

Kinderwunschzentrum der Klinikum  
Mittelbaden MVZ GmbH  
Prof. Dr. med. Wolfgang Küpker,  
Dr. med. Peter Hartmann,  
Dr. med. Markus Knoll,  
Dr. s.c. hum. Wolfgang Bernart (Dipl.-Biol.)  
Engelstraße 39  
76437 Rastatt  
Tel. 07222/59 60 282, Fax 07222 59 60 284  
info@kinderwunschzentrum-mittelbaden.de  
www.kinderwunschzentrum-mittelbaden.de

Centrum für Gynäkologische Endokrinologie  
& Reproduktionsmedizin Freiburg  
(CERF)  
Dr. med. Rudolf Weitzell,  
Dr. med. Maria Thiemann,  
PD Dr. med. Birgit Wetzka,  
Prof. Dr. med. Franz Geithövel  
Bismarkallee 7 F  
79098 Freiburg  
Tel. 0761/207 430, Fax -321 11  
info@kinderwunsch-hormone.de  
www.kinderwunsch-hormone.de

Endokrinologie und Reproduktionsmedizin  
Uni Frauenklinik Freiburg  
Dr. med. Hanjalic-Beck, Dr. med. Friebe,  
Dipl. Biol. Halbe  
Hugstetter Str. 55  
79106 Freiburg  
Tel. 0761/270-31870, Fax -270-30370  
stephanie.friebe@uniklinik-freiburg.de  
www.uniklinik-freiburg.de/frauenklinik/  
live/endokrinologie.html

Zentrum für Reproduktionsmedizin  
München  
Dr. med. W. Bollmann,  
Dr. Th. Brückner,  
Dr. med. U. Noss  
Tal 11  
80331 München  
Tel. 089/242295-0, Fax -242295-60  
info@ivf-bbn.de  
www.ivf-bbn.de

Zentrum für Gynäkologische Endokrinologie und Reproduktionsmedizin am Klinikum der Universität München - Innenstadt  
Prof. Dr. med. Markus S. Kupka,  
Dr. rer. nat. Panos Papadopoulos  
Maistr. 11  
80337 München  
Tel. 089/5160-4214, Fax -5160-4918  
nachricht@ivf-maistrasse.de  
www.ivf-maistrasse.de

Hormon Zentrum München  
Dr. med. H. Lacher,  
Dr. med. J. Puchta,  
Dr. med. S. Michna,  
PD Dr. med. H.-U. Pauer  
Westendstr. 193 - 195  
80686 München  
Tel. 089/547 041-0, Fax -547 041-34  
info@hormonzentrum.de  
www.hormonzentrum.de

Kinderwunsch Centrum München-Pasing  
Dr. med. Klaus Fiedler,  
Dr. med. Irene von Hertwig,  
Dr. med. Gottfried Krüsmann,  
Prof. Dr. Dr. med. habil Wolfgang Würfel,  
Ina Laubert,  
Dr. med. Claudia Santjohanser,  
Sabine Völker,  
Osama Meri,  
Dr. med. Jan Krüsmann  
Lortzingstr. 26  
81241 München  
Tel. 089/244 144-0, Fax -244 144-42  
info@ivf-muenchen.de  
www.ivf-muenchen.de

Hormon- und Kinderwunsch-Zentrum der LMU München-Großhadern  
Leiter:  
Prof. Dr. Christian J. Thaler  
Leitende Embryologin:  
Dr. rer. nat. Viktoria von Schönfeldt  
Klinik und Poliklinik der Frauenheilkunde und Geburtshilfe  
Direktor:  
Prof. Dr. med. Klaus Friese  
Marchioninstr. 15  
81377 München  
Tel. 089/7095-6825, Fax -7095-3844  
www.kinderwunsch-uni-muenchen.de

A. R. T. Bogenhausen  
Prof. Dr. med. Dieter Berg,  
Dr. med. Bernd Lesoine,  
Dr. rer. nat. Ulrike Berg  
Prinzregentenstr. 69  
81675 München  
Tel. 089/41424-00, Fax -41424-011  
info@ivf-muenchen.com  
www.ivf-muenchen.com

Kinderwunsch Centrum Chiemsee  
Dr. med. Susann Böhm,  
Dr. med. Matthias Lehnert,  
Gaby Gilbhard, Dipl. Biologin  
Hochriesstr. 21  
83209 Prien am Chiemsee  
Tel. 08051/5050, Fax -63499  
info@kinderwunsch-chiemsee.de  
www.kinderwunsch-chiemsee.de

Kinderwunschzentrum Augsburg  
Dr. med. T. Bauer, Dr. med. K.-F. Hiller,  
Dr. med. H. Kraus  
Prinzregentenstr. 25/III  
86150 Augsburg  
Tel. 0821/502 7888, Fax -502 7878  
info@ivf-augsburg.de  
www.ivf-augsburg.de

KWK - KinderWunschKempten  
Zentrum für Reproduktionsmedizin  
Klinik für Frauenheilkunde und  
Geburtshilfe - Klinikum - Kempten gGmbH  
Prof. Dr. med. Ricardo Felberbaum,  
OA Gerhard Allgayer, Tanja Zahn,  
Dipl. Biol. Mohammad Kousehlar  
Robert-Weixler Str. 50  
87439 Kempten  
Tel. 0831/530-3393, Fax -530-3457  
Ricardo.Felberbaum@Klinikum-Kempten.de  
www.kinderwunsch-kempten.de

Praxisklinik Frauenstraße Ulm  
Prof. Dr. med. Karl Sterzik,  
Dr. med. Erwin Strehler  
Frauenstraße 51  
89073 Ulm  
Tel. 0731/96 651-0, Fax -96 651-30  
info@kinderwunsch-ulm.de  
www.kinderwunsch-ulm.de

Sektion für Gynäkologische Endokrinologie und Reproduktionsmedizin, Universität Ulm  
Dr. K. Hancke, Dr. B. Seemann,  
Dr. E. Isachenko, Dr. B. Rosenbusch  
Prittowitzstr. 43  
89075 Ulm  
Tel. 0731/500-58676, Fax -500-58664  
Repromed.UFK@uniklinik-ulm.de  
www.uniklinik-ulm.de/ivf

Kinderwunsch-Zentrum Ulm  
Praxis Dr. med. F. Gagsteiger  
Einsteinstr. 59  
89077 Ulm  
Tel. 0731/15159-0, Fax -15159-15  
info@kwz-ulm.de  
www.kidz-ulm.de

Kinderwunsch- und Frauen-Hormon-Centrum  
Dr. Joachim Neuwinger,  
Dr. Barbara Munzer-Neuwinger,  
Prof. Dr. Peter Licht  
Agnesgasse 2 - 4  
90403 Nürnberg  
Tel. 0911/23 55500, Fax -23 55516  
aerzte@kinderwunschzentrum-nuernberg.de  
www.kinderwunschzentrum-nuernberg.de

Kinderwunschzentrum Erlangen  
Dr. med. Jan van Uem  
Reproduktionsmedizin  
Michael-Vogel-Str. 1e  
91052 Erlangen  
Tel. 09131/8095-0, Fax -8095-30  
vanuem@web.de  
www.vanuem.com

Gemeinschaftspraxis der Frauenärzte  
Dres. Hamori-Behrens-Hammel  
Dr. med. Miklos Hamori,  
Dr. med. Rolf Behrens,  
Dr. med. Andreas Hammel  
Nürnberger Str. 35  
91052 Erlangen  
Tel. 09131/89 520, Fax -205 410  
info@ivf-erlangen.de  
www.ivf-erlangen.de

Universitäts-Fortpflanzungszentrum Franken (UFF) des Univ.-Klinikums Erlangen  
Prof. Dr. med. Matthias W. Beckmann,  
PD Dr. med. Andreas Müller,  
Prof. Dr. rer. nat. Ralf Dittrich (Biologe)  
Universitätsstr. 21- 23  
91054 Erlangen  
Tel. 09131/85-33553, Fax -85-33552  
fk-uff@uk-erlangen.de  
www.reproduktionsmedizin.uk-erlangen.de

Kinderwunschzentrum Regensburg  
Prof. Dr. med. Bernd Seifert,  
Prof. Dr. med. Monika Bals-Pratsch  
Hemauer Str. 1  
93047 Regensburg

Kinderwunschzentrum Niederbayern  
Dr. H. J. Kroiss,  
Dr. A. Bräuker,  
Dr. E. Bernhardt,  
Heike Vornehm,  
Edith Wilhelm  
Stadtfeldstr. 50  
94469 Deggendorf  
Tel. 0991/297 99 332, Fax -297 99 331  
dr.kroiss@ivf-bayern.de  
www.ivf-bayern.de

Klinik am Hofgarten  
Kinderwunschzentrum Bayreuth  
Dr. Dr. S. Todorow  
Richard-Wagner-Straße 34- 36  
95444 Bayreuth  
Tel. 0921/745 444 0, Fax -745 444 10  
info@ivf-bayreuth.de  
www.ivf-bayreuth.de

Zentrum für Kinderwunsch, Genetik und Pränataldiagnostik  
Dr. med. Reinhard Mai,  
Dr. med. Wolfgang Schmitt,  
Dr. med. Lore Mulfinger  
Juliuspromenade 7  
97070 Würzburg  
Tel. 0931/32 12 30, Fax -32 12 377  
kontakt@drs-mai-schmitt-mulfinger.de  
www.drs-mai-schmitt-mulfinger.de

Universitäts-Frauenklinik Würzburg  
Zentrum f. gynäkologische Endokrinologie und Reproduktionsmedizin  
Dr. Schwab,  
PD Dr. Rieger,  
Fr. Dr. Staib,  
Fr. Dr. Morr,  
Dr. Bernar,  
Fr. Dr. Segerer  
Josef-Schneider-Str. 4  
97080 Würzburg  
Tel. 0931/201-25619  
kinderwunsch@klinik.uni-wuerzburg.de  
www.frauenklinik.uni-wuerzburg.de



# Mitteilungen aus der Redaktion

Besuchen Sie unsere Rubrik

## [Medizintechnik-Produkte](#)



Neues CRTD Implantat  
Intica 7 HF-T QP von Biotronik



Artis pheno  
Siemens Healthcare Diagnostics GmbH



Philips Azurion:  
Innovative Bildgebungslösung

Aspirator 3  
Labotect GmbH



InControl 1050  
Labotect GmbH

## e-Journal-Abo

Beziehen Sie die elektronischen Ausgaben dieser Zeitschrift hier.

Die Lieferung umfasst 4–5 Ausgaben pro Jahr zzgl. allfälliger Sonderhefte.

Unsere e-Journale stehen als PDF-Datei zur Verfügung und sind auf den meisten der marktüblichen e-Book-Readern, Tablets sowie auf iPad funktionsfähig.

## [Bestellung e-Journal-Abo](#)

### Haftungsausschluss

Die in unseren Webseiten publizierten Informationen richten sich **ausschließlich an geprüfte und autorisierte medizinische Berufsgruppen** und entbinden nicht von der ärztlichen Sorgfaltspflicht sowie von einer ausführlichen Patientenaufklärung über therapeutische Optionen und deren Wirkungen bzw. Nebenwirkungen. Die entsprechenden Angaben werden von den Autoren mit der größten Sorgfalt recherchiert und zusammengestellt. Die angegebenen Dosierungen sind im Einzelfall anhand der Fachinformationen zu überprüfen. Weder die Autoren, noch die tragenden Gesellschaften noch der Verlag übernehmen irgendwelche Haftungsansprüche.

Bitte beachten Sie auch diese Seiten:

[Impressum](#)

[Disclaimers & Copyright](#)

[Datenschutzerklärung](#)