

Journal für

# Reproduktionsmedizin und Endokrinologie

– Journal of Reproductive Medicine and Endocrinology –

Andrologie • Embryologie & Biologie • Endokrinologie • Ethik & Recht • Genetik  
Gynäkologie • Kontrazeption • Psychosomatik • Reproduktionsmedizin • Urologie



**D.I.R-Annual 2015**

Blumenauer V, Czeromin U, Fiedler K, Gnoth C, Happel L

Krüssel JS, Kupka MS, Tandler-Schneider A

*J. Reproduktionsmed. Endokrinol* 2016; 13 (5), 188-223

[www.kup.at/repromedizin](http://www.kup.at/repromedizin)

Online-Datenbank mit Autoren- und Stichwortsuche

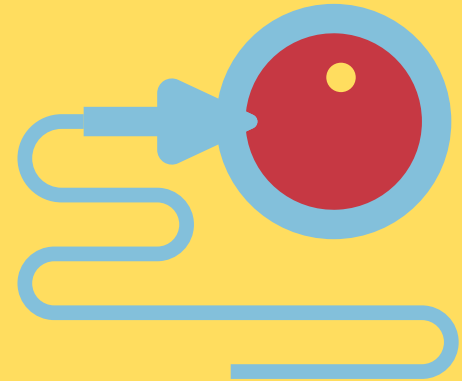
Offizielles Organ: AGRBM, BRZ, DVR, DGA, DGGEF, DGRM, D-I-R, EFA, OEGRM, SRBM/DGE

Indexed in EMBASE/Excerpta Medica/Scopus

Krause & Pachernegg GmbH, Verlag für Medizin und Wirtschaft, A-3003 Gablitz

SAVE THE DATE

**11. DVR KONGRESS**  
27.11.-29.11.2025



Messe und Congress Centrum  
Halle Münsterland **MÜNSTER**

Prof. Dr. rer. nat. Nina Neuhaus  
Prof. Dr. med. Frank Tüttelmann  
Prof. Dr. med. Volker Ziller

**From Bench to Bedside and Back**

<b>Preface</b>	
<b>D.I.R Annual 2015 – The German IVF-Registry</b>	<b>189</b>
V. Blumenauer, U. Czeromin, K. Fiedler, C. Gnoth, L. Happel, J.-S. Krüssel, M.S. Kupka, A. Tandler-Schneider	
<b>Responsible for this Edition</b>	
<b>190</b>	
<b>Tables</b>	
<b>Number of Treatments in 2015</b>	<b>191</b>
<b>Registry Participants 1982–2015</b>	<b>191</b>
<b>Total Number of Treatment Cycles 2015</b>	<b>192</b>
<b>Number of Ovum Pick-up Cycles (OPC) 1982–2015)</b>	<b>192</b>
<b>Number of Treatments 1982–2015</b>	<b>193</b>
<b>Summary of Statistics in Brief 2015</b>	<b>193</b>
<b>Summary of Statistics in Brief 2014</b>	<b>193</b>
<b>D.I.R Statistics in Brief 2015</b>	<b>194</b>
<b>D.I.R Statistics in Brief 2014</b>	<b>195</b>
<b>Clinical Pregnancies (CP), Miscarriages (MISC), Ectopic Pregnancies (EP), and Still Births (SB) 2014</b>	<b>196</b>
<b>Multiple Births 2014</b>	<b>197</b>
<b>Births as a Function of Number of Embryos Transferred and Age Groups 2000–2014</b>	<b>198</b>
<b>Births as a Function of Number of Embryos Transferred and Treatment Method 2000–2014</b>	<b>199</b>
<b>Fertilisation Rate 2015</b>	<b>200</b>
<b>Embryos per Transfer and Children After IVF, ICSI 1997–2014</b>	<b>200</b>
<b>Distribution of Indications 2015</b>	<b>201</b>
<b>IVF and ICSI – Results 2014</b>	<b>202</b>
<b>TESE and Cryo Transfer – Results 2014</b>	<b>203</b>
<b>Pregnancy Rate as a Function of Female Age 2014 – IVF</b>	<b>204</b>
<b>Pregnancy Rate as a Function of Female Age 2014 – ICSI</b>	<b>205</b>
<b>Pregnancy Rate and Ongoing Pregnancy as a Function of Female Age 2010–2014 – IVF</b>	<b>206</b>
<b>Pregnancy Rate and Ongoing Pregnancy as a Function of Female Age 2010–2014 – ICSI</b>	<b>207</b>
<b>Clinical Pregnancies (CP)/ET as a Function of the Number of Embryos Transferred and Age Groups 2015 – IVF</b>	<b>208</b>
<b>Clinical Pregnancies (CP)/ET as a Function of the Number of Embryos Transferred and Age Groups 2015 – ICSI</b>	<b>208</b>
<b>Clinical Pregnancies (CP)/ET as a Function of the Number of Embryos Transferred and Age Groups 2015 – Kryo-ET</b>	<b>209</b>
<b>Clinical Pregnancies (CP)/Fresh Transfer as a Function of Embryo Quality 2015</b>	<b>209</b>
<b>Clinical Pregnancies (CP)/Frozen Transfer as a Function of Embryo Quality 2015</b>	<b>210</b>
<b>Miscarriage (MISC) Rates as a Function of Female Age and Number of Embryos Transferred 2014</b>	<b>210</b>
<b>Clinical Pregnancy Rate (CPR) as a Function of the Stimulation Protocol 2015</b>	<b>211</b>
<b>Mean Age for Women and Men 1997–2015</b>	<b>212</b>
<b>Children Born 1997–2014 – Total (IVF, ICSI, IVF/ICSI, Cryo Transfer)</b>	<b>213</b>
<b>Children as a Function of Week of Gestation (WoG) and Birth Weight (BW) 2014</b>	<b>214</b>
<b>Ovarian Hyperstimulation Syndrome (OHSS) as a Function of the Stimulation Protocol 2015</b>	<b>215</b>
<b>Complications as a Function of Ovum Pick-up (OPU) 2015</b>	<b>215</b>
<b>List of D.I.R Registry Participants 2015</b>	
<b>216</b>	
<b>Sponsors</b>	
<b>223</b>	

---

# Preface

## D.I.R Annual 2015 – The German IVF-Registry

V. Blumenauer, U. Czeromin, K. Fiedler, C. Gnoth, L. Happel, J.-S. Krüssel, M.S. Kupka, A. Tandler-Schneider

---

Once again it is our great pleasure to present the 2015 annual report of the data collected by the German IVF-Registry (D.I.R). The Registry looks back onto more than 30 years of diligent data collection, extraction, and evaluation.

Since 1996, the German IVF-Registry has been electronically collecting data for each initiated treatment cycle. Meanwhile, more than 1.2 million ART cycles (ART: Assisted Reproduction Technology) have been documented in the database. The prospective documentation as well as the cycle-by-cycle data collection are of particular value and make the German IVF-Registry unique world-wide.

By August 30, 2016, 130 of the 134 centers organized in the non-profit federal association D.I.R had reported their data to the German IVF-Registry. Because of technical hurdles in the centers, three could not export their data.

97,796 cycles have been documented. A total of 57,998 women were treated in 2015, resulting in a mean of 1.7 cycles per woman. We are happy to note that despite the grave changes in reimbursement regulations in 2004, the number of treatment cycles has since been increasing steadily. For IVF and ICSI, the pregnancy rate per embryo transfer was 31.9% – a slight increase from the 31.2% in 2014.

72.7% of the pregnancies led to a birth. A birth rate of 20.5% per oocyte treatment and 23.5% per embryo transfer has been achieved. For a 25 year old woman, the probability of becoming pregnant WITHOUT any medical assistance averages at 23%. For a 35 year old woman this probability decreases to 16%, according to the [Bundesgesundheitsblatt 2013; 56: 1633–41].

These data demonstrate the high quality of reproductive medicine in Germany, leading to impressive results even under the restrictive legislation: in accordance with the “Embryo Protection Act“ of 1990, the elective single embryo transfer (eSET) is still unlawful in Germany. Egg donation is forbidden as well. Cryopreservation is allowed for usually 2-PN stage oocytes only. The regulation that only a maximum of three embryos may be transferred has certainly led to positive effects. Due to the increasing quality of stimulation, improved oocyte treatment, and changes in transfer technology, the average number of transferred embryos has decreased by more than 25% in fresh cycles since 1997. By transferring no more than an average of 1.86 embryos after IVF as well as ICSI, the doctors for reproductive medicine in Germany have continued to adhere to their responsible approach towards the reduction of multiples.

To improve the documentation of pregnancy outcomes, the quality offensive initiated already for the 2014-data collection, led to a remarkable additional decrease in the lost-for-follow-up rate for 2015: 94.4% pregnancy outcomes have been documented! 62% of the exporting centers have arrived at a documentation rate of more than 95% – a remarkable result. Good and diligent documentation is proof of a highly organized and efficient workflow. The prospective cycle-by-cycle data collection is another quality feature of the German IVF-Registry, a feature that sets the German IVF-Registry apart from any other registry in the world.

The results of the comprehensive data collection in the German IVF-Registry and its reports have been cited in numerous scientific publications, nationally as well as internationally, lending support and impetus to scientific research.

Furthermore, the data have contributed to the continuous improvement of quality within the German centers for reproductive medicine. Physicians, biologists, and patients alike have benefited from the tedious work necessary to collect, export, and evaluate as well as publish the data. Therefore, we express our gratitude to all those involved:

Thank you and keep up the good work!

Prof. Dr. med. Jan-Steffen Krüssel

Dr. med. Ute Czeromin  
President of the Board

Dr. med. Andreas Tandler-Schneider



# Responsible for this Edition

## Deutsches IVF-Register e. V. German IVF Registry

### Members of the Board

Dr. med. U. Czeromin (Chairwoman)  
Prof. Dr. med. J.-S. Krüssel  
Dr. med. Andreas Tandler-Schneider

### Curators

Dipl.-Biol. V. Blumauer  
Dr. med. K. Fiedler  
PD Dr. med. C. Gnoth  
Prof. Dr. med. M. Kupka  
Dr. med. L. Happel

### Past Chairmen

Dr. med. Klaus Bühler (2007–2014)  
Prof. Dr. med. R. Felberbaum (1995–2007)  
Prof. Dr. med. H.-K. Rjosk (1992–1995)  
Prof. Dr. med. F. Lehmann (1982–1992)

### D.I.R. Office

Monika Uszkoreit  
MRU-Consulting GbR  
Chausseestraße 58C, 10115 Berlin  
Fon +49 30 39 800 743  
E-Mail: [geschaeftsstelle@deutsches-ivf-register.de](mailto:geschaeftsstelle@deutsches-ivf-register.de)  
Web: [www.deutsches-ivf-register.de](http://www.deutsches-ivf-register.de)

### D.I.R.-Data Management

Fitzthum & Associates  
Consulting & Technology  
Ickerswarder Straße 34, 40589 Düsseldorf  
Fon +49 211 877 495-41  
Fax +49 211 877 495-10  
E-Mail: [stefan@fitzthum.net](mailto:stefan@fitzthum.net)  
and  
Markus Kimmel  
Kimmelnet  
Mobile: +49 157 383 261 93  
E-Mail: [mmk@kimmelnet.de](mailto:mmk@kimmelnet.de)  
Web: [www.kimmelnet.de](http://www.kimmelnet.de)

### Design and Layout

U&MI Visual Communication  
Dipl.-Des. Soo-Hee Kim  
Fon +49 176 1250 6007  
e-mail [hello@uandmi.de](mailto:hello@uandmi.de)

Copyright D.I.R. Deutsches IVF-Register® 2016

# D.I.R Annual 2015 – Tables

## Number of Treatments in 2015

Centers for IVF-, ICSI-, and Cryo Transfer Treatments



<b>Members of the German IVF-Registry 2015</b>	<b>n= 134</b>	
Registry Participants 2015*	n=130	
Data Received by Deadline Aug 30 2016*	n=130	
Documented Treatment Cycles	n=97,796	(100.0 %)
Plausible	n=96,124	(98.3%)
Prospective (all Cycles)	n=85,529	(89.0%)
Prospective (IVF, ICSI, IVF/ICSI)	n=55,985	(89.3%)
Number of Women Treated**	n=57,998	
<b>Mean Number of Treatment Cycles per Woman</b>	<b>1.7</b>	

## Registry Participants 1982 – 2015

IVF-, ICSI- and Cryo Transfer Treatments



	1982	1986	1990	[ ... ]	2005	2006	2007	2008	2009	2010	2011	2012	2013	2014	2015*
IVF	5	28	53	<i>For values from 1991 to 2004 see <a href="http://www.deutsches-ivf-register.de">www.deutsches-ivf-register.de</a></i>	117	120	118	117	119	121	124	117	128	128	130
ICSI	0	0	0		117	120	118	120	119	124	128	120	130	128	130
Cryo	0	0	0		109	109	112	112	117	120	125	119	130	128	130
<b>Total</b>	<b>5</b>	<b>28</b>	<b>53</b>		<b>117</b>	<b>121</b>	<b>118</b>	<b>120</b>	<b>121</b>	<b>124</b>	<b>128</b>	<b>120</b>	<b>130</b>	<b>128</b>	<b>130</b>

\*) Due to their technical prerequisites, three centers could not export their data

\*\*\*) Base quantity: Total number of women, including implausible treatment cycles

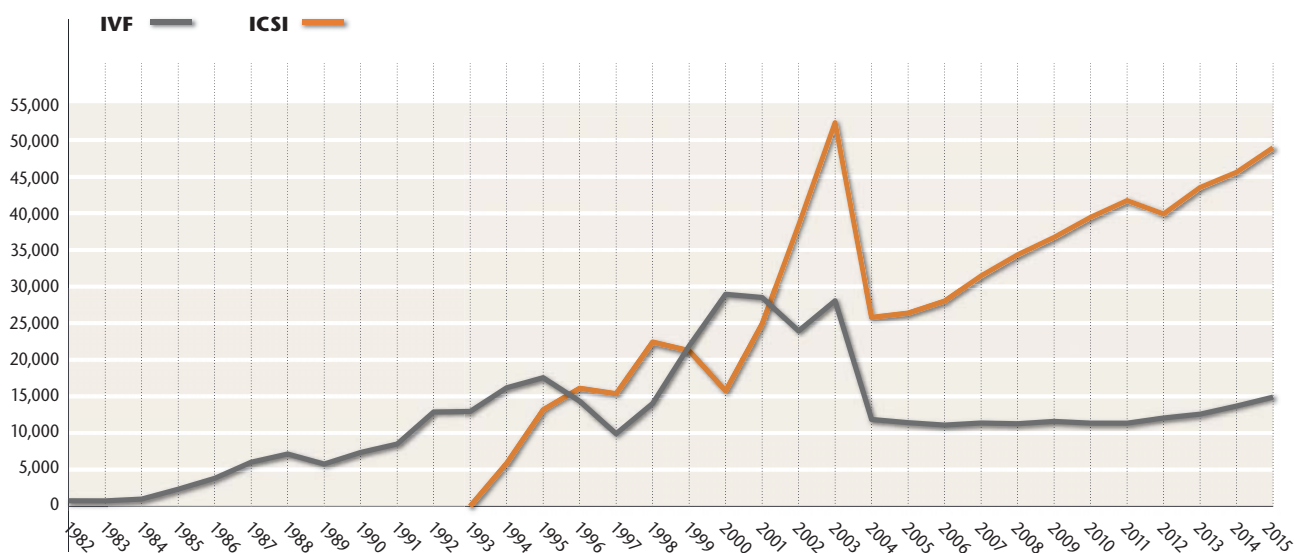
# Total Number of Treatment Cycles 2015

IVF, ICSI, IVF/ICSI, Cryo Transfer – Prospective Data

	IVF	ICSI	IVF/ICSI	Cryo Transfer	No Treatment	Total
n	13,002	41,972	1,011	21,477	8,067	<b>85,529</b>
%	15.2	49.1	1.2	25.1	9.4	<b>100.0</b>

# Number of Ovum Pick-up Cycles (OPU) 1982–2015

IVF, ICSI\* – Prospective and Retrospective Data



	1982	1986	1990	[ ... ]	2002	2003	2004	[ ... ]	2011	2012	2013	2014	2015
IVF	742	3,806	7,343	For values from 1991 to 2001 see <a href="http://www.deutsches-ivf-register.de">www.deutsches-ivf-register.de</a>	23,936	28,058	11,848	For values from 2005 to 2010 see <a href="http://www.deutsches-ivf-register.de">www.deutsches-ivf-register.de</a>	11,341	12,047	12,569	13,675	14,900
ICSI					38,370	52,376	25,785		41,735	39,911	43,523	45,605	48,958
<b>Total**</b>	<b>742</b>	<b>3,806</b>	<b>7,343</b>		<b>62,306</b>	<b>80,434</b>	<b>37,633</b>		<b>53,076</b>	<b>51,958</b>	<b>56,092</b>	<b>59,280</b>	<b>63,858</b>

\*) OPU's leading to an IVF- and/or ICSI oocyte treatment

Where IVF/ICSI is not explicitly mentioned, the treatments were added to ICSI.



# Number of Treatments 1982–2015

IVF, ICSI, IVF/ICSI, Cryo Transfer – Prospective and Retrospective Data

	1982	1986	1990	[ ... ]	2002	2003	2004	[ ... ]	2011	2012	2013	2014	2015
IVF	742	3,806	7,343	For values from 1991 to 2001 see <a href="http://www.deutsches-ivf-register.de">www.deutsches-ivf-register.de</a>	23,936	28,058	11,848	For values from 2005 to 2010 see <a href="http://www.deutsches-ivf-register.de">www.deutsches-ivf-register.de</a>	11,341	12,047	12,569	13,675	14,900
ICSI					37,692	51,389	25,339		40,641	38,897	42,381	44,427	47,779
IVF/ICSI					678	987	446		1,094	1,014	1,142	1,178	1,179
Cryo					14,923	14,265	16,883		19,228	19,293	20,633	21,893	23,470
None*					9,802	11,133	4,928		6,618	6,117	6,708	7,210	8,796
<b>Total**</b>	<b>742</b>	<b>4,201</b>	<b>8,653</b>		<b>87,044</b>	<b>105,854</b>	<b>59,448</b>		<b>78,922</b>	<b>77,368</b>	<b>83,433</b>	<b>88,383</b>	<b>96,124</b>

From 1999 on each initiated cycle is documented.

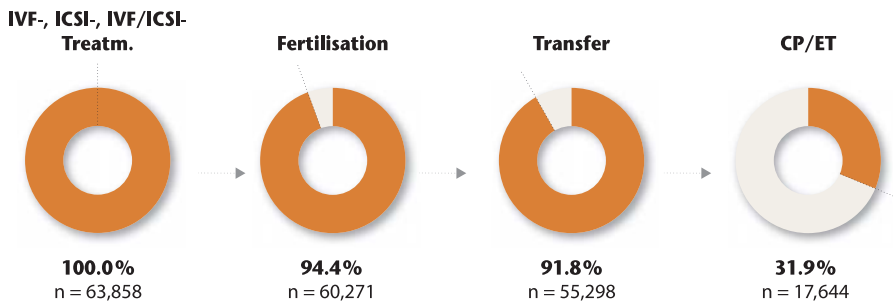
\*) No treatment: treatments aborted prior to oocyte culture

\*\*) "Total" may contain GIFT cases. Documentation has been neglected since 2005 due to lack of statistical relevance

## Summary of Statistics in Brief 2015 – CoD Aug 30 2016



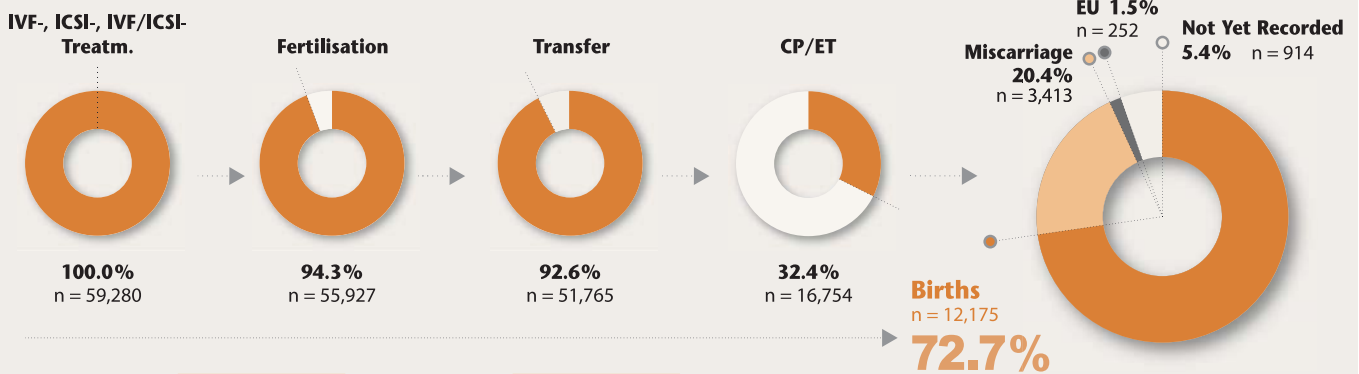
IVF, ICSI and IVF/ICSI – Prospective and Retrospective Data



## Summary of Statistics in Brief 2014 – CoD Aug 30 2016



IVF, ICSI and IVF/ICSI – Prospective and Retrospective Data

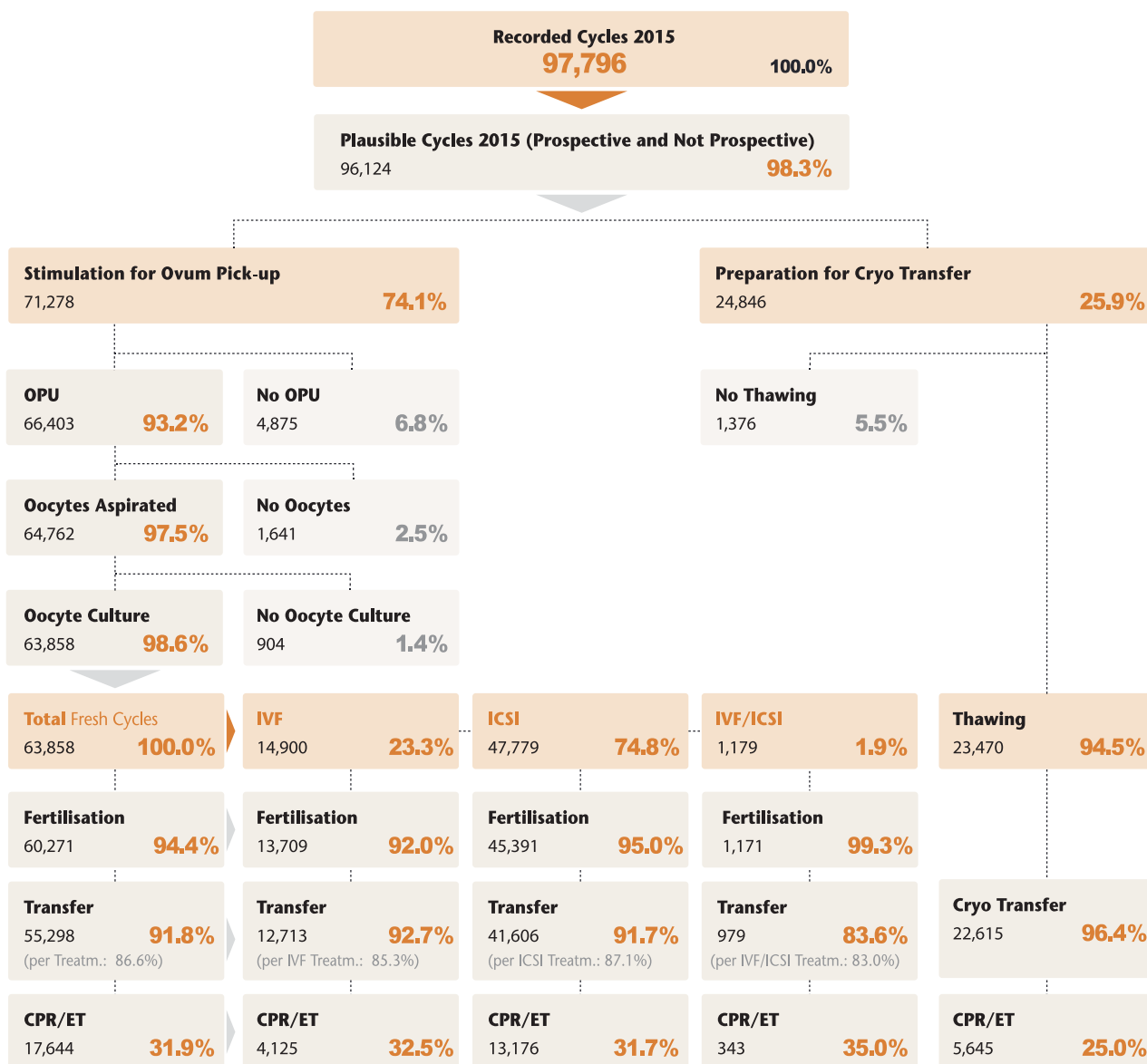


Births:	Singletons	Twins	Triplets	Quadrupl.
	9,479 (77.9%)	2,619 (21.5%)	74 (0.6%)	3 (0.03%)



# D·I·R Statistics in Brief 2015 – CoD Aug 30 2016

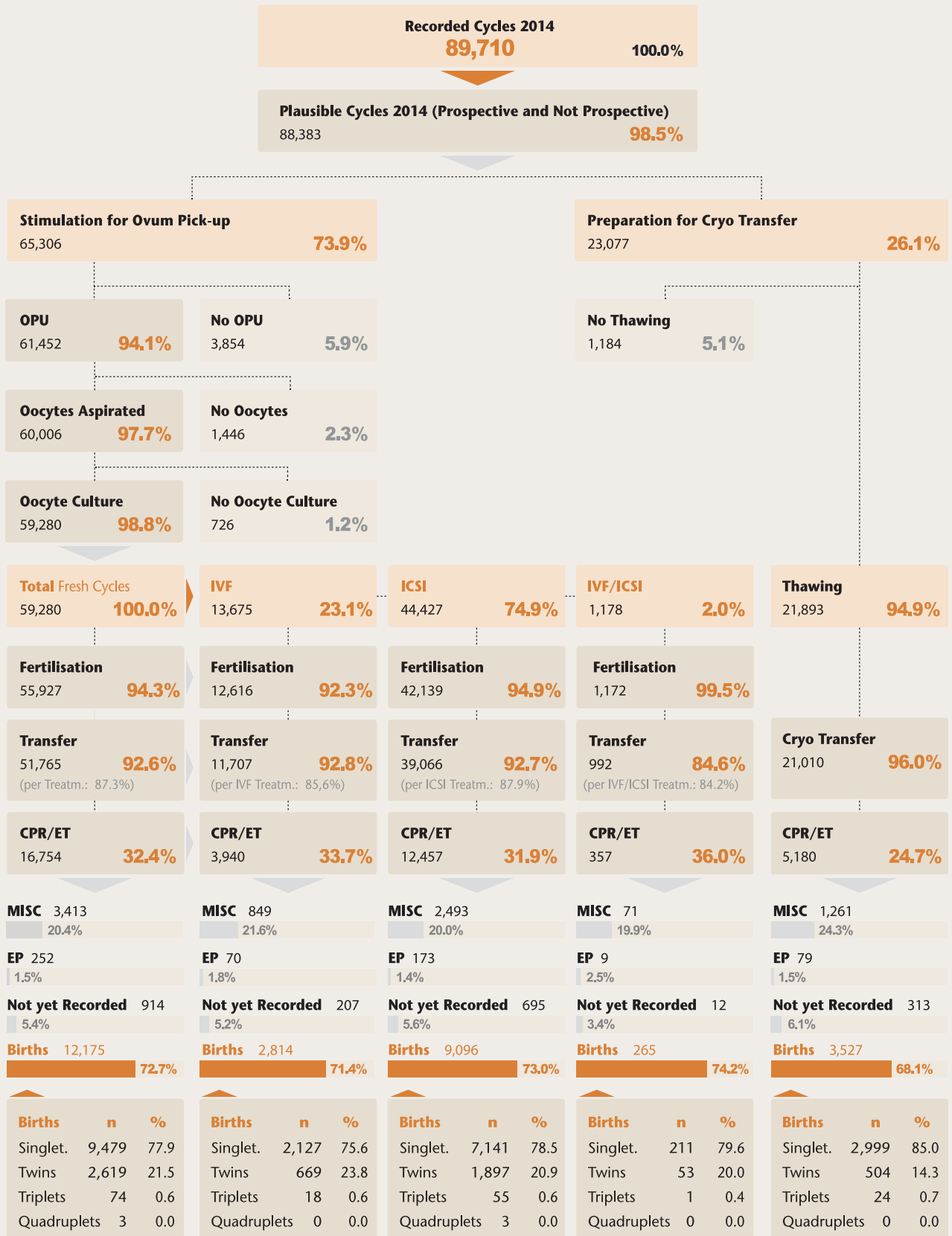
German IVF Registry – Prospective and Retrospective Data



# D·I·R Statistics in Brief 2014 – CoD Aug 30 2016



German IVF Registry



# Clinical Pregnancies (CP), Miscarriages (MISC), Ectopic Pregnancies (EP), and Still Births (SB) 2014

Prospective and Retrospective Data

Birth Rate/Transfer for patients with two embryos transferred and a surplus of at least two 2-PN-stage embryos:  
 IVF 22.7%, ICSI 22.0%, IVF/ICSI 26.0%

	IVF		ICSI		IVF/ICSI		Cryo Transfer	
	n	%	n	%	n	%	n	%
Treatment Cycles	13,675		44,427		1,178		21,893	
Treatm. with Doc. Preg. Outcome	13,468		43,731		1,166		21,580	
Clinical Pregnancies	3,940	100.0	12,457	100.0	357	100.0	5,180	100.0
No Information	207	5.2	695	5.6	12	3.4	313	6.1
Live Births	2,814	71.4	9,096	73.0	265	74.2	3,527	68.1
Miscarriages	849	21.6	2,493	20.0	71	19.9	1,261	24.3
included above: induced abortions and fetal reduction*	50 (60)		162 (226)		5 (8)		75 (100)	
Ectopic Pregnancies	70	1.8	173	1.4	9	2.5	79	1.5
Children	3,519		11,112		320		4,079	
Still Births**	32	0.8	93	0.7	3	0.8	15	0.3
Malformations	49	1.2	132	1.1	1	0.3	58	1.1
Baby-Take-Home-Rate***		20.6		20.5		22.5		16.1
		20.9 <sup>1</sup>		20.8 <sup>1</sup>		22.7 <sup>1</sup>		16.3 <sup>1</sup>
		21.7 <sup>2</sup>		21.6 <sup>2</sup>		23.3 <sup>2</sup>		17.0 <sup>2</sup>

\*) Number of cycles in which an induced abortion was documented. A more detailed differentiation cannot be supplied at this time.  
 The brackets contain the number of embryos

\*\*\*) Number of still births in relation to the number of children born

\*\*\*) Percentage of births per number of treatments

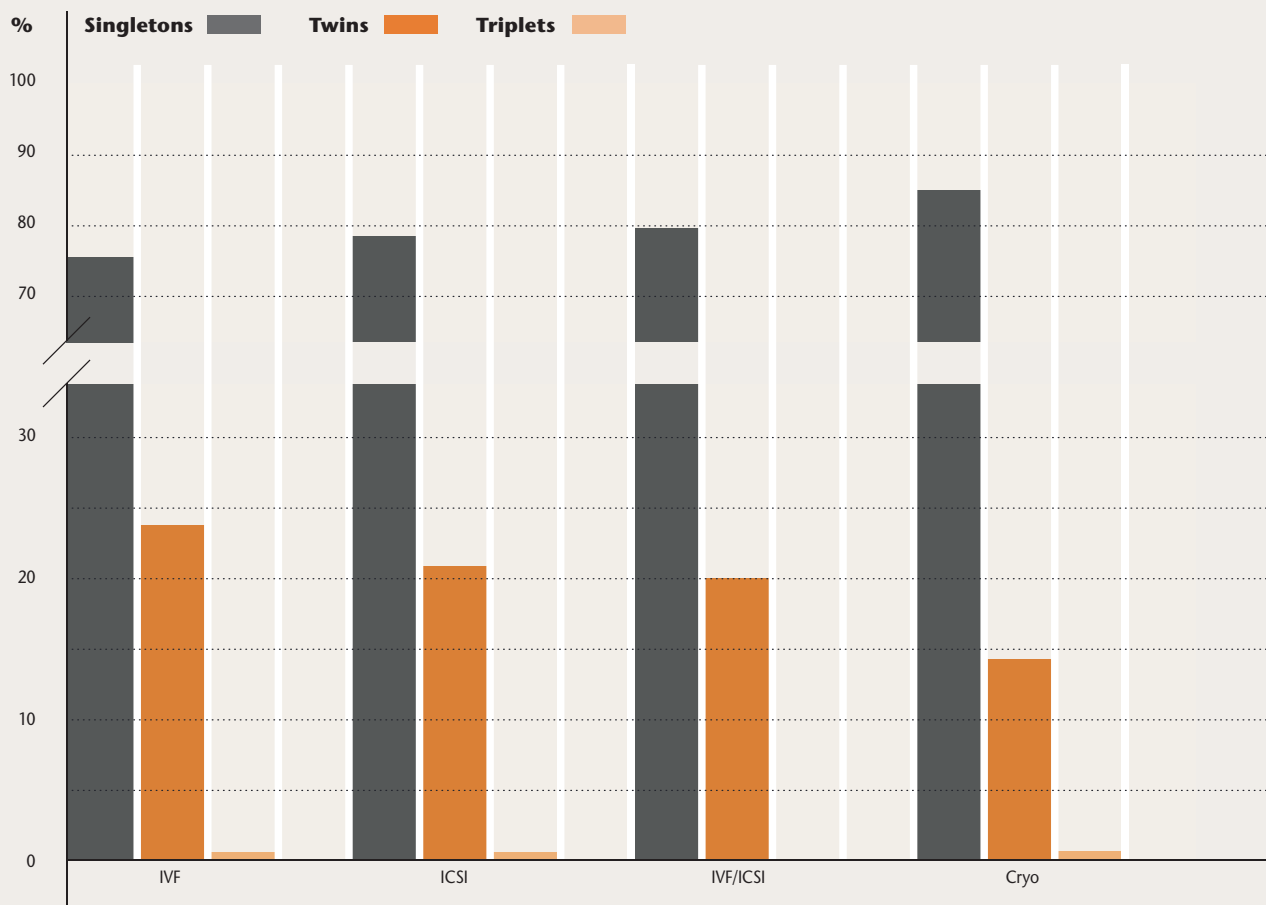
<sup>1</sup>) Cycles with unknown pregnancy outcome were subtracted from the base quantity (see „Treatments with documented pregnancy outcome“)

<sup>2</sup>) For cycles with unknown pregnancy outcome, the probable birth rate (births/pregnancy) was calculated and added to the number of known births

# Multiple Births 2014



Prospective and Retrospective Data



	IVF			ICSI			IVF/ICSI			Cryo Transfer		
	n	%	%	n	%	%	n	%	%	n	%	%
CP/ET	3,940	100.0		12,457	100.0		357	100.0		5,180	100.0	
Births	2,814	71.4	100.0	9,096	73.0	100.0	265	74.2	100.0	3,527	68.1	100.0
Singletons	2,127	54.0	75.6	7,141	57.3	78.5	211	59.1	79.6	2,999	57.9	85.0
Twins	669	17.0	23.8	1,897	15.2	20.9	53	14.8	20.0	504	9.7	14.3
Triplets	18	0.5	0.6	55	0.4	0.6	1	0.3	0.4	24	0.5	0.7
Quadruplets	0	0.0	0.0	3	0.0	0.0	0	0.0	0.0	0	0.0	0.0
No Information	207	5.2		695	5.6		12	3.4		313	6.1	
Miscarriages	849	21.6		2,493	20.0		71	19.9		1,261	24.3	
EPs	70	1.8		173	1.4		9	2.5		79	1.5	

# Births as a Function of Number of Embryos Transferred and Age Groups 2000 – 2014

IVF, ICSI, IVF/ICSI, Cryo Transfer – Prospective and Retrospective Data

Woman's Age in Years		Singletons		Twins		Triplets		Quadruplets		Total
		n	%	n	%	n	%	n	%	n
<b>&lt;= 24</b>	1 Embryo	171	97.7	4	2.3	0	0.0	0	0.0	175
	2 Embryos	1,719	76.4	521	23.2	10	0.4	0	0.0	2,250
	3 Embryos	278	67.6	111	27.0	20	4.9	2	0.5	411
	<b>Total</b>	<b>2,168</b>	<b>76.4</b>	<b>636</b>	<b>22.4</b>	<b>30</b>	<b>1.1</b>	<b>2</b>	<b>0.1</b>	<b>2,836</b>
<b>25 – 29</b>	1 Embryo	2,072	96.0	81	3.8	6	0.3	0	0.0	2,159
	2 Embryos	18,046	75.4	5,788	24.2	111	0.5	2	0.0	23,947
	3 Embryos	2,782	68.7	1,039	25.7	224	5.5	3	0.1	4,048
	<b>Total</b>	<b>22,900</b>	<b>75.9</b>	<b>6,908</b>	<b>22.9</b>	<b>341</b>	<b>1.1</b>	<b>5</b>	<b>0.0</b>	<b>30,154</b>
<b>30 – 34</b>	1 Embryo	5,321	96.7	177	3.2	7	0.1	0	0.0	5,505
	2 Embryos	39,735	76.3	12,117	23.3	223	0.4	3	0.0	52,078
	3 Embryos	8,060	70.8	2,848	25.0	469	4.1	7	0.1	11,384
	<b>Total</b>	<b>53,116</b>	<b>77.0</b>	<b>15,142</b>	<b>22.0</b>	<b>699</b>	<b>1.0</b>	<b>10</b>	<b>0.0</b>	<b>68,967</b>
<b>35 – 39</b>	1 Embryo	5,591	97.1	160	2.8	6	0.1	0	0.0	5,757
	2 Embryos	30,272	82.3	6,399	17.4	111	0.3	2	0.0	36,784
	3 Embryos	11,191	76.8	3,047	20.9	338	2.3	2	0.0	14,578
	<b>Total</b>	<b>47,054</b>	<b>82.4</b>	<b>9,606</b>	<b>16.8</b>	<b>455</b>	<b>0.8</b>	<b>4</b>	<b>0.0</b>	<b>57,119</b>
<b>&gt;= 40</b>	1 Embryo	1,320	95.7	57	4.1	2	0.1	0	0.0	1,379
	2 Embryos	4,454	90.4	462	9.4	9	0.2	1	0.0	4,926
	3 Embryos	3,147	87.1	445	12.3	23	0.6	0	0.0	3,615
	<b>Total</b>	<b>8,921</b>	<b>89.9</b>	<b>964</b>	<b>9.7</b>	<b>34</b>	<b>0.3</b>	<b>1</b>	<b>0.0</b>	<b>9,920</b>

Total number of births 2000 – 2014: 168,996

# Births as a Function of Number of Embryos Transferred and Treatment Method 2000 – 2014

Prospective and Retrospective Data

## IVF

	Singletons		Twins		Triplets		Quadruplets		Total
	n	%	n	%	n	%	n	%	
1 Embryo	2,753	98.4	41	1.5	4	0.1	0	0.0	2,798
2 Embryos	21,930	77.0	6,438	22.6	112	0.4	1	0.0	28,481
3 Embryos	6,222	68.5	2,467	27.2	382	4.2	6	0.1	9,077
<b>Total</b>	<b>30,905</b>	<b>76.6</b>	<b>8,946</b>	<b>22.2</b>	<b>498</b>	<b>1.2</b>	<b>7</b>	<b>0.0</b>	<b>40,356</b>

## ICSI

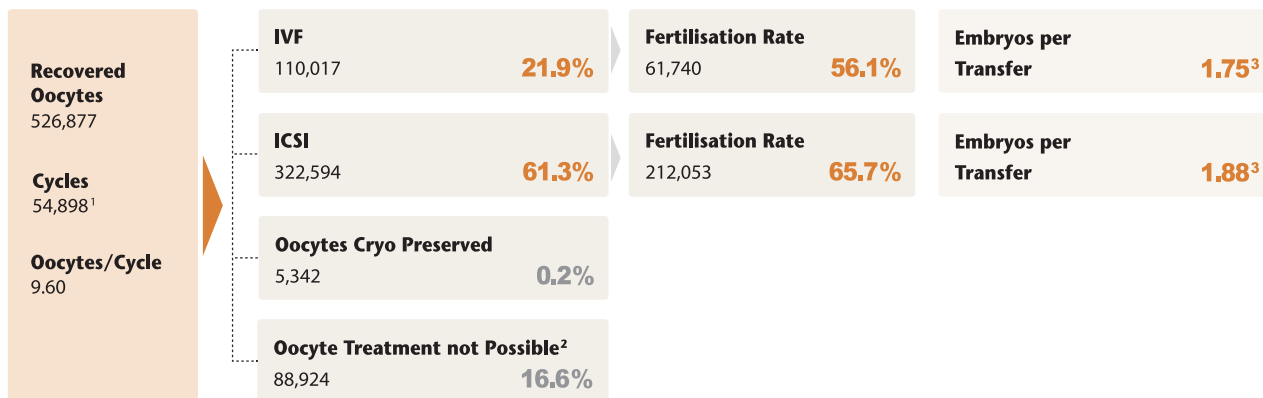
	Singletons		Twins		Triplets		Quadruplets		Total
	n	%	n	%	n	%	n	%	
1 Embryo	7,409	98.3	119	1.6	11	0.1	0	0.0	7,539
2 Embryos	54,568	78.1	15,058	21.6	233	0.3	4	0.0	69,863
3 Embryos	14,031	75.2	4,046	21.7	568	3.0	9	0.0	18,654
<b>Total</b>	<b>76,008</b>	<b>79.1</b>	<b>19,223</b>	<b>20.0</b>	<b>812</b>	<b>0.8</b>	<b>13</b>	<b>0.0</b>	<b>96,056</b>

## Cryo Transfer

	Singletons		Twins		Triplets		Quadruplets		Total
	n	%	n	%	n	%	n	%	
1 Embryo	3,381	97.6	75	2.2	6	0.2	0	0.0	3,462
2 Embryos	16,673	85.0	2,860	14.6	76	0.4	0	0.0	19,609
3 Embryos	5,213	77.6	1,365	20.3	142	2.1	1	0.0	6,721
<b>Total</b>	<b>25,267</b>	<b>84.8</b>	<b>4,300</b>	<b>14.4</b>	<b>224</b>	<b>0.8</b>	<b>1</b>	<b>0.0</b>	<b>29,792</b>

# Fertilisation Rate 2015

IVF and ICSI – Prospective Data



# Embryos per Transfer<sup>3</sup> and Children After IVF, ICSI 1997 – 2014

Prospective and Retrospective Data

		1997	[ ... ]	2004	2005	2006	2007	2008	2009	2010	2011	2012	2013	2014	
<b>IVF</b>	Embryos Transf.	2.49	<i>For values from 1998 to 2003 see <a href="http://www.deutsches-ivf-register.de">www.deutsches-ivf-register.de</a></i>	2.15	2.11	2.08	2.08	2.06	2.03	2.01	1.95	1.88	1.86	1.75	
	Children/Transf.	0.21		0.23	0.24	0.25	0.25	0.24	0.24	0.24	0.22	0.17	0.26	0.32	0.30
	Children/Deliv.	1.31		1.25	1.23	1.23	1.24	1.24	1.24	1.22	1.24	1.26	1.22	1.08	1.25
<b>ICSI</b>	Embryos Transf.	2.56		2.15	2.11	2.09	2.08	2.08	2.06	2.05	1.98	1.91	1.88	1.88	
	Children/Transf.	0.22		0.23	0.24	0.24	0.24	0.23	0.23	0.22	0.16	0.25	0.28	0.29	
	Children/Deliv.	1.29		1.22	1.22	1.20	1.21	1.22	1.21	1.21	1.22	1.21	1.22	1.22	
<b>Cryo-Transfer</b>	Embryos Transf.	2.34		2.14	2.10	2.10	2.07	2.07	2.05	2.04	1.96	1.79	1.65	1.67	
	Children/Transf.	0.10		0.12	0.14	0.14	0.14	0.14	0.14	0.14	0.11	0.16	0.19	0.19	
	Children/Deliv.	1.14		1.17	1.16	1.16	1.16	1.15	1.16	1.16	1.18	1.16	1.16	1.16	

1) In 814 cases no IVF- or ICSI treatment was performed. 273 are cases in which oocytes were recovered but nevertheless a cryo transfer was performed  
 2) Reason: e.g. immature oocytes or no sperm available  
 3) Mean

# Distribution of Indications 2015

## IVF and ICSI – Prospective Data

### IVF

Male Factor ▶	Normal		Reduced Semen Quality		Other**		Total	
Female Factor ▼	n	%	n	%	n	%	n	%
Normal	1,328	11.4	591	5.1	989	8.5	2,908	25.0
Tubal Pathology	1,698	14.6	406	3.5	644	5.5	2,748	23.6
Endometriosis	709	6.1	215	1.8	449	3.9	1,373	11.8
Hyperandrog./PCO	333	2.9	119	1.0	185	1.6	637	5.5
Ovulatory Dysf.	434	3.7	218	1.9	208	1.8	860	7.4
Psychogen. Factors	135	1.1	38	0.3	88	0.8	261	2.2
Other*	679	5.8	507	4.3	1,237	10.6	2,423	20.7
No Information	23	0.2	8	0.1	413	3.5	444	3.8
<b>Total</b>	<b>5,339</b>	<b>45.8</b>	<b>2,102</b>	<b>18.0</b>	<b>4,213</b>	<b>36.2</b>	<b>11,654</b>	<b>100.0</b>

### ICSI

Male Factor ▶	Normal		Reduced Semen Qual.		Azoospermia		Other**		Total	
Female Factor ▼	n	%	n	%	n	%	n	%	n	%
Normal	880	2.2	10,580	27.0	1,083	2.8	3,831	9.8	16,374	41.8
Tubal Pathology	429	1.1	1,621	4.1	68	0.2	682	1.7	2,800	7.1
Endometriosis	282	0.7	1,525	3.9	62	0.2	766	2.0	2,635	6.8
Hyperandrog./PCO	148	0.4	1,070	2.7	58	0.1	542	1.4	1,818	4.6
Ovulatory Dysf.	208	0.5	1,788	4.6	118	0.3	690	1.7	2,804	7.1
Psychogen. Factors	72	0.2	479	1.2	51	0.1	216	0.6	818	2.1
Other*	553	1.4	4,535	11.6	286	0.7	4,158	10.6	9,532	24.3
No Information	34	0.1	84	0.2	11	0.0	2,320	5.9	2,449	6.2
<b>Total</b>	<b>2,606</b>	<b>6.6</b>	<b>21,682</b>	<b>55.3</b>	<b>1,737</b>	<b>4.4</b>	<b>13,205</b>	<b>33.7</b>	<b>39,230</b>	<b>100.0</b>

\*) The indications "sperm antibodies" and "cervical factor" are included here

\*\*) The indication "pathological function test" is included here



# IVF and ICSI – Results 2014

## Prospective Data

### IVF 2014

	<b>n</b>	<b>%</b>	<b>Fertilisation %</b>	<b>Embryo %</b>	<b>Transfer %</b>	<b>Clin. Preg. %</b>
Performed IVF Treatm.	11,654	100.0				
Successful Fertilis.*	10,741	92.2	100.0			
Minimum 1 Embryo	10,426	89.5	97.1	100.0		
ET Performed	10,114	86.8	94.2	97.0	100.0	
Clin. Pregnancy	3,438	29.5	32.0	33.0	<b>34.0</b>	100.0
Birth	2,466					71.7
Miscarriage	734					21.3
Ectopic Pregnancy	65					1.9
Not Yet Recorded	173					5.0

### ICSI 2014

	<b>n</b>	<b>%</b>	<b>Fertilisation %</b>	<b>Embryo %</b>	<b>Transfer %</b>	<b>Clin. Preg. %</b>
Performed ICSI Treatm.	39,230	100.0				
Successful Fertilis.*	37,274	95.0	100.0			
Minimum 1 Embryo	35,653	90.9	95.7	100.0		
ET Performed	34,730	88.5	93.2	97.4	100.0	
Clin. Pregnancy	11,240	28.7	30.2	31.5	<b>32.4</b>	100.0
Birth	8,226					73.2
Miscarriage	2,255					20.1
Ectopic Pregnancy	163					1.5
Not Yet Recorded	596					5.3

\*) Successful fertilisation of at least one oocyte per cycle

## TESE and Cryo Transfer – Results 2014

Prospective Data

### ICSI/TESE 2014

	<b>n</b>	<b>%</b>	<b>Fertilisation %</b>	<b>Embryo %</b>	<b>Transfer %</b>	<b>Clin. Preg. %</b>
ICSI	2,107	100.0				
Successful Fertilis.*	1,925	91.4	100.0			
Minimum 1 Embryo	1,833	87.0	95.2	100.0		
ET Performed	1,808	85.8	93.9	98.6	100.0	
Clin. Pregnancy	531	25.2	27.6	29.0	<b>29.4</b>	100.0
Birth	398					75.0
Miscarriage	106					20.0
Ectopic Pregnancy	11					2.0
Not Yet Recorded	16					3.0

### Cryo Transfer 2014

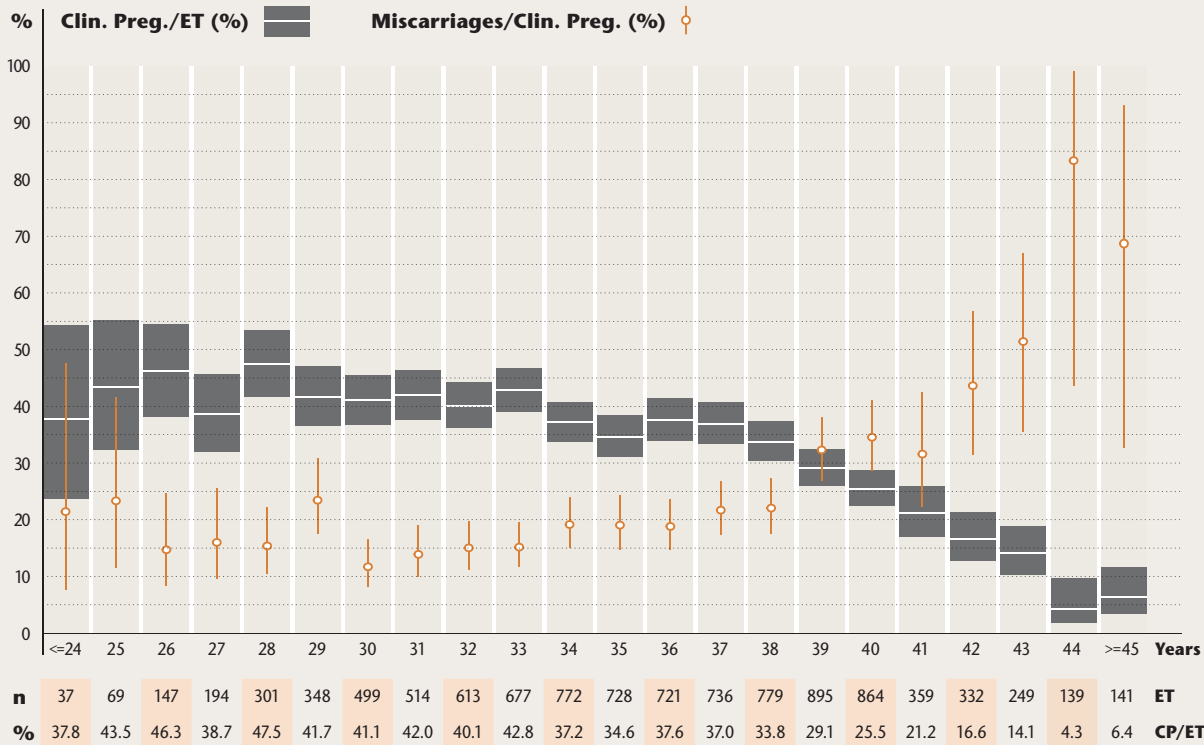
	<b>n</b>	<b>%</b>	<b>PN %</b>	<b>Transfer %</b>	<b>Clin. Preg. %</b>
Cryo Transfer Cycles	19,693	100.0			
Thawed PN	19,390	98.5	100.0		
ET Performed	18,907	96.0	97.5	100.0	
Clin. Pregnancy	4,661	23.7	24.0	<b>24.7</b>	100.0
Birth	3,225				69.2
Miscarriage	1,119				24.0
Ectopic Pregnancy	73				1.6
Not Yet Recorded	244				5.2

\*) Successful fertilisation of at least one oocyte per cycle

# Pregnancy Rate as a Function of Female Age 2014

Prospective Data

## IVF 2014



n	37	69	147	194	301	348	499	514	613	677	772	728	721	736	779	895	864	359	332	249	139	141	ET
%	37.8	43.5	46.3	38.7	47.5	41.7	41.1	42.0	40.1	42.8	37.2	34.6	37.6	37.0	33.8	29.1	25.5	21.2	16.6	14.1	4.3	6.4	CP/ET

Age in Years	<= 29	30 – 34	35 – 39	40	41	42	43	44	>=45	Total
OPU	1,271	3,502	4,420	989	432	394	290	177	179	<b>11,654</b>
Oocytes <sup>1</sup>	11.4	10.6	8.6	7.2	6.3	6.4	5.0	5.1	9.6	<b>9.0</b>
Insemination <sup>1</sup>	11.2	10.4	8.4	7.1	6.2	6.3	4.9	5.0	4.6	<b>8.9</b>
ET	1,096	3,075	3,859	864	359	332	249	139	141	<b>10,114</b>
ET/OPU %	86.2	87.8	87.3	87.4	83.1	84.3	85.9	78.5	86.8	<b>86.8</b>
Trans. Embr. <sup>1</sup>	1.83	1.85	1.86	1.89	1.89	1.89	1.82	1.85	1.98	<b>1.86</b>
CP	475	1,244	1,318	220	76	55	35	6	9	<b>3,438</b>
CP/OPU %	37.4	35.5	29.8	22.2	17.6	14.0	12.1	3.4	5.0	<b>29.5</b>
CP/ET upper Confidence Limit* %	46.4	42.2	35.8	28.7	26.0	21.3	18.8	9.7	11.7	<b>35.0</b>
CP/ET %	<b>43.3</b>	<b>40.5</b>	<b>34.2</b>	<b>25.5</b>	<b>21.2</b>	<b>16.6</b>	<b>14.1</b>	<b>4.3</b>	<b>6.4</b>	<b>34.0</b>
CP/ET lower Confidence Limit* %	40.4	38.7	32.6	22.5	17.0	12.7	10.3	1.9	3.4	<b>33.0</b>
CP/ET %: 2 Embr.transf. + min. 2.2-PN surplus	44.6	43.2	37.1	30.2	24.5	20.1	19.1	4.4	6.4	<b>37.3</b>

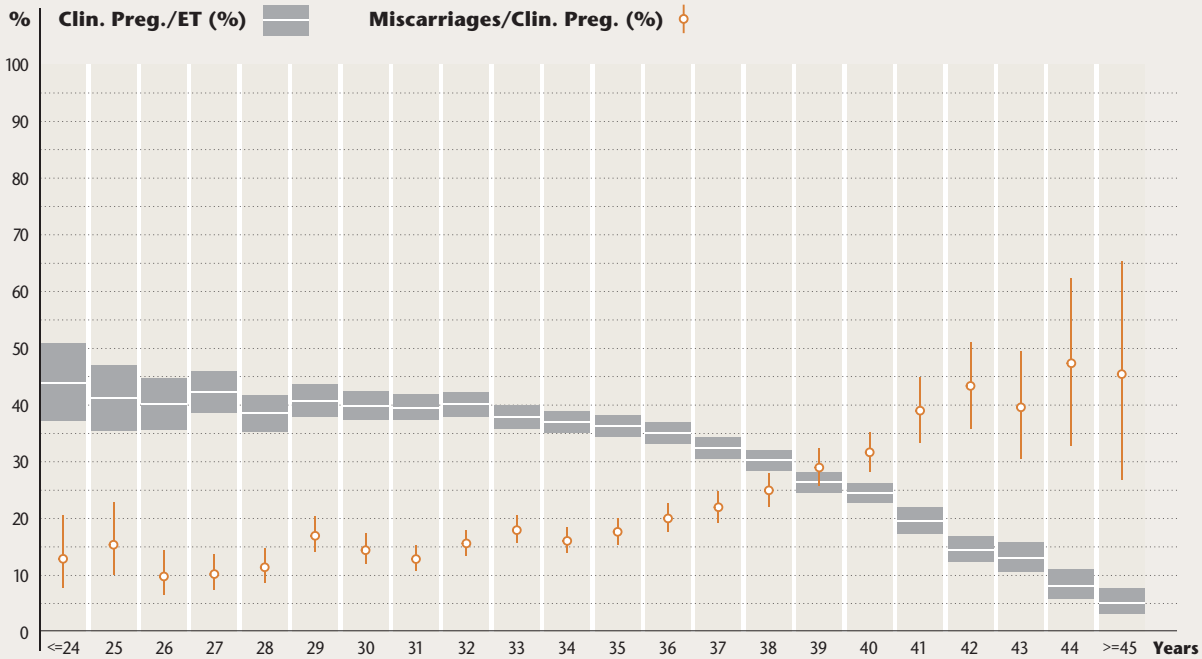
1) Mean  
\* With a 95%-probability, the true mean lies within the defined confidence interval.



# Pregnancy Rate as a Function of Female Age 2014

Prospective Data

## ICSI 2014



n	212	284	483	763	955	1,244	1,565	1,926	2,264	2,376	2,605	2,632	2,620	2,535	2,675	2,705	2,713	1,347	1,143	776	473	434	ET
%	43.9	41.2	40.2	42.3	38.5	40.8	39.9	39.6	40.2	38.0	37.0	36.4	35.1	32.5	30.2	26.4	24.4	19.6	14.5	13.0	8.0	5.1	CP/ET

Age in Years	<= 29	30 – 34	35 – 39	40	41	42	43	44	>=45	Total
OPU	4,366	11,854	14,700	3,103	1,556	1,343	949	597	632	<b>39,100</b>
Oocytes <sup>1</sup>	12.1	11.1	9.1	7.6	6.9	6.5	5.2	5.6	4.2	<b>9.5</b>
Insemination <sup>1</sup>	9.2	8.6	7.1	6.0	5.3	5.1	4.3	4.4	3.5	<b>7.4</b>
ET	3,941	10,736	13,167	2,713	1,347	1,143	776	473	434	<b>34,730</b>
ET/OPU %	90.3	90.6	89.6	87.4	86.6	85.1	81.8	79.2	68.7	<b>88.8</b>
Trans. Embr. <sup>1</sup>	1.85	1.86	1.86	1.89	1.88	1.88	1.82	1.82	1.65	<b>1.86</b>
CP	1,602	4,162	4,222	663	264	166	101	38	22	<b>11,240</b>
CP/OPU %	36.7	35.1	28.7	21.4	17.0	12.4	10.6	6.4	3.5	<b>28.8</b>
CP/ET upper Confidence Limit* %	42.2	39.7	32.9	26.2	22.0	16.9	15.8	11.0	7.7	<b>32.9</b>
CP/ET %	<b>40.6</b>	<b>38.8</b>	<b>32.1</b>	<b>24.4</b>	<b>19.6</b>	<b>14.5</b>	<b>13.0</b>	<b>8.0</b>	<b>5.1</b>	<b>32.4</b>
CP/ET lower Confidence Limit* %	39.1	37.8	31.2	22.7	17.4	12.4	10.6	5.8	3.3	<b>31.8</b>
CP/ET %: 2 Embr.transf. + min. 2.2-PN surplus	41.8	41.2	35.1	27.4	22.7	17.6	18.4	9.2	8.1	<b>35.6</b>

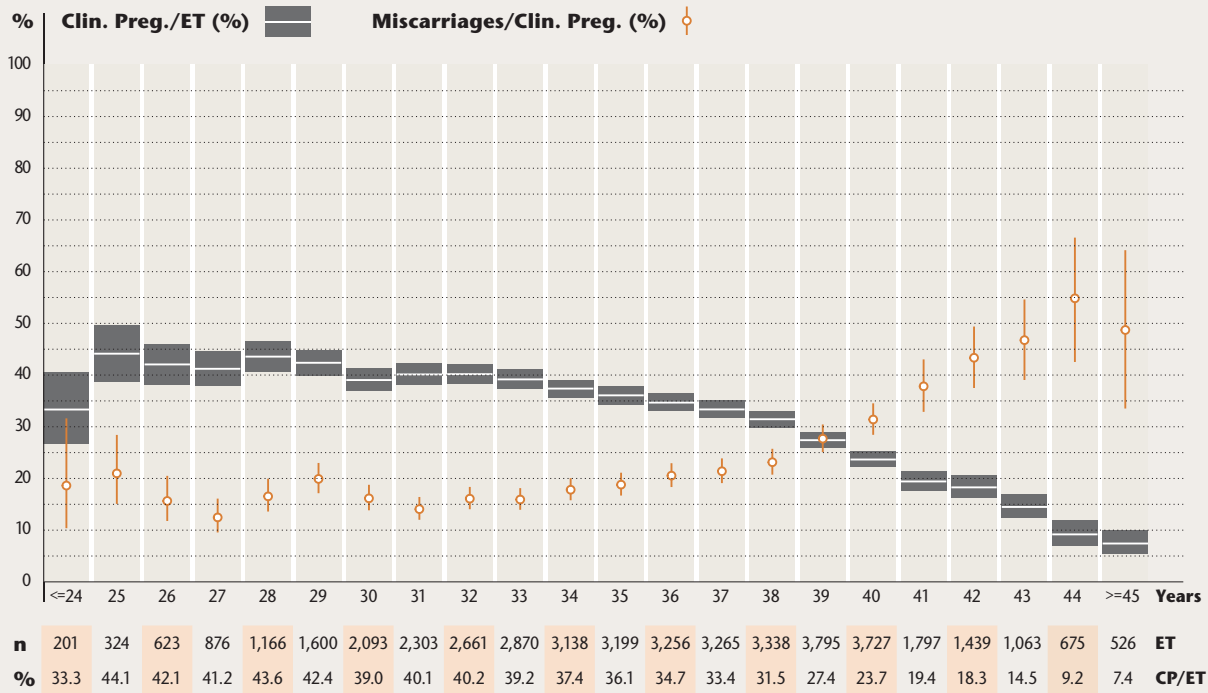
1) Mean

\* With a 95%-probability, the true mean lies within the defined confidence interval.

# Pregnancy Rate and Ongoing Pregnancy as a Function of Female Age 2010 – 2014

Prospektive Daten

## IVF 2010 – 2014



n	201	324	623	876	1,166	1,600	2,093	2,303	2,661	2,870	3,138	3,199	3,256	3,265	3,338	3,795	3,727	1,797	1,439	1,063	675	526	ET
%	33.3	44.1	42.1	41.2	43.6	42.4	39.0	40.1	40.2	39.2	37.4	36.1	34.7	33.4	31.5	27.4	23.7	19.4	18.3	14.5	9.2	7.4	CP/ET

Age in Years	<= 29	30 – 34	35 – 39	40	41	42	43	44	>=45	Total
OPU	5,464	14,681	18,993	4,240	2,120	1,648	1,249	834	672	49,901
Oocytes <sup>1</sup>	11.5	10.4	8.4	7.1	6.4	6.1	5.5	5.2	4.7	8.9
ET/OPU %	87.7	89.0	100.0	87.9	84.8	87.3	85.1	80.9	78.3	92.3
Trans. Embr. <sup>1</sup>	1.89	1.90	1.91	1.96	1.95	1.98	1.94	1.94	1.85	1.91
CP	2,019	5,107	5,462	882	349	263	154	62	39	14,337
CP/OPU %	37.0	34.8	28.8	20.8	16.5	16.0	12.3	7.4	5.8	28.7
CP/ET upper Confidence Limit* %	43.6	40.0	33.2	25.2	21.4	20.5	16.9	12.0	10.0	33.1
CP/ET %	42.2	39.1	32.4	23.7	19.4	18.3	14.5	9.2	7.4	32.6
CP/ET lower Confidence Limit* %	40.7	38.2	31.6	22.2	17.6	16.2	12.4	7.0	5.5	32.2
CP/ET %: 2 Embr. transf. + min. 2 2-PN surplus	44.0	41.6	35.3	26.8	22.4	21.7	18.5	10.8	10.2	35.8
Misc./CP upper Confidence Limit* %	18.7	17.1	23.3	34.5	43.0	49.4	54.6	66.6	64.1	21.8
Misc./CP %	17.1	16.1	22.2	31.4	37.8	43.3	46.8	54.8	48.7	21.1
Misc./CP lower Confidence Limit* %	15.6	15.2	21.2	28.4	32.9	37.5	39.0	42.5	33.5	20.5
Births/Trans. upper Confidence Limit* %	32.0	30.2	23.1	15.7	12.5	11.2	8.5	5.2	4.4	23.3
Births/Transfer %	30.6	29.3	22.4	14.4	10.9	9.4	6.7	3.3	2.5	22.9
Births/Trans. lower Confidence Limit* %	29.2	28.5	21.7	13.2	9.4	7.8	5.2	2.0	1.4	22.4

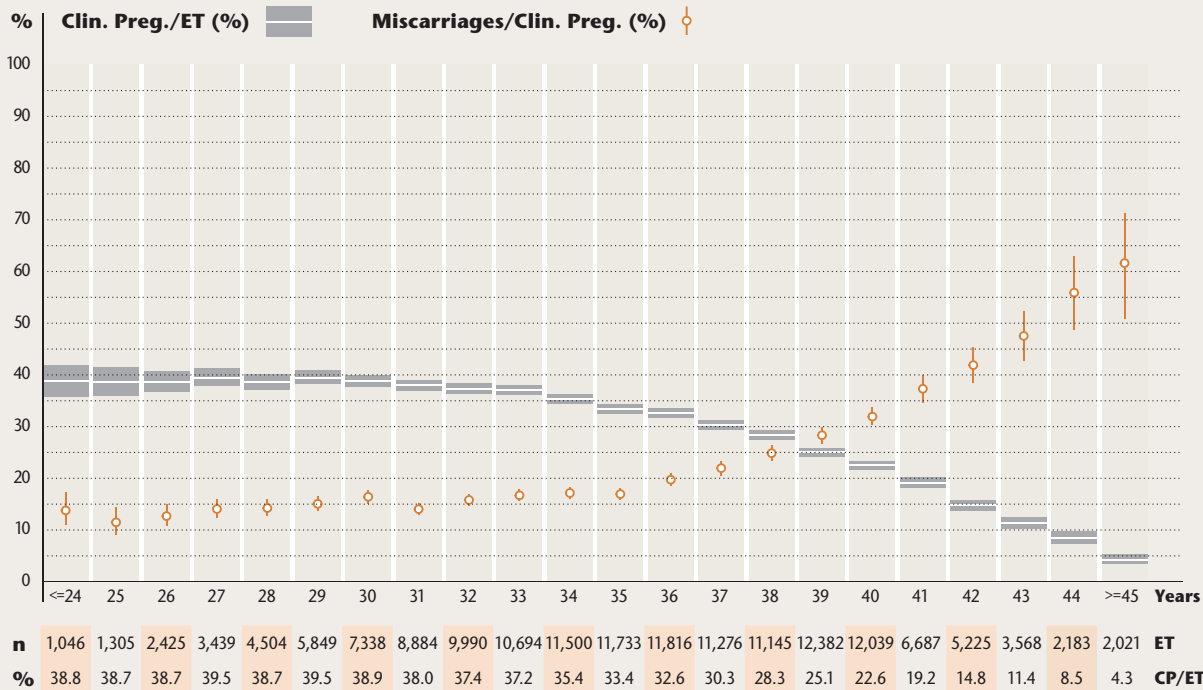
1) Mean  
\* With a 95%-probability, the true mean lies within the defined confidence interval.



# Pregnancy Rate and Ongoing Pregnancy as a Function of Female Age 2010 – 2014

Prospektive Daten

## ICSI 2010 – 2014



Age in Years	<= 29	30 – 34	35 – 39	40	41	42	43	44	>=45	Total
OPU	20,255	52,561	64,254	13,504	7,606	6,051	4,265	2,621	2,671	<b>173,788</b>
Oocytes <sup>1</sup>	12.3	11.1	9.1	7.6	6.9	6.4	5.8	5.3	4.3	<b>9.5</b>
ET/OPU %	91.7	90.8	89.2	87.9	86.3	83.7	83.3	77.6	75.7	<b>90.4</b>
Trans. Embr. <sup>1</sup>	1.90	1.91	1.92	1.96	1.96	1.94	1.93	1.87	1.80	<b>1.92</b>
CP	7,258	18,005	17,445	2,715	1,281	771	406	186	86	<b>48,153</b>
CP/OPU %	35.8	34.3	27.2	20.1	16.8	12.7	9.5	7.1	3.2	<b>27.7</b>
CP/ET upper Confidence Limit* %	39.8	37.7	30.3	23.4	20.2	15.8	12.6	9.8	5.3	<b>30.9</b>
<b>CP/ET %</b>	<b>39.1</b>	<b>37.2</b>	<b>29.9</b>	<b>22.6</b>	<b>19.2</b>	<b>14.8</b>	<b>11.4</b>	<b>8.5</b>	<b>4.3</b>	<b>30.7</b>
CP/ET lower Confidence Limit* %	38.3	36.7	29.5	21.8	18.1	13.7	10.3	7.4	3.4	<b>30.4</b>
CP/ET %: 2 Embr. transf. + min. 2 2-PN surplus	40.5	39.1	32.5	25.5	21.9	17.7	14.4	10.7	6.2	<b>35.6</b>
Aborte/Klin. SS upper Confidence Limit* %	14.8	16.6	22.6	33.7	40.0	45.4	52.4	62.9	71.3	<b>20.6</b>
<b>Misc./CP %</b>	<b>14.1</b>	<b>16.1</b>	<b>22.0</b>	<b>31.9</b>	<b>37.3</b>	<b>41.9</b>	<b>47.5</b>	<b>55.9</b>	<b>61.6</b>	<b>20.3</b>
Misc./CP lower Confidence Limit* %	13.3	15.6	21.4	30.2	34.7	38.5	42.7	48.7	50.9	<b>20.0</b>
Births/Trans. upper Confidence Limit* %	30.8	28.7	21.4	14.3	11.6	8.4	6.0	4.1	2.2	<b>22.2</b>
<b>Births/Transfer %</b>	<b>30.0</b>	<b>28.3</b>	<b>21.0</b>	<b>13.5</b>	<b>10.7</b>	<b>7.6</b>	<b>5.1</b>	<b>3.1</b>	<b>1.3</b>	<b>22.0</b>
Births/Trans. lower Confidence Limit* %	29.3	27.8	20.6	12.9	9.9	6.8	4.4	2.4	0.8	<b>21.8</b>

1) Mean  
\* With a 95%-probability, the true mean lies within the defined confidence interval.

# Clinical Pregnancies (CP)/ET as a Function of the Number of Embryos Transferred and Age Groups 2015



IVF, ICSI – Prospective Data

## IVF

Age in Year	1 Embryo		2 Embryos		3 Embryos		Total	
	ET	CP/ET %	ET	CP/ET %	ET	CP/ET %	ET	CP/ET %
<= 24	0	0.0	27	40.7	2	0.0	29	37.9
25 – 29	198	34.3	949	42.7	29	41.4	1,176	41.2
30 – 34	588	29.1	2,707	39.9	122	41.8	3,417	38.1
35 – 39	891	19.9	3,178	37.0	274	32.5	4,343	33.2
40	216	12.5	573	27.7	138	23.9	927	23.6
41	107	12.1	247	25.5	82	20.7	436	21.3
42	100	6.0	148	18.9	37	40.5	285	17.2
43	67	3.0	148	15.5	58	19.0	273	13.2
44	57	0.0	72	8.3	35	8.6	164	5.5
45	22	0.0	35	0.0	16	12.5	73	2.7
>= 46	24	8.3	30	10.0	8	0.0	62	8.1
<b>Total</b>	<b>2,270</b>	<b>20.5</b>	<b>8,114</b>	<b>36.4</b>	<b>801</b>	<b>29.1</b>	<b>11,185</b>	<b>32.7</b>

## ICSI

Age in Year	1 Embryo		2 Embryos		3 Embryos		Total	
	ET	CP/ET %	ET	CP/ET %	ET	CP/ET %	ET	CP/ET %
<= 24	26	38.5	125	44.0	3	33.3	154	42.9
25 – 29	633	29.5	3,290	40.7	161	40.4	4,084	39.0
30 – 34	1,871	28.1	8,869	40.5	555	36.9	11,295	38.2
35 – 39	3,070	21.1	10,305	35.1	1,294	33.8	14,669	32.1
40	713	12.6	1,790	27.3	426	34.3	2,929	24.8
41	385	10.9	817	22.2	229	21.0	1,431	18.9
42	326	9.8	548	23.5	215	20.0	1,089	18.7
43	276	7.2	389	15.4	147	19.7	812	13.4
44	188	5.3	236	12.7	98	9.2	522	9.4
45	105	2.9	119	7.6	49	16.3	273	7.3
>= 46	111	2.7	89	2.2	41	7.3	241	3.3
<b>Total</b>	<b>7,704</b>	<b>20.4</b>	<b>26,577</b>	<b>35.7</b>	<b>3,218</b>	<b>30.9</b>	<b>37,499</b>	<b>32.2</b>

# Clinical Pregnancies (CP)/ET as a Function of the Number of Embryos Transferred and Age Groups 2015

Cryo Transfer – Prospective Data

## Kryo-ET

Age in Years	1 Embryo		2 Embryos		3 Embryos		Total	
	ET	CP/ET %	ET	CP/ET %	ET	CP/ET %	ET	CP/ET %
<= 24	14	42.9	79	32.9	10	10.0	103	32.0
25 – 29	311	19.9	1,709	29.0	164	31.7	2,184	27.9
30 – 34	1,111	17.9	5,452	29.5	537	26.3	7,100	27.4
35 – 39	1,476	18.6	5,915	26.1	663	24.3	8,067	24.6
40	233	12.9	898	21.3	135	28.1	1,266	20.5
41	154	13.0	569	21.3	112	21.4	835	19.8
42	109	11.9	337	16.3	63	20.6	509	15.9
43	50	8.0	217	12.0	55	18.2	322	12.4
44	37	21.6	115	13.9	36	16.7	188	16.0
45	19	10.5	65	7.7	12	0.0	96	7.3
>= 46	12	0.0	48	4.2	10	20.0	70	5.7
<b>Total</b>	<b>3,526</b>	<b>17.6</b>	<b>15,404</b>	<b>26.6</b>	<b>1,797</b>	<b>24.9</b>	<b>20,740</b>	<b>24.9</b>

# Clinical Pregnancies (CP)/Fresh Transfer as a Function of Embryo Quality 2015

IVF, ICSI, IVF/ICSI – Prospective Data

Quality		<= 29 Years		30 – 34 Years		35 – 39 Years		>= 40 Years		Total	
Ideal	Not Ideal	ET	CP/ET %	ET	CP/ET %	ET	CP/ET %	ET	CP/ET %	ET	CP/ET %
0	1	127	14.2	365	11.5	611	7.9	429	4.4	1,532	8.3
0	2	299	26.1	816	22.8	953	19.9	411	11.7	2,479	20.3
0	3	13	23.1	58	12.1	90	13.3	80	10.0	241	12.5
1	0	723	33.2	2,077	30.8	3,480	22.9	2,269	10.0	8,549	22.3
1	1	413	33.9	1,195	34.3	1,560	30.7	705	18.7	3,873	30.0
1	2	25	36.0	70	40.0	137	25.6	105	19.1	337	27.3
2	0	3,667	43.5	9,536	42.7	10,857	37.8	4,018	24.6	28,078	38.3
2	1	20	25.0	72	40.3	199	38.7	246	22.0	537	30.7
3	0	140	43.6	491	39.9	1,202	34.9	1,225	24.3	3,058	31.9
<b>Total</b>		<b>5,427</b>	<b>39.6</b>	<b>14,680</b>	<b>38.2</b>	<b>19,089</b>	<b>32.3</b>	<b>9,488</b>	<b>18.9</b>	<b>48,684</b>	<b>32.3</b>



## Clinical Pregnancies (CP)/Frozen Transfer as a Function of Embryo Quality 2015

Cryo Transfer – Prospective Data

Quality		IVF		ICSI	
ideal	Not Ideal	ET	CP/ET %	ET	CP/ET %
0	1	133	6.0	512	7.4
0	2	275	14.9	947	14.7
0	3	45	15.6	159	17.6
1	0	715	22.1	3,144	19.1
1	1	417	21.3	1,865	21.4
1	2	58	12.1	189	26.5
2	0	1,977	26.2	7,016	24.6
2	1	89	20.2	220	31.8
3	0	273	24.9	773	26.4
<b>Total*</b>		<b>3,982</b>	<b>22.9</b>	<b>14,825</b>	<b>22.0</b>

\*) In 1,733 cases, resulting in an additional 1,086 pregnancies, no information is available on the preceding treatment.

## Miscarriage (MISC) Rates as a Function of Female Age and Number of Embryos Transferred 2014

Prospective Data

### IVF, ICSI

Age in Years	1 Embryo		2 Embryos		3 Embryos		Total	
	CP	MISC/CP %	CP	MISC/CP %	CP	MISC/CP %	CP	MISC/CP %
<= 24	15	0.0	88	10.2	1	0.0	104	10.2
25 – 29	192	9.9	1,826	16.3	81	14.8	2,099	10.5
30 – 34	465	14.6	4,712	15.9	375	18.1	5,552	12.4
35 – 39	636	18.6	4,090	21.0	596	22.7	5,322	16.7
40 – 44	197	35.5	968	33.0	401	32.9	1,566	31.2
>= 45	5	40.0	13	53.8	17	47.1	35	48.2
<b>Total</b>	<b>1,510</b>	<b>18.3</b>	<b>11,697</b>	<b>19.1</b>	<b>1,471</b>	<b>24.1</b>	<b>14,678</b>	<b>15.9</b>

### Cryo Transfer

Age in Years	1 Embryo		2 Embryos		3 Embryos		Total	
	CP	MISC/CP %	CP	MISC/CP %	CP	MISC/CP %	CP	MISC/CP %
<= 24	6	0.0	19	21.1	4	0.0	29	13.8
25 – 29	45	17.8	425	21.2	54	22.2	524	21.0
30 – 34	218	17.4	1,402	18.4	145	19.3	1,765	18.4
35 – 39	181	21.5	1,436	26.1	196	18.9	1,813	24.9
40 – 44	72	26.4	348	27.3	91	34.1	511	28.4
>= 45	0	0.0	12	41.7	7	42.9	19	42.1
<b>Total</b>	<b>522</b>	<b>20.8</b>	<b>3,642</b>	<b>24.9</b>	<b>497</b>	<b>23.9</b>	<b>4,661</b>	<b>22.0</b>

# Clinical Pregnancy Rate (CPR) as a Function of the Stimulation Protocol 2015

Prospective Data

## IVF

	u-FSH	rec-FSH	hMG	recLH and recFSH	recFSH and hMG	Other*	No Information	Total	Perc. %
<b>Short GnRHa</b>	3	165	356	32	108	2	5	671	6.3
Transfer Rate (%)	0.0	94.2	92.1	94.2	94.2	50.0	100.0	94.2	
CP/ET (%)	0.0	32.6	28.4	31.5	21.8	0.0	20.0	27.3	
<b>Long GnRHa</b>	101	1,205	531	227	373	6	4	2,447	23.0
Transfer Rate (%)	91.0	90.1	93.6	89.9	93.2	100.0	75.0	91.0	
CP/ET (%)	30.7	39.4	33.0	36.0	32.2	66.7	33.3	36.9	
<b>No GnRHa-Ana.</b>	7	236	125	55	119	17	185	744	7.0
Transfer Rate (%)	33.3	91.3	90.5	97.0	84.0	88.9	82.7	88.2	
CP/ET (%)	0.0	32.4	23.9	31.1	30.2	0.0	13.9	26.9	
<b>GnRHa-Antag.</b>	121	3,945	1,241	698	702	49	31	6,787	63.7
Transfer Rate (%)	92.8	86.4	87.1	85.0	86.4	83.4	64.3	86.4	
CP/ET (%)	27.5	35.4	29.9	27.7	32.7	17.2	20.8	33.1	
<b>Summe</b>	<b>232</b>	<b>5,551</b>	<b>2,253</b>	<b>1,012</b>	<b>1,302</b>	<b>74</b>	<b>225</b>	<b>10,649</b>	<b>100.0</b>

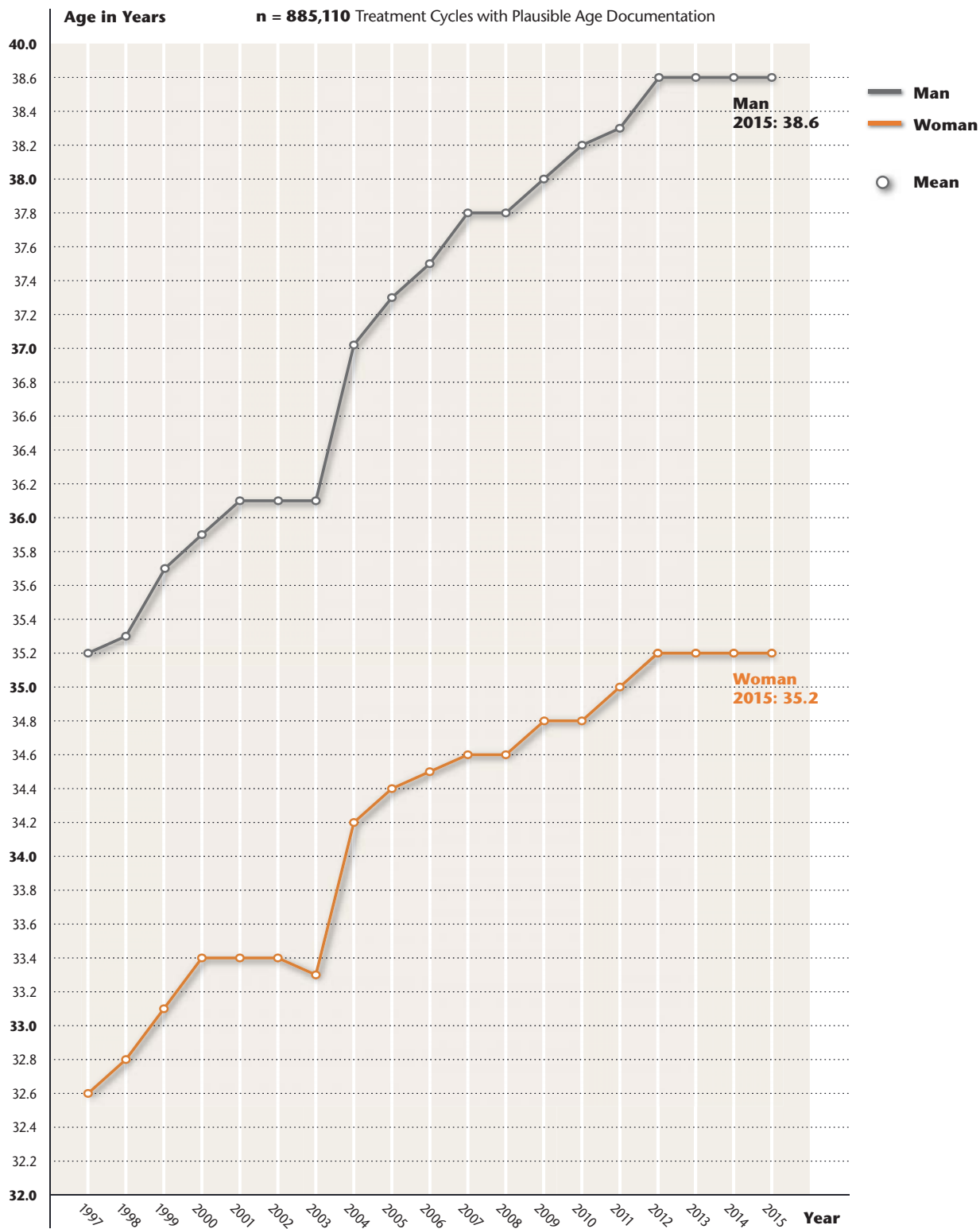
## ICSI

	u-FSH	rec-FSH	hMG	recLH and recFSH	recFSH and hMG	Other*	No Information	Total	Perc. %
<b>Short GnRHa</b>	35	616	534	121	354	26	5	1,691	5.0
Transfer Rate (%)	82.9	92.0	92.1	91.1	98.9	55.7	100.0	91.9	
CP/ET (%)	6.7	26.0	26.0	19.9	20.1	4.6	16.7	24.0	
<b>Long GnRHa</b>	146	3,957	1,735	909	1,847	125	5	8,724	25.5
Transfer Rate (%)	94.0	93.7	94.6	93.3	90.2	89.8	77.8	93.2	
CP/ET (%)	36.4	36.7	31.4	35.3	30.5	26.8	14.3	33.4	
<b>No GnRHa-Ana.</b>	21	856	454	225	510	7	1,027	3,100	9.1
Transfer Rate (%)	90.3	90.5	88.2	88.2	82.5	58.3	84.1	86.4	
CP/ET (%)	28.6	32.6	30.2	28.9	31.2	28.6	22.9	28.7	
<b>GnRHa-Antag.</b>	234	11,324	3,247	2,701	2,938	41	145	20,630	60.4
Transfer Rate (%)	90.4	90.0	89.6	86.0	83.9	84.6	77.7	88.9	
CP/ET (%)	23.6	34.1	25.9	28.6	28.3	7.3	20.1	31.1	
<b>Summe</b>	<b>436</b>	<b>16,753</b>	<b>5,970</b>	<b>3,956</b>	<b>5,649</b>	<b>199</b>	<b>1,182</b>	<b>34,145</b>	<b>100.0</b>

\*) e.g. u-FSH and hMG, Clomifen/rec-FSH, Clomifen/hMG etc.

# Mean Age for Women and Men 1997 – 2015

IVF, ICSI, IVF/ICSI – Prospective and Retrospective Data



# Children Born 1997–2014

Prospective and Retrospective Data

## Total (IVF, ICSI, IVF/ICSI, Cryo Transfer)

	Singletons		Twins		Triplets		Quadruplets		Total
	n	%	n	%	n	%	n	%	n
<b>2001</b>	7,795	62.2	4,288	34.2	450	3.6	0	-	12,533
*	(7,764)	(62.3)	(4,248)	(34.1)	(444)	(3.6)	(0)	-	(12,456)
<b>2002</b>	8,930	63.8	4,662	33.3	387	2.8	8	0.1	13,987
*	(8,902)	(64.0)	(4,615)	(33.2)	(382)	(2.8)	(7)	(0.1)	(13,906)
<b>2003</b>	11,922	63.2	6,334	33.6	597	3.2	24	0.1	18,877
*	(11,887)	(63.5)	(6,237)	(33.3)	(578)	(3.1)	(24)	(0.1)	(18,726)
<b>2004</b>	6,891	65.6	3,336	31.8	273	2.6	0	-	10,500
*	(6,869)	(65.8)	(3,306)	(31.7)	(262)	(2.5)	(0)	-	(10,437)
<b>2005</b>	7,038	65.8	3,440	32.1	213	2.0	12	0.1	10,703
*	(7,020)	(65.9)	(3,408)	(32.0)	(209)	(2.0)	(11)	(0.1)	(10,648)
<b>2006</b>	7,419	66.9	3,450	31.1	222	2.0	4	0.0	11,095
*	(7,402)	(67.1)	(3,417)	(31.0)	(202)	(1.8)	(4)	(0.0)	(11,025)
<b>2007</b>	8,407	66.4	4,976	32.2	183	1.4	4	0.0	12,670
*	(8,364)	(66.5)	(4,043)	(32.1)	(176)	(1.4)	(4)	(0.0)	(12,587)
<b>2008</b>	8,444	65.8	4,142	32.3	240	1.9	8	0.1	12,834
*	(8,416)	(66.1)	(4,084)	(32.1)	(230)	(1.8)	(8)	(0.1)	(12,738)
<b>2009</b>	9,016	67.3	4,152	31.0	216	1.6	8	0.1	13,392
*	(8,969)	(67.4)	(4,114)	(30.9)	(213)	(1.6)	(8)	(0.1)	(13,304)
<b>2010</b>	8,619	66.2	4,156	31.9	249	1.9	0	-	13,024
*	(8,566)	(66.4)	(4,105)	(31.8)	(239)	(1.9)	(0)	-	(12,910)
<b>2011</b>	9,388	63.1	5,131	34.6	301	2.0	0	-	14,820
*	(9,358)	(63.6)	(5,074)	(34.5)	(294)	(2.0)	(0)	-	(14,726)
<b>2012</b>	10,188	66.4	4,906	32.0	248	1.6	0	-	15,342
*	(10,158)	(66.5)	(4,880)	(31.9)	(246)	(1.6)	(0)	-	(15,284)
<b>2013</b>	11,713	64.9	6,003	33.3	326	1.8	6	0.0	18,048
*	(11,679)	(65.1)	(5,944)	(33.1)	(312)	(1.8)	(4)	(0.0)	(17,939)
<b>2014</b>	12,530	65.5	6,304	32.9	294	1.5	12	0.1	19,140
*	(12,478)	(65.6)	(6,246)	(32.8)	(294)	(1.5)	(12)	(0.1)	(19,030)

\*) The values in brackets indicate live births. Totalling 1997 – 2014:  
150,584 (150,409) singletons, 76,560 (75,484) twins, 6,501 (6,317) triplets, Vierlinge 104 (97) quadruplets. In total: 233,749 (232,307)

**KREFELD**  
Population of 233,034

**HALLE(SAALE)**  
Population of 237,858

**233,749**

Children born 1997–2014

# Children as a Function of Week of Gestation (WoG) and Birth Weight (BW) 2014\*

Total (IVF, ICSI, IFV/ICSI, Cryo Transfer)

## Singletons 2014

WoG	<25	25	26	27	28	29	30	31	32	33	34	35	36	37	38	39	40	41	>41	Total
n	50	28	19	26	40	39	46	67	69	114	173	276	545	1,069	2,122	2,983	2,866	1,651	295	12,478
BW p25	553	643	707	929	1,036	1,169	1,270	1,531	1,979	2,154	2,251	2,530	2,680	2,833	2,948	3,054	3,124	3,189	3,303	3,004
BW Median	662	728	930	1,031	1,193	1,355	1,696	1,896	2,340	2,618	2,709	2,965	3,089	3,276	3,377	3,485	3,523	3,561	3,635	3,390
BW p75	895	971	1,170	1,415	1,517	1,701	2,236	2,613	2,798	3,200	3,207	3,490	3,614	3,758	3,837	4,002	4,030	4,036	4,039	3,970

**Percentiles 2014: p25 = 38th WoG, p50 = 39th WoG, p75 = 40th WoG;**

Percentiles 1997–2014: p25 = 38th WoG, p50 = 39th WoG, p75 = 40th WoG

Proportion of children born before the completion of the 37th WoG: 20.5%

## Twins 2014

WoG	<25	25	26	27	28	29	30	31	32	33	34	35	36	37	38	39	40	Total**
n	106	43	44	63	65	89	148	153	230	362	551	749	1,082	1,294	892	289	72	6,246
BW p25	516	585	916	1,090	1,004	1,195	1,330	1,539	1,603	1,899	2,001	2,200	2,347	2,330	2,489	2,634	2,784	2,105
BW Median	617	849	1,026	1,188	1,233	1,491	1,582	1,921	1,923	2,103	2,295	2,487	2,596	2,649	2,720	2,871	2,982	2,510
BW p75	797	916	1,136	1,297	1,462	1,668	1,978	2,158	2,272	2,371	2,618	2,813	2,934	2,957	3,030	3,053	3,252	2,860

**Percentiles 2014: p25 = 34th WoG, p50 = 36th WoG, p75 = 37th WoG;**

Percentiles 1997–2014: p25 = 34th WoG, p50 = 36th WoG, p75 = 37th WoG

Proportion of children born before the completion of the 37th WoG: 79.7%

\*\*\*) The total contains 14 cases with a WoG > 40

## Triplets 2014

WoG	24	25	26	27	28	29	30	31	32	33	34	35	Total***
n	10	10	3	6	19	16	32	44	50	54	44	16	306
BW p25	348	812	813	775	750	1,123	1,271	1,562	1,695	1,537	1,897	1,751	1,290
BW Median	457	900	821	902	963	1,112	1,405	1,633	1,764	1,739	2,085	2,275	1,720
BW p75	598	1,006	1,010	1,038	1,206	1,112	1,557	2,017	1,891	1,908	2,282	2,492	2,005

**Percentiles 2014: p25 = 30th WoG, p50 = 32nd WoG, p75 = 33rd WoG;**

Percentiles 1997–2014: p25 = 30th WoG, p50 = 32nd WoG, p75 = 33rd WoG

Proportion of children born before the completion of the 37th WoG: 99.3%

\*\*\*) The total contains 2 cases with a WoG > 35

\*) Children with plausible birth weight and week of gestation, using prospective and retrospective data

# Ovarian Hyperstimulation Syndrome (OHSS) as a Function of the Stimulation Protocol 2015

IVF, ICSI, IVF/ICSI – Prospective Data

	Stimulation	%	Oocytes Retrieved	OHSS III	OHSS III/Stim %
<b>Short GnRH</b>	3,412	5.4	6.3	1	0.03
FSH only	1,398		7.2	1	0.03
hMG only	1,142		6.7	0	-
FSH + hMG	629		6.5	0	-
Other	221		2.6	0	-
No Information	22		2.5	0	-
<b>Long GnRH</b>	12,678	20.2	9.8	65	0.50
FSH only	7,313		10.5	30	0.23
hMG only	2,559		8.1	3	0.02
FSH + hMG	2,727		9.5	28	0.21
Other	75		7.4	4	0.03
No Information	4		11.4	0	-
<b>No Analoga</b>	7,351	11.7	5.4	4	0.07
FSH only	2,269		6.7	0	-
hMG only	1,394		5.3	1	0.02
FSH + hMG	987		7.9	0	-
Other	2,683		3.6	3	0.05
No Information	18		2.1	0	-
<b>GnRH-Antagonists</b>	39,276	62.6	8.9	110	0.28
FSH only	26,635		10.5	76	0.19
hMG only	6,739		5.9	11	0.03
FSH + hMG	4,987		7.8	19	0.05
Other	657		10.7	4	0.01
No Information	258		5.1	0	-
<b>Total</b>	<b>62,717</b>	<b>100.0</b>	<b>8.5</b>	<b>180</b>	<b>0.29</b>

# Complications as a Function of Ovum Pick-up (OPU) 2015

Prospective Data

	Total OPU's	58,170	100.0%
No Information	0	-	
No Complications	57,769	99.3%	
<b>Complications</b>	<b>401</b>	<b>0.7%</b>	

Complications	n	%
Vaginal Bleeding	259	64.6
Intraabdom. Bleeding	57	14.2
Intestinal Tract Injury	5	1.2
Peritonitis	1	0.3
Hospitalisation	10	2.5
Surgery	27	6.7
Other	42	10.5
<b>Total</b>	<b>401</b>	<b>100.0</b>

# List of Registry Members Contributing to the 2015 D.I.R Annual



## Kinderwunschzentrum Dresden

Praxisklinik Dr. med. H.-J. Held  
Dr. med. Hans-Jürgen Held  
Prager Straße 8 a  
01069 Dresden  
T: 0351-501400-0, F: 0351-501400-28  
info@ivf-dresden.de  
www.ivf-dresden.de

## Gynäkologische Endokrinologie und Reproduktionsmedizin der Universitätsfrauenklinik Dresden

Dr. med. Maren Goeckenjan, Prof. Dr. med. Henry Alexander, Ines Tietze  
Fetscherstraße 74  
01307 Dresden  
T: 0351-4583491, F: 0351-4585351  
gyn-ivf@uniklinikum-dresden.de  
www.uniklinikum-dresden.de/gyn

## Kinderwunschzentrum Leipzig-Chemnitz

Dipl.-Med. Jens-Peter Reiher, Dr. med. Petra Jogschies, Dörte Geistert, Laila Shugair  
Goldschmidtstraße 30  
04103 Leipzig  
T: 0341-141200, F: 0341-1412081  
info@ivf-leipzig.de  
www.ivf-leipzig.de

## Kinderwunschzentrum Praxisklinik City Leipzig

Dr. med. Astrid Gabert, Dr. med. Katharina Bauer, Dr. med. Isabel Schwandt, Jana Sonneck, Dr. med. Doreen Marx, Prof. Dr. med. Henry Alexander  
Petersstraße 1  
04109 Leipzig  
T: 0341-215855-0, F: 0341-215855-17  
info@ivf-city-leipzig.de  
www.ivf-city-leipzig.de

## Universitätsklinikum Halle (Saale)

Zentrum für Reproduktionsmedizin und Andrologie  
Univ.-Prof. Dr. med. Hermann M. Behre, Dr. med. Petra Kaltwasser, Dr. med. Solveig Köller, Dr. rer. nat. Ewald Seliger, Dr. rer. nat. Thomas Greither  
Ernst-Grube-Straße 40  
06120 Halle (Saale)  
T: 0345-557-4782, F: 0345-557-4788  
zra@uk-halle.de  
www.kinderwunsch-halle.de

## Universitätsklinikum Jena

Klinik für Frauenheilkunde und Geburtshilfe  
Prof. Dr. med. Ingo Runnebaum, Dr. med. Helen Gonnert, Dr. med. Kristin Nicolaus  
Bachstraße 18  
07743 Jena  
T: 03641-933529, F: 03641-933351  
kinderwunsch@med.uni-jena.de  
www.uni-jena.de/ufk

## Zentrum für Reproduktionsmedizin Jena & Erfurt

PD Dr. med. habil. Heidi Fritzsche, Dr. med. Andreas Fritzsche  
Markt 4  
07743 Jena  
Juri-Gagarin-Ring 96 - 98  
99084 Erfurt  
T: 03641- 47444-0, F: 03641- 47444-72  
information@kinderwunschnet.de  
www.kinderwunschnet.de

## Kinderwunschzentrum Leipzig-Chemnitz

Dipl.-Med. Jens-Peter Reiher, Dr. med. Petra Jogschies, Dörte Geistert, Laila Shugair  
Jakobikirchplatz 4  
09111 Chemnitz  
T: 0371-5034980, F: 0371-50349881  
info@ivf-chemnitz.de  
www.ivf-chemnitz.de

## Kinderwunschzentrum Praxisklinik City Leipzig Standort Chemnitz

Dr. med. Astrid Gabert, Dr. med. Katharina Bauer, Dr. med. Isabel Schwandt, Jana Sonneck, Dr. med. Doreen Marx  
Flemmingstraße 2 a  
09116 Chemnitz  
T: 0371-433130-0, F: 0371-433130-17  
info@kinderwunschzentrum-chemnitz.de  
www.ivf-city-leipzig.de

## Kinderwunschteam Berlin

Kinderwunsch- und Endometriosezentrum  
Dr. med. Gülden Halis, Dr. med. Friederike Weber, Dr. med. Kathrin Wohlfarth  
Friedrichstraße 79  
10117 Berlin  
T: 030-2065805-0, F: 030-2065805-20  
info@kinderwunschteam.berlin  
www.kinderwunschteam.berlin

## Kinderwunschzentrum am Potsdamer Platz

Dr. med. Hanadi Awwadeh, Dr. med. Anja Mutz  
Leipziger Platz 7  
10117 Berlin  
T: 030-2008950-0, F: 030-2008950-99  
info@kinderwunsch-potsdamerplatz.de  
www.kinderwunsch-potsdamerplatz.de

## MVZ Vivaneo Praxisklinik Sydow Berlin GmbH

Dr. med. Peter Sydow, Dr. med. Carmen Sydow, Dr. med. Ulrike Bergmann-Hensel, Dr. med. Birgit Bestvater, Dr. med. Susann Kreuz, Dr. med. Dagmar Geiß  
Kronenstraße 55 - 58  
10117 Berlin  
T: 030-20626720, F: 030-206267218  
info@praxisklinik-sydow.de  
www.vivaneo-kinderwunsch.de/praxisklinik-sydow

## Praxis für Fertilität – Kinderwunsch- und Endometriose-Zentrum Berlin

Dr. med. David J. Peet, Dr. med. Wibke Wilkening, Constanze Glaser  
Friedrichstraße 150  
10117 Berlin  
T: 030-26302310-0, F: 030-26302310-19  
info@fertilitaet.de  
www.fertilitaet.de

## Hogyn MVZ GmbH

Wunschkind Berlin  
Dr. med. Björn Horstkamp, PD Dr. med. Bernd Krause, Dr. med. Petra Rudolph, Dr. med. Bettina Pfüller, Prof. Dr. med. Horst Lübbert  
Uhlandstraße 20 - 25  
10623 Berlin  
T: 030-880349056, F: 030-880349050  
info@wunschkind-berlin.de  
www.wunschkind-berlin.de

## Kinderwunsch- und Endometriosezentrum Berlin

Akademische Lehrpraxis der Charité  
Dr. med. Reinhard Hannen, Dr. med. Christian Friedrich Stoll  
Landgrafenstraße 14  
10787 Berlin  
T: 030-263983-0, F: 030-263983-99  
info@kinderwunschzentrum.de  
www.kinderwunschzentrum.de

## Reproduktionsmedizinisches Zentrum

im Lützow Center GLC  
Dr. med. Detlef H.G. Temme  
Wichmannstraße 5  
10787 Berlin  
T: 030-2309980, F: 030-23099830  
info@ivf-berlin.de  
www.ivf-berlin.de

## Kinderwunschzentrum an der Gedächtniskirche

Dr. med. Matthias Bloechle, Dr. med. Silke Marr  
Rankestraße 34  
10789 Berlin  
T: 030-219092-0, F: 030-219092-99  
info@kinderwunsch-berlin.de  
www.kinderwunsch-berlin.de

## Kinderwunschzentrum am Innsbrucker Platz Berlin

Babette Remberg, Dr. med. Susanne Tewordt-Thyselius  
Hauptstraße 65  
12159 Berlin  
T: 030-85757930, F: 030-85757935  
praxis@kinderwunschpraxis-berlin.de  
www.kinderwunschpraxis-berlin.de

## Praxis für Kinderwunschtherapie Berlin Helle-Mitte

Dr. med. Muna Zaghoul-Abu Dakah, Dr. med. Swetlana Hoffmann, Dr. med. Gothild Matheus  
Stendaler Straße 24  
12627 Berlin  
T: 030-992779-0, F: 030-99277922  
info@berliner-kinderwunsch.de  
www.berliner-kinderwunsch.de

**Fertility Center Berlin – Auf dem Gelände der DRK Kliniken Westend**

Dr. med. Andreas Tandler-Schneider, Prof. Dr. med. Heribert Kantenich, Dr. med. Gabriele Stief, Dr. med. Anette Siemann, Dr. med. Marina Werling, Isabelle von Plauen  
Spandauer Damm 130  
14050 Berlin  
T: 030-233208110, F: 030-233208119  
info@fertilitycenter-berlin.de  
www.fertilitycenterberlin.de

**Kinderwunschärzte Berlin GbR**

Zentrum für Kinderwunschbehandlung und Fertilitätsprotektion  
Dr. med. Andreas Jantke, Dr. med. Anna Stegelmann  
Clayallee 225 a  
14195 Berlin  
T: 030-814576565, F: 030-814576566  
info@kinderwunschaerzte-berlin.de  
www.kinderwunschaerzte-berlin.de

**Kinderwunschzentrum Potsdam**

Dr. med. Kay-Thomas Moeller, Dr. med. Kathleen Linca  
Babelsberger Straße 8  
14473 Potsdam  
T: 0331-23189292, F: 0331-23189293  
info@kinderwunsch-potsdam.de  
www.kinderwunsch-potsdam.de

**Praxiszentrum Frauenheilkunde Rostock**

PD Dr. med. Heiner Müller, Annette Busecke, Anja Bossow, Dr. med. Anne Koenen  
Südring 81  
18059 Rostock  
T: 0381-4401-2030, F: 0381-4401-2031  
info@ivf-rostock.de  
www.ivf-rostock.de

**amedes experts**

Facharzt-Zentrum für Kinderwunsch, Pränatale Medizin, Endokrinologie und Osteologie  
Hamburg  
Prof. Dr. med. Frank Nawroth, PD Dr. med. Michael Graf, Dr. med. Sabine Neubeck, Prof. Dr. med. Barbara Sonntag, Dr. med. Astrid Dangel, Prof. Dr. med. Klaus Diedrich, Prof. Dr. med. Christoph Dorn, Dr. med. Cathrin Grave, Dr. med. Ines Doll, Dr. med. Ute Hugo, Dr. med. Imke Mebes, PD Dr. med. Sabine Segerer  
Mönckebergstraße 10  
20095 Hamburg  
T: 0800-5891688, F: 040-380708310  
kinderwunsch-hamburg@amedes-group.com  
www.amedes-experts-hamburg.de

**MVZ Fertility Center Hamburg GmbH**

Dr. med. (IL) Robert Fischer, Dr. med. Kay Christian Löbbbeck, Prof. Dr. med. Wolfgang Schulze, Dr. med. Katja Schwenn  
Speersort 4  
20095 Hamburg  
T: 040-30804400, F: 040-30804952  
fch@kinderwunsch-hamburg.de  
www.kinderwunsch-hamburg.de

**Kinderwunsch Valentinshof**

Dr. med. Anja Dawson, PD Dr. med. Ulrich A. Knuth  
Caffamacherreihe 8  
20355 Hamburg  
T: 040-709751-10, F: 040-70975139  
empfang@kinderwunsch-valentinshof.de  
www.kinderwunsch-valentinshof.de

**Kinderwunschzentrum Altonaer Straße im Gynaekologikum Hamburg**

Dr. med. Annick Horn, Dr. med. Wolf Michel, Dr. med. Tim Cordes, Prof. Dr. med. Markus S. Kupka  
Altonaer Straße 59  
20357 Hamburg  
T: 040-306836-0, F: 040-306836-69  
info@ivf-hamburg.de  
www.ivf-hamburg.de

**Kinderwunschzentrum Hafencity Hamburg**

Dr. med. Ekbert Göhmann, Dr. med. Thomas Krämer  
Überseeallee 1  
20457 Hamburg  
T: 040-30088-100, F: 040-30088-1010  
kontakt@kinderwunsch-hafencity.de  
www.kinderwunsch-hafencity.de

**Kinderwunsch Praxisklinik Fleetinsel Hamburg**

Tip/Dr. univ. Ist. Semsettin E. Koçak, Dr. med. Peter List, Cemile Ballnus, Dr. rer. nat. Uwe Weidner  
Admiralitätsstraße 4  
20459 Hamburg  
T: 040-38605553, F: 040-38605551  
kocak@kinderwunschzentrum-hamburg.de  
www.kinderwunschzentrum-hamburg.de

**Universitäres Kinderwunschzentrum Lübeck und Manhagen**

Zentrum für Gynäkologische Endokrinologie und Reproduktionsmedizin am Universitätsklinikum Schleswig-Holstein  
Universitäre Kinderwunschzentren GmbH  
Prof. Dr. med. Georg Griesinger, M. Sc., PD Dr. med. Askan Schultze-Mosgau, Dr. med. Marion Depenbusch, Dr. med. Kyra von Horn, Dr. med. Tina Osterholz-Zaleski  
Ratzeburger Allee 111 - 125  
23562 Lübeck  
T: 0451-505-778-10, F: 0451-505-778-299  
kinderwunsch@uksh.de  
www.kinderwunsch-luebeck.de

**fertilitycenterkiel**

Dr. med. Martin Völckers, Dr. med. Antonia Wenners, Dr. med. Nevin Inan  
Prüner Gang 15  
24103 Kiel  
T: 0431-9741333, F: 0431-9741322  
info@fertilitycenter.de  
www.fertilitycenter.de

**Universitäres Kinderwunschzentrum Kiel**

PD Dr. med. Sören von Otte, Prof. Dr. med. Lieselotte Mettler, Dr. med. Wiebe Junkers  
Arnold-Heller-Straße 3  
Haus 24  
24105 Kiel  
T: 0431-5978877, F: 0431-5978878  
kinderwunsch-kiel@uksh.de  
www.uksh.de/kinderwunsch-kiel

**KinderwunschKiel**

Dr. med. Kurt Brandenburg, Dr. med. Angela Carstensen, Dr. med. Kirsten Schem, Dr. sc. agr. Annette Bonhoff  
Im Brauereiviertel 5  
24118 Kiel  
T: 0431-553433, F: 0431-5192745  
info@kinderwunschkiel.de  
www.kinderwunschkiel.de

**Team Kinderwunsch Oldenburg**

Dr. med. Saif Jibril, Dr. med. Gerhard Pohlig  
Leo-Trepp-Straße 5  
26121 Oldenburg  
T: 0441-2489091, F: 0441-2480611  
tko@telemed.de  
www.teamkinderwunsch.de

**Tagesklinik Oldenburg – Zentrum für Kinderwunschbehandlung**

Dr. med. Jörg Hennefründ, Dr. med. Heike Boppert, Dr. med. Michael Heeder, Dr. med. Firas Alhalabieh  
Achterstraße 21  
26122 Oldenburg  
T: 0441-922700, F: 0441-9227028  
info@tagesklinik-oldenburg.de  
www.tagesklinik-oldenburg.de

**Kinderwunschzentrum Ostfriesland**

Dr. med. Grita Hasselbach  
Hafenstraße 6 d  
26789 Leer (Ostfriesland)  
T: 0491-45425-0, F: 0491-45425-10  
info@kinderwunschestfriesland.de  
www.kinderwunschestfriesland.de

**Kinderwunsch Bremen**

Dr. med. Achim von Stutterheim, Tanja Finger, Dr. med. Nina Wegmann, Dr. med. Anjarasoa Jung  
Emmastraße 220  
28213 Bremen  
T: 0421-224910, F: 0421-2249122  
info@kinderwunschbremen.de  
www.kinderwunschbremen.de

**BZF-Bremer Zentrum für Fortpflanzungsmedizin**

Dr. med. Olaf Drost, Prof. Dr. med. Ernst Heinrich Schmidt, Dr. sc. hum. Martin Pinteric  
Gröpelinger Heerstraße 406 - 408  
28239 Bremen  
T: 0421-6102-1212, F: 0421-6102-1213  
info@icsi.de  
www.icsi.de



**Team Kinderwunsch Hannover**

Dr. med. Nabil Saymé, Dipl.-Biol. Thomas Krebs  
Brühlstraße 19  
30169 Hannover  
T: 0511-313095, F: 0511-313096  
info@team-kinderwunsch-hannover.de  
www.team-kinderwunsch-hannover.de

**Medizinische Hochschule Hannover, Frauenklinik**

Bereich Gynäkologische Endokrinologie und Reproduktionsmedizin, OE 6410  
PD Dr. med. Cordula Schippert, Dr. med. Guillermo-José Garcia-Rocha, PD Dr. med. Frauke von Versen-Höyneck, Dr. med. Jan-Simon Lanowski, Dr. med. Kristina Drinkut  
Carl-Neuberg-Straße 1  
30625 Hannover  
T: 0511-532-6099, F: 0511-532-6094  
schippert.cordula@mh-hannover.de  
www.mh-hannover.de/11327.html

**Kinderwunschzentrum Langenhagen - Wolfsburg MVZ**

Dr. med. Martina Müseler-Albers, Dr. med. Thilo Schill, Dr. med. Natascha Peper, Dr. med. Christina Nardmann, Christian Bell, Kristin Remke  
Ostpassage 9  
30853 Langenhagen  
Sauerbruchstraße 7  
38440 Wolfsburg  
T: 0511-972300, F: 0511-9723018  
praxis@kinderwunsch-langenhagen.de  
www.kinderwunsch-langenhagen.de

**Zentrum für Reproduktionsmedizin und Humangenetik**

Dr. med. Franz-J. Algermissen, Dr. med. Georg Wilke, Dr. med. Notker Graf, Anja Scheffer  
Gartenstraße 18 - 20  
31141 Hildesheim  
T: 05121-20679-30, F: 05121-20679-71  
praxis@kinderwunsch-hildesheim.de  
www.kinderwunsch-hildesheim.de

**MVZ wagnerstibbe für Gynäkologie, Reproduktionsmedizin, Zytologie, Pathologie und Innere Medizin GmbH**

Dr. med. Christina Baßler, Dr. med. Elmar Breitbach, Dr. med. Arvind Chandra, Dr. med. Nadine Kundu, Dr. med. Franziska Wegener  
Hannoversche Straße 24  
31848 Bad Münder  
T: : 05042-940360, F: 05042-940308  
info@kinderwunsch.com  
www.kinderwunsch.com

**Zentrum für Kinderwunschbehandlung und Praenataldiagnostik Minden**

Dr. med. Michael Dumschat, Dr. med. Ralf Menkhaus, Dr. med. Stefanie Strunk  
Simeonsplatz 17  
32423 Minden  
T: 0571-972600, F: 0571-9726099  
info@kinderwunsch-minden.net  
www.kinderwunsch.net

**Praxisklinik Prof. Volz**

Prof. Dr. med. Joachim Volz, PD Dr. med. Stefanie Volz-Köster  
Adenauer Platz 7  
33602 Bielefeld  
T: 0521-9883060, F: 0521-98830622  
kinderwunsch@frog.de.com  
www.frog.de.com

**Bielefeld Fertility-Center – Zentrum für Reproduktionsmedizin und Gynäkologische Endokrinologie**

Paul A. Ebert, Dr. med. Karl Völklein, Beata Szypajlo, Dr. med. Wiebke Rübberdt  
Werther Straße 266  
33619 Bielefeld  
T: 0521-101005, F: 0521-101079  
praxis@kinderwunsch-bielefeld.de  
www.kinderwunsch-bielefeld.de

**MVZ für Reproduktionsmedizin am Klinikum Kassel**

Dr. med. Marc Janos Willi, Dr. med. Oswald Schmidt, Prof. Dr. (UBAs) Miguel J. Hinrichsen  
Mönchebergstraße 41 - 43, Haus F  
34125 Kassel  
T: 0561-980-2980, F: 0561-9802981  
info@kinderwunsch-kassel.de  
www.kinderwunsch-kassel.de

**RepKo - Reproduktionsmedizinisches Kompetenzzentrum am Universitätsklinikum Gießen & Marburg GmbH**

PD Dr. med. Volker Ziller, Prof. Dr. med. Uwe Wagner  
Baldingerstraße  
35043 Marburg  
T: 06421-58-61330, F: 06421-5864564  
Klinikstraße 33  
35392 Gießen  
T: 0641-98545207, F: 0641-98557099  
kinderwunsch@med.uni-marburg.de  
www.repko-ukgm.de

**Kinderwunschzentrum Mittelhessen**

Dr. med. Amir Hajimohammad, Berthold Oels  
Sportparkstraße 9  
35578 Wetzlar  
T: 06441-2002020, F: 06441-20020299  
info@ivf-mh.de  
www.ivf-mh.de

**gyn-medicum Göttingen**

**Zentrum für Kinderwunsch**  
Dr. med. Monica Tobler, PD Dr. med. Andreas Schmutzler, Dr. sc. agr. Manuela Ropeter-Scharfenstein  
Waldweg 5  
37073 Göttingen  
T: 0551-41337, F: 0551-41722  
info@gyn-medicum.de  
www.gyn-medicum.de

**Kinderwunschzentrum Göttingen**

Dr. med. Rüdiger Moltrecht, Dr. med. Sabine Hübner, Dr. med. Thomas Welcker, Dr. med. Filiz Sakin-Kaindl, Dr. rer. nat. Heike Eckel, Dr. rer. nat. Stephanie Mittmann  
Kasseler Landstraße 25 a  
37081 Göttingen  
T: 0551-99888-0, F: 0551-99888-99  
info@kiwu-goettingen.de  
www.kiwu-goettingen.de

**Kinderwunschzentrum Magdeburg**

Dr. med. Evelyn Richter, Dr. med. Ingrid Nickel  
Ulrichplatz 1  
39104 Magdeburg  
T: 0391-662489-0, F: 0391-662489-29  
info@kiwumed.de  
www.kinderwunschzentrum-magdeburg.de

**Otto-von Guericke-Universität Magdeburg**

Universitätsklinik für Reproduktionsmedizin  
Prof. Dr. med. Prof. h. c. Jürgen Kleinstein, Carina Strecker  
Gerhart-Hauptmann-Straße 35  
39108 Magdeburg  
T: 0391-6717390, F: 0391-6717389  
juergen.kleinstein@med.ovgu.de  
www.krep.ovgu.de

**Kinderwunsch-Kö**

Dr. med. Martina Behler, Tanja Emde  
Königsallee 63 - 65  
40215 Düsseldorf  
T: 0211-3113550, F: 0211-31135522  
info@kinderwunsch-koe.de  
www.kinderwunsch-koe.de

**MVZ VivaNeo Kinderwunschzentrum Düsseldorf GmbH**

Dipl.-Med. Kersten Marx, Dr. med. Petra Hubert, Dr. Michael C.W. Scholtes, Ph. D., Dr. med. Selma Yildirim-Assaf, Dr. med. Ingrid Hass-Wenzel, Dr. med. Werner H. Fabry, Dr. med. Nilofar Roshandel, Dr. med. Therese Soepenber, Dr. Ralf Böhm  
Völklinger Straße 4  
40219 Düsseldorf  
T: 0211-90197-0, F: 0211-9019750  
info@vivaneo-duesseldorf.de  
www.vivaneo-kinderwunsch.de/  
kinderwunsch-duesseldorf

**UniKiD – Universitäres interdisziplinäres Kinderwunschzentrum Düsseldorf**

Prof. Dr. med. Jan-Steffen Krüssel, Dr. med. Nina Bachmann, Dr. med. Philippos Edimiris, Dr. med. Tanja Freundl-Schütt, Dr. med. Christoph Grewé, PD Dr. med. Alexandra Hess, Dr. med. Barbara Mikat-Drozdzyński, PD Dr. med. Andrea Schanz, Sonja Schu  
Moorenstraße 5  
40225 Düsseldorf  
T: 0211-8104060, F: 0211-811-6787  
info@unikid.de  
www.unikid.de

**pro-Kindwunsch – Kinderwunschzentrum Niederrhein**

Dr. med. Georg M. Döhmen, Dr. med. Thomas Schalk  
 Von-Groote-Straße 175  
 41066 Mönchengladbach  
 T: 02161-49686-0, F: 02161-49686-19  
 Melanchthonstraße 36  
 47805 Krefeld  
 T: 02151-150231-0, F: 02151-150231-1  
 info@pro-kindwunsch.de  
 www.pro-kindwunsch.de

**green-ivf – Grevenbroicher Endokrinologie & IVF-Zentrum**

Prof. Dr. med. Christian Gnoth, Dr. med. Kerstin Friol, Dr. med. Daniel Fehr, Dr. rer. nat. Caroline Schwarzer  
 Rheydter Straße 143  
 41515 Grevenbroich  
 T: 02181-4915-13, F: 02181-4915-34  
 praxis@green-ivf.de  
 www.green-ivf.de

**Bergisches Kinderwunschzentrum Remscheid**

Dr. med. Johannes Luckhaus, Dr. med. Anke Beerkotte  
 Elberfelder Straße 49  
 42853 Remscheid  
 T: 02191-79192-0, F: 02191-79192-39  
 mail@kinderwunsch-remscheid.de  
 www.kinderwunsch-remscheid.de

**Überörtliche Berufsausübungsgemeinschaft Kinderwunsch Dortmund, Siegen, Dorsten, Wuppertal GbR**

Prof. Dr. med. Stefan Dieterle, Dr. med. Andreas Neuer, Prof. Dr. med. Robert Greb, Dr. med. Katharina Möller-Morlang, Dr. med. Thomas von Ostrowski  
 Olpe 19  
 44135 Dortmund  
 T: 0231-557545-0, F: 0231-55754599  
 Hermelsbacher Weg 41  
 57072 Siegen  
 T: 0271-7701810, F: 0271-77018129  
 Südwall 15  
 46282 Dorsten  
 T: 02362-27001, F: 02362-27002  
 Hofaue 93  
 42103 Wuppertal  
 T: 0202-4789930, F: 0202-47899329  
 info@kinderwunschzentrum.org  
 www.kinderwunschzentrum.org

**novum – Zentrum für Reproduktionsmedizin Essen – Duisburg**

Prof. Dr. med. Thomas Katzorka, Dr. med. Susanne Wohlers, Najib N. R. Nassar, Dr. med. Sylvia Bartnitzki, Prof. Dr. med. Peter Bielfeld  
 Akazienallee 8 - 12  
 45127 Essen  
 T: 0201-29429-0, F: 0201-29429-14  
 Ärzteforum in der Tonhallenpassage  
 Friedrich-Wilhelm-Straße 71  
 47051 Duisburg  
 T: 0203-713958-0, F: 0203-713958-15  
 info@ivfzentrum.de  
 www.ivfzentrum.de

**REProVita - Kinderwunschzentrum Recklinghausen**

Dr. med. Cordula Pitone, Miriam Espeloer  
 Hertener Straße 29  
 45657 Recklinghausen  
 T: 02361-904188-0, F: 02361-904188-41  
 info@reprovita.de  
 www.reprovita.de

**Kinderwunschpraxis Gelsenkirchen**

Dr. med. Ute Czeromin, Dr. med. Ina Walter-Göbel  
 Wissenschaftspark, Pav. 8, 1. OG  
 Munscheidstraße 14  
 45886 Gelsenkirchen  
 T: 0209-167-1470, F: 0209-167-1471  
 info@kinderwunsch-gelsenkirchen.de  
 www.kinderwunsch-gelsenkirchen.de

**FCM Fertility Center Münsterland**

Dr. med. Ulrich Hilland  
 Crispinusstraße 12  
 46399 Bocholt  
 T: 02871-23943-43, F: 02871-23943-44  
 praxis@fcm-net.de  
 www.fcm-net.de

**Kinderwunschpraxis an der Promenade**

Dr. med. Andrea Mempel, Susanne Stratmann, Dr. rer. nat. Melanie Rickert-Föhring  
 Von-Vincke-Straße 14  
 48143 Münster  
 T: 0251-414312-0, F: 0251-414312-20  
 willkommen@kinderwunsch-promenade.de  
 www.kinderwunsch-promenade.de

**MVZ Kinderwunsch- und Hormonzentrum Münster GmbH**

Dr. med. Dr. rer. nat. Lutz Belkien, Dr. med. Caroline Niehoff, Prof. Dr. med. Axel Kamischke, Dr. med. Juliane Burchard  
 Hötteweg 5 - 7  
 48143 Münster  
 T: 0251-48267-0, F: 0251-48267-77  
 info@ivf-muenster.de  
 www.kinderwunschtherapie.de

**UKM Kinderwunschzentrum Universitätsklinikum Münster**

PD Dr. med. Andreas Schüring, Prof. Dr. med. Sabine Kliesch  
 Albert-Schweitzer-Campus 1, Gebäude D 11  
 48149 Münster  
 T: 0251-8358280, F: 0251-8348267  
 info-kinderwunsch@ukmuenster.de  
 www.kinderwunschzentrum.uk-muenster.de

**Zentrum für Kinderwunschbehandlung Osnabrück / Nordhorn**

Irene Coordes, Dr. med. Manfred Schneider  
 Rheiner Landstraße 93 - 95  
 49078 Osnabrück  
 Osnabrücker Straße 1  
 48529 Nordhorn  
 T: 0541-404500, F: 0541-4045040  
 info@kinderwunsch123.de  
 www.kinderwunsch123.de

**GMP Frauenheilkunde & Reproduktionsmedizin**

Dr. med. Dieter Struller, Dr. med. Christof Etien  
 Graf-Salm-Straße 10  
 50181 Bedburg, Erft  
 T: 02272-7778, F: 02272-7773  
 info@kinderwunsch-erft.de  
 www.kinderwunsch-erft.de

**MVZ PAN Institut für Endokrinologie und Reproduktionsmedizin**

Dr. med. Stefan Palm, Dr. med. Irene Pütz, Dr. med. Mirko Dannhof, PD Dr. med. Dolores Foth  
 Zeppelinstraße 1  
 Neumarkt Galerie  
 50667 Köln  
 T: 0221-2776-229, F: 0221-2776-201  
 repro@pan-klinik.de  
 www.mvz-pan-institut.de

**Klinik und Poliklinik für Frauenheilkunde und Geburtshilfe der Universität zu Köln**

Gynäkologische Endokrinologie und Reproduktionsmedizin  
 Prof. Dr. med. Gohar Rahimi  
 Kerpener Straße 34  
 50931 Köln  
 T: 0221-478-87550, F: 0221-478-6729  
 kinderwunsch-info@uk-koeln.de  
 www.frauenklinik.uk-koeln.de/  
 reproduktionsmedizin-kryokonservierung

**MVZ Amedes für IVF und Pränatalmedizin**

Dr. med. Markus Merzenich, Dr. med. Frank Bender, Dr. med. Birgit Krusenotto  
 Schönhauser Straße 3  
 50968 Köln  
 T: 0221-340307-0, F: 0221-340307-77  
 info@kinderwunschzentrum-koeln.de  
 www.kinderwunschzentrum-koeln.de

**Zentrum für Kinderwunschbehandlung Köln**

Eva Schwahn  
 Schönhauser Straße 3  
 50968 Köln  
 T: 0221-3402280, F: 0221-3406017  
 info@wunschkind-koeln.de  
 www.wunschkind-koeln.de

**Kinderwunschzentrum Aachen**

Dr. med. Klaus Grunwald  
 Kasernenstraße 25  
 52064 Aachen  
 T: 0241-99774140, F: 0241-99774144  
 kinderwunschzentrum@t-online.de  
 www.kinderwunsch-aachen.de

**Klinik für Gynäkologische Endokrinologie und Reproduktionsmedizin**

Uniklinik - RWTH Aachen  
 Prof. Dr. med. Joseph Neulen, Dr. med. Benjamin Rösing  
 Pauwelsstraße 30  
 52074 Aachen  
 T: 0241-8088971, F: 0241-8082518  
 gyn-endokrinologie@ukaachen.de  
 www.gyn-endokrinologie.ukaachen.de

**Universitätsklinikum Bonn – Gynäkologische Endokrinologie und Reproduktionsmedizin**

Prof. Dr. med. Hans H. van der Ven, Prof. Dr. med. Katrin van der Ven, Dr. med. Ulrike Bohlen, Dr. med. Marietta Kühr  
Sigmund-Freud-Straße 25  
53127 Bonn  
T: 0228-287-19186, F: 0228-28715795  
officerepro@ukb.uni-bonn.de  
www.kinderwunsch-uni-bonn.de

**Praxisklinik für Gynäkologische Endokrinologie und Reproduktionsmedizin**

PD Dr. Dr. med. Gernot Paul Prietl, Dr. med. Monika Prietl, Dr. med. Peter Heuschen  
Theaterplatz 18  
53177 Bonn-Bad Godesberg  
T: 0228-3503910, F: 0228-364892  
ivf@careme.de

**Kinderwunsch Praxisklinik Trier**

Dr. med. Mohsen Satari, Prof. Dr. med. Jürgen P. Hanker  
Wissenschaftspark (WIP)  
Max-Planck-Straße 15  
54296 Trier  
T: 0651-97906-0, F: 0651-97906-20  
info@kinderwunsch-trier.de  
www.kinderwunsch-trier.de

**Kinderwunsch Zentrum Mainz**

Dr. med. Robert Emig, Dr. med. Christine Molitor, Prof. Dr. med. Thomas Steck  
Fort Malakoff Park  
Rheinstraße 4  
55116 Mainz  
T: 06131-603020, F: 06131-6030210  
dr.emig@kwz-mz.de  
www.kinderwunschzentrum-mainz.de

**Kinderwunschzentrum der Universitätsmedizin Mainz**

Univ.-Prof. Dr. Rudolf Seufert M. Sc., Dr. Ruth Gomez, Dr. Kristina Bockmeyer, Dr. Rüdiger Schug  
Langenbeckstraße 1  
55131 Mainz  
T: 06131-173929  
Rudolf.Seufert@unimedizin-mainz.de  
www.wunschkind-mainz.de

**Kinderwunschzentrum Mittelrhein**

Dr. med. Josef Beran, Dr. med. Sebastian Hagelauer, Özgül Duman, Dr. Valentina Alupe  
Marktstraße 83  
56564 Neuwied  
Viktoriastraße 15  
56068 Koblenz  
T: 02631-3968-0, F: 02631-3968-29  
info@kinderwunsch-mittelrhein.de  
www.kinderwunsch-mittelrhein.de

**Freyja IVF Hagen**

Kinderwunsch- & Hormonzentrum  
Dr. med. Birgit Lühr  
Bahnhofstraße 1  
58095 Hagen  
T: 02331-7390421, F: 02331-7390425  
info@freyja-ivf.com  
www.kinderwunsch-hagen.de

**reproedicum**

Kinderwunschzentrum  
Reproduktionsmedizin - Gyn. Endokrinologie  
Prof. Dr. med. Dr. med. habil. Ernst Siebzehn-  
rühl, Dr. med. Anja Weidner  
Hanauer Landstraße 328 - 330  
60314 Frankfurt am Main  
T: 069-4260770, F: 069-42607710  
mail@reproedicum.de  
www.reproedicum.de

**Kinderwunschzentrum Frankfurt**

Prof. Dr. med. Prof. h. c. Eberhard Merz, Prof. Dr. med. Stefan Kißler, Dr. med. Marie-Theres Swayze, Dr. med. David Sauer, Ines Voß  
Steinbacher Hohl 2 - 26  
60488 Frankfurt am Main  
T: 069-7601-3611, F: 069-76013321  
info@kinderwunschzentrum-frankfurt.de  
www.kinderwunschzentrumfrankfurt.de

**Re • Pro • Gyn**

Gynäkologische Endokrinologie und Reproduktionsmedizin  
Universitätsklinikum Frankfurt  
PD Dr. med. Nicole Sängler, Dr. med. Annette Bachmann, Dr. med. Kristin Hawig, Dr. med. Liza Koch, Dr. med. Daniela Rebhan  
Theodor-Stern-Kai 7  
60590 Frankfurt am Main  
T: 069-6301-5708, F: 069-6301-7120  
info.ivf@kgu.de  
www.kgu.de/zfg/gyn

**Kinderwunsch- und Endometriosezentrum am Büsing Park**

Dr. med. Konstantin Manolopoulos, Daniela Chemogo, Dr. med. Meral Gündüz, Dr. med. Ismini Psyraiki  
Herrnstraße 51  
63065 Offenbach  
T: 069-80907571, F: 069-80907573  
info@offenbach-kinderwunsch.de  
www.offenbach-kinderwunsch.de

**Kinderwunschzentrum Darmstadt**

Dr. med. Aysen Bilgicyildirim, Dr. med. Matthias Inacker, Prof. Dr. med. Gerhard Leyendecker  
Bratustraße 9  
64293 Darmstadt  
T: 06151-50098-0, F: 06151-50098500  
info@ivf-da.de  
www.kinderwunschzentrum-da.de

**MVZ VivaNeo Kinderwunschzentrum Wiesbaden GmbH**

Dr. med. Martin Schorsch, Dr. med. Thomas Hahn, Dr. med. Geza Adasz, Karin Schilberz, Dr. med. Michael Amrani, Prof. Dr. med. Inka Wiegatz, Dr. med. Birgit Borzager, Dr. med. Eva Rau, Dr. med. Julia Limberg, Prof. Dr. med. Peyman Hadji, Dr. med. Dietrich Schrapper, Prof. Dr. med. Rudolf Seufert M. Sc.  
Mainzer Straße 98 - 102  
65189 Wiesbaden  
T: 0611-976320, F: 0611-9763210  
info@vivaneowiesbaden.de  
www.vivaneowiesbaden.de

**Kinderwunsch-Praxis IVF-Saar Saarbrücken-Kaiserslautern**

Dr. med. Lars Happel, Andreas Giebel, Dr. med. Sascha Tauchert, Michaela von Blohn, Dr. med. Anette Russu, Dr. med. Marika Otte  
Europaallee 15  
66113 Saarbrücken  
T: 0681-93632-0, F: 0681-93632-10  
zentrum@ivf-saar.de  
Maxstraße 13  
67659 Kaiserslautern  
T: 0631-70431, F: 0631-78568  
kaiserslautern@ivf-saar.de  
www.ivf-saar.de

**Klinik für Frauenheilkunde, Geburtshilfe und Reproduktionsmedizin**

Universitätskliniken des Saarlandes  
Dr. med. Simona Baus, Daniel Benndorf, Dr. med. Panagiotis Sklavounos  
Kirrbergstraße 1  
66421 Homburg  
T: 06841-1628213, F: 06841-1628061  
ivf@uks.eu  
www.uniklinikum-saarland.de/einrichtungen/kliniken\_institute/frauenklinik/

**Kinderwunschzentrum Ludwigshafen**

Dr. med. Tobias Schmidt, Dr. med. Claudia Schmidt, Nicole Hunenbart, Nirouz Mazkati  
Ludwigstraße 54 b  
67059 Ludwigshafen  
T: 0621-59298688, F: 0621-59298690  
kontakt@kinderwunsch-lu.de  
www.kinderwunsch-lu.de

**Kinderwunschzentrum der Universitätsmedizin Mannheim**

Prof. Dr. med. Marc Sütterlin, Dr. med. Regine Schaffelder, Dr. med. Amelie Trebin, Dr. med. Jade Kirscht  
Theodor-Kutzer-Ufer 1 - 3  
68167 Mannheim  
T: 0621-383-3638, F: 0621-383-3814  
ivflabor@umm.de  
www.umm.de/64.0.html

**Viernheimer Institut für Fertilität**

PD Dr. med. Stefanie Volz-Köster, Dr. med. Christina Nell, Dr. sc. hum. Brigitte Hauff  
Walter-Gropius-Allee 2  
68519 Viernheim  
T: 06204-918290, F: 06204-9182910  
info@vif-kinderwunsch.de  
www.vif-kinderwunsch.de

**Kinderwunschzentrum Heidelberg**

Dr. med. Waltraud Parta-Kehry, Friederike Tesarz, Dr. med. Daniela Seehaus, Dr. med. Christina Thöne  
Römerstraße 3  
69115 Heidelberg  
T: 06221-89300-0, F: 06221-89300-20  
info@kwz-hd.de  
www.kwz-hd.de

**Abt. für Gynäkologische Endokrinologie und Fertilitätsstörungen –**

Universitätsklinikum Heidelberg  
 Prof. Dr. med. Thomas Strowitzki, Prof. Dr. med. Ariane Germeyer, Dr. med. Sabine Rösner, Dr. med. Julia Rehnitz, Dr. med. Verena Holschbach, Dr. med. Ruben Kuon  
 Im Neuenheimer Feld 440  
 69120 Heidelberg  
 T: 06221-567910, F: 06221-564099  
 thomas.strowitzki@med.uni-heidelberg.de  
 www.klinikum.uni-heidelberg.de/  
 Kinderwunschambulanz.583.0.html

**Kinderwunsch-Zentrum Stuttgart**

Prof. Dr. med. Dieter H. A. Maas, Dr. med. Friedrich Gagsteiger, Dr. med. Klaus Bühler, Dr. med. Lisa Beiglböck, Dr. med. Gunilla Gröger, Dr. med. Christian Trautmann  
 Friedrichstraße 45  
 70174 Stuttgart  
 T: 0711-997806-0, F: 0711-997806-10  
 info@kwz-uml.de  
 www.kwz-stuttgart.de

**Kinderwunsch-Zentrum-Stuttgart, Praxis Villa Haag**

Dr. med. Dieter B. Mayer-Eichberger  
 Herdweg 69  
 70174 Stuttgart  
 T: 0711-221084, F: 0711-221085  
 info@kinderwunschpraxis.de  
 www.kinderwunschpraxis.de

**Kinderwunschzentrum Ludwigsburg**

Dr. med. Andreas Ott, Dr. med. Annette Schmid, Dr. med. Katja Becker, Dr. med. Katrin Hupfau, Petra Klotz, Simone Koch  
 Pflugfelder Straße 22  
 71636 Ludwigsburg  
 T: 07141-688760, F: 07141-688769  
 info@kiwu-lb.de  
 www.kinderwunschzentrum-ludwigsburg.com

**KinderwunschPraxis Dres. Göhring**

Dr. med. Ulrich Göhring, Dr. med. Inés Göhring  
 Haggerlocher Weg 63  
 72070 Tübingen  
 T: 07071-946663-0, F: 07071-94663-99  
 info@kinderwunschpraxis.com  
 www.kinderwunschpraxis.com

**IVF-Zentrum der Universitäts-Frauenklinik Tübingen**

Dr. med. Melanie Henes  
 Calwerstraße 7  
 72076 Tübingen  
 T: 07071-2983117, F: 07071-292250  
 melanie.henes@med.uni-tuebingen.de  
 www.uni-frauenklinik-tuebingen.de

**Kinderwunschzentrum Aalen**

Dr. med. Rainer Rau, Dr. med. Birgit Schröppel, Dr. rer. nat. Roland Eid  
 Weidenfelder Straße 1  
 73430 Aalen  
 T: 07361-62021, F: 07361-62026  
 info@kinderwunsch-aalen.de  
 www.kinderwunsch-aalen.de

**IVF-Zentrum Esslingen**

Praxis Dr. J. E. Costea  
 Dr. med. Johann Emil Costea, Dr. med. Alice Costea, Dr. med. Marius Albowitz  
 Martinstraße 15  
 73728 Esslingen  
 T: 0711-31059160, F: 0711-31059161  
 info@ivf-praxis.com  
 www.ivf-praxis.com

**Centrum für Kinderwunsch Pforzheim**

Verena Peuten  
 Zerrenner Straße 22 - 24  
 75172 Pforzheim  
 T: 07231-2808280, F: 07231-2808288  
 info@kinderwunsch-pforzheim.de  
 www.kinderwunsch-pforzheim.de

**Kinderwunschzentrum Karlsruhe**

Arbeitsgemeinschaft für Fortpflanzungsmedizin  
 Hans-Jürgen Gräber, Dr. med. Daniela Plathow, Dr. rer. nat. Frank Tetens  
 Waldstraße 2  
 76133 Karlsruhe  
 T: 0721- 8246700, F: 0721-82467090  
 info@ivf-programm.de  
 www.kinderwunschzentrum-karlsruhe.de

**Klinikum Mittelbaden**

Zentrum für Minimal Invasive Gynäkologie, Endometriose und Reproduktionsmedizin  
 Prof. Dr. med. Wolfgang Küpker, Dr. med. Peter Hartmann, Dr. med. Markus Knoll  
 Robert-Koch-Straße 70  
 77815 Bühl  
 T: 07223-815450, F: 07223-815452  
 info@kinderwunschzentrum-mittelbaden.de  
 www.kinderwunschzentrum-mittelbaden.de

**Kinderwunsch Bodensee**

Dr. med. Andreas Heine, Dr. med. Lena Otto  
 Maggistraße 5  
 78224 Singen  
 T: 07731-912999-0, F: 07731-912999-99  
 info@endlichnachwuchs.de  
 www.endlichnachwuchs.de

**Centrum für gynäkologische Endokrinologie und Reproduktionsmedizin Freiburg (CERF)**

Dr. med. Maria Thiemann, PD Dr. med. Birgit Wetzka, Dr. med. Veronika Wolk, Dr. med. Aida Hanjalic-Beck, Dr. med. Stefanie Friebe  
 Bismarckallee 7 f  
 79098 Freiburg  
 T: 0761-20743-0, F: 0761-32111  
 info@cerf-freiburg.de  
 www.cerf-freiburg.de

**Universitätsklinikum Freiburg, Klinik für Frauenheilkunde**

Abteilung für Endokrinologie und Reproduktionsmedizin  
 Dr. med. Philipp Wiehle  
 Hugstetter Straße 55  
 79106 Freiburg  
 T: 0761-270-31500, F: 0761-270-29120  
 philipp.wiehle@uniklinik-freiburg.de  
 www.uniklinik-freiburg.de/frauenheilkunde/  
 endokrinologie-und-reproduktionsmedizin.html

**Reproduktionsmedizin München MVZ**

Partnerschaftsgesellschaft  
 Dr. med. Walter Bollmann, Dr. med. Thomas Brückner, Dr. med. Ulrich Noss, Dr. med. Daniel Noss  
 Tal 11  
 80331 München  
 T: 089-242295-0, F: 089-242295-60  
 info@ivf-bbn.de  
 www.ivf-bbn.de

**kiz kinderwunsch im zentrum**

Praxis für gynäkologische Endokrinologie und Reproduktionsmedizin  
 PD Dr. med. Roxana Popovici, Dr. med. Anja Kuhlmann  
 Bayerstraße 3  
 80335 München  
 T: 089-4522178-0, F: 089-4522178-45  
 info@kiiz.de  
 www.kiiz.de

**Kinderwunsch Zentrum an der Oper**

Dr. med. Helmut Lacher, Dr. med. Jörg Puchta, PD Dr. med. Hans-Ulrich Pauer, Dr. med. Silke Michna  
 Maximilianstraße 2 a  
 80539 München  
 T: 089-547041-0, F: 089-547041-34  
 info@kinderwunschzentrum-an-der-oper.de  
 www.kinderwunschzentrum-an-der-oper.de

**Kinderwunsch Centrum München (MVZ)**

Dr. med. Klaus Fiedler, Dr. med. Gottfried Krüsmann, Prof. Dr. Dr. med. habil. Wolfgang Würfel, Dr. med. Irene von Hertwig, Dr. med. Jan Krüsmann, Ina Laubert, Osama Meri, Dr. med. Claudia Santjohanser, Sabine Völker, Dr. med. Veronika Pachmayr, Dr. med. Anja Albrecht  
 Lortzingstraße 26  
 81241 München  
 T: 089-244144-0, F: 089-244144-42  
 info@ivf-muenchen.de  
 www.ivf-muenchen.de

**Hormon- und Kinderwunschzentrum**

Klinikum der Ludwig-Maximilians-Universität München (Großhadern)  
 Prof. Dr. med. Christian J. Thaler, PD Dr. med. Nina Rogenhofer, Dr. med. Geraldine Müller-Stoy, Dr. med. Daniela Herzig, Dr. rer. nat. Viktoria von Schönfeldt, Dr. Panos Papadopoulos Ph.D, Dipl. hum. Biol. Larissa Sela-Hauter  
 Marchioninistraße 15  
 81377 München  
 T: 089-4400-76825, Sekr. -6821, F: 089-4400-73844  
 ivf@med.lmu.de  
 Standort Campus Innenstadt  
 Maistraße 11  
 80337 München  
 T: 089-4400-54214, F: 089-4400-54918  
 www.kinderwunsch-uni-muenchen.de

**GMP Frauenärzte Prof. Berg, Dr. Lesoine**

Reproduktionsmedizin in Bogenhausen  
Prof. Dr. med. Dieter Berg, Dr. med. Bernd Lesoine  
Prinzregentenstraße 69  
81675 München  
T: 089-414240-0, F: 089-414240-11  
info@ivf-muenchen.com  
www.ivf-muenchen.com

**Kinderwunsch Centrum Chiemsee**

Dr. med. Susann Böhm, Dr. med. Angelika Stachl  
Hochriesstraße 21  
83209 Prien am Chiemsee  
T: 08051-5050, F: 08051-63499  
info@kinderwunsch-chiemsee.de  
www.kinderwunsch-chiemsee.de

**Kinderwunschpraxis München Nord**

Dr. med. Judith Rattenhuber, Dr. med. Sabine Fillenberg  
Schleißheimer Straße 91  
85748 Garching b. München  
T: 089-4523545-0, F: 089-4523545-45  
info@kinderwunschpraxis-muenchen-nord.de  
www.kinderwunschpraxis-muenchen-nord.de

**Kinderwunschzentrum Augsburg**

**GMP**

Dr. med. Klaus-Friedrich Hiller, Dr. med. Thomas Bauer, Dr. med. Harald Kraus, PD Dr. med. Robert Ochsenkühn  
Prinzregentenstraße 25  
86150 Augsburg  
T: 0821-5027888, F: 0821-5027878  
info@ivf-augsburg.de  
www.ivf-augsburg.de

**KinderWunschKempten (KWK)**

Zentrum für Reproduktionsmedizin am Klinikum Kempten  
Prof. Dr. med. Ricardo Felberbaum, Dr. med. Anke Brössner, Dr. med. Katrina Kraft, Dipl.-Biol. Nadja Jaouad, Dipl.-Biol. Melanie Schreiner  
Robert-Weixler-Straße 50  
87439 Kempten  
T: 0831-530-3380, F: 0831-530-3378  
kinderwunsch@klinikum-kempten.de  
www.kinderwunsch-kempten.de

**Praxisklinik Frauenstraße Ulm**

MVZ für Kinderwunsch und Pränatalmedizin  
Prof. Dr. med. Karl Sterzik, Dr. med. Erwin Strehler, Prof. Dr. med. Wolfgang Hütter  
Frauenstraße 51  
89073 Ulm  
T: 0731-966510, F: 0731-9665130  
info@kinderwunsch-ulm.de  
www.kinderwunsch-ulm.de

**Universitätsfrauenklinik und Poliklinik Ulm**

Zentrum für Reproduktionsmedizin und Gynäkologische Endokrinologie  
Prof. Dr. med. Katharina Hancke  
Prittwitzstraße 43  
89075 Ulm  
T: 0731-50058663, F: 0731-50058664  
repromed.ufk@uniklinik-ulm.de  
www.uni-ulm.de/ivf

**Kinderwunsch-Zentrum Ulm**

Dr. med. Friedrich Gagsteiger, Dr. med. Natalie Reeka, Dr. med. Kerstin Eibner, Dr. med. Christian Trautmann, PD Dr. med. Dr. rer. nat. Karin Bundschu, Julia Koglin  
Einsteinstraße 59  
89077 Ulm  
T: 0731-151590, F: 0731-1515915  
info@kwz-ulm.de  
www.kwz-ulm.de

**Kinderwunsch und Frauen-Hormon Centrum Nürnberg**

Dr. med. Joachim Neuwinger, Dr. med. Barbara Munzer-Neuwinger, Prof. Dr. med. Peter Licht  
Agnesgasse 2 - 4  
90403 Nürnberg  
T: 0911-2355500, F: 0911-2355516  
aerzte@kinderwunschzentrum-nuernberg.de  
www.kinderwunschzentrum-nuernberg.de

**GMP Dres. Hamori, Behrens, Hammel**

Dr. med. Miklos Hamori, Dr. med. Rolf Behrens, Dr. med. Andreas Hammel  
Nürnberger Straße 35  
91052 Erlangen  
T: 09131-89520, F: 09131-205410  
info@ivf-erlangen.de  
www.ivf-erlangen.de

**Kinderwunschzentrum Erlangen**

Dr. med. Jan van Uem, Dr. med. Madeleine Haas  
Michael-Vogel-Straße 1 e  
91052 Erlangen  
T: 09131-8095-0, F: 09131-8095-30  
info@kinderwunschzentrum-erlangen.de  
www.kinderwunschzentrum-erlangen.de

**Universitäts-Fortpflanzungszentrum Franken (UFF)**

Prof. Dr. med. Matthias W. Beckmann, Prof. Dr. med. Susanne Cupisti, Dr. med. Thomas Hildebrandt, Prof. Dr. med. Stefan P. Renner, MBA, Prof. Dr. rer. nat. Ralf Dittrich  
Universitätsstraße 21 - 23  
91054 Erlangen  
T: 09131-85-33553, F: 09131-85-33456  
fk-uff@uk-erlangen.de  
www.reproduktionsmedizin.uk-erlangen.de

**Kinderwunschzentrum Amberg**

Am Klinikum St. Marien Amberg  
Dr. med. Jürgen Krieg  
Mariahilfbergweg 7  
92224 Amberg  
T: 09621-381519, F: 09621-381941  
info@dr-krieg.de  
www.kinderwunsch-amberg.de

**KITZ Regensburg - KinderwunschTherapie im Zentrum**

Prof. Dr. med. Bernd Seifert, Dr. med. Claudia Gaßner  
Hemauerstraße 1  
93047 Regensburg  
T: 0941-992577-0, F: 0941-992577-23  
info@kitz-regensburg.de  
www.kitz-regensburg.de

**Kinderwunschzentrum profertilita, Zentrum für Fruchtbarkeitsmedizin und Frauengesundheit**

Prof. Dr. med. Monika Bals-Pratsch, M. Sc., Dr. med. Angelika Eder, M. Sc., Dr. med. Christine Reißmann, Dr. med. Kathrin Kittel  
Hildegard-von-Bingen-Straße 1  
93053 Regensburg  
T: 0941-89849944, F: 0941-89849945  
praxis@profertilita.de  
www.profertilita.de

**Kinderwunschzentrum Niederbayern**

Dr. med. Hans-Joachim Kroiss, Dr. med. Samuel Dadze, Dr. IM Tem. Elfriede Bernhardt  
Stadtfeldstraße 50  
94469 Deggendorf  
T: 0991-29799332, F: 0991-29799331  
praxis@ivf-bayern.de, dr.kroiss@ivf-bayern.de  
www.kinderwunsch-niederbayern.de

**Zentrum für Reproduktionsmedizin, Medizinische Genetik und Pränataldiagnostik**

Dr. med. Reinhard Mai, Dr. med. Wolfgang Schmitt, Dr. med. Lore Mulfingner  
Juliuspromenade 7  
97070 Würzburg  
T: 0931-321230, F: 0931-3212377  
kontakt@drs-mai-schmitt-mulfingner.de  
www.drs-mai-schmitt-mulfingner.de

**Universitätsklinikum Würzburg**

Frauenklinik und Poliklinik  
Zentrum für gynäkologische Endokrinologie und Reproduktionsmedizin  
Dr. med. Michael Schwab  
Josef-Schneider-Straße 4  
97080 Würzburg  
T: 0931-201-25619, F: 0931-201-25406  
kinderwunsch@ukw.de  
www.frauenklinik.uni-wuerzburg.de

*If calling from outside Germany, dial +49 and omit 0 in the area code.*

Without generous support, publishing this Annual would not have been possible.

Our gratitude goes to:

FERRING Arzneimittel GmbH, Kiel  
<http://www.ferring.de>

4.500 Euro



---

Finox Biotech, Kircherg/Schweiz  
<http://finoxbiotech.com>

4.500 Euro



---

Merck Serono GmbH, Darmstadt  
<http://www.merckserono.de>

4.500 Euro



---

MSD Sharp & Dohme GmbH, Haar bei München  
<http://www.msd.de>

4.500 Euro



---

TEVA GmbH, Berlin  
<http://www.teva.de>

4.500 Euro



# Mitteilungen aus der Redaktion

Besuchen Sie unsere Rubrik

## [Medizintechnik-Produkte](#)



Neues CRTD Implantat  
Intica 7 HF-T QP von Biotronik



Artis pheno  
Siemens Healthcare Diagnostics GmbH



Philips Azurion:  
Innovative Bildgebungslösung

Aspirator 3  
Labotect GmbH



InControl 1050  
Labotect GmbH

## e-Journal-Abo

Beziehen Sie die elektronischen Ausgaben dieser Zeitschrift hier.

Die Lieferung umfasst 4–5 Ausgaben pro Jahr zzgl. allfälliger Sonderhefte.

Unsere e-Journale stehen als PDF-Datei zur Verfügung und sind auf den meisten der marktüblichen e-Book-Readern, Tablets sowie auf iPad funktionsfähig.

## [Bestellung e-Journal-Abo](#)

### Haftungsausschluss

Die in unseren Webseiten publizierten Informationen richten sich **ausschließlich an geprüfte und autorisierte medizinische Berufsgruppen** und entbinden nicht von der ärztlichen Sorgfaltspflicht sowie von einer ausführlichen Patientenaufklärung über therapeutische Optionen und deren Wirkungen bzw. Nebenwirkungen. Die entsprechenden Angaben werden von den Autoren mit der größten Sorgfalt recherchiert und zusammengestellt. Die angegebenen Dosierungen sind im Einzelfall anhand der Fachinformationen zu überprüfen. Weder die Autoren, noch die tragenden Gesellschaften noch der Verlag übernehmen irgendwelche Haftungsansprüche.

Bitte beachten Sie auch diese Seiten:

[Impressum](#)

[Disclaimers & Copyright](#)

[Datenschutzerklärung](#)